



UHD eIntelligence Version 4.2

User Manual

Teaching Technology & Learning Center



University of Houston-Downtown

THE BASICS

WHAT IS eINTELLIGENCE?

eIntelligence is UHD's *Business Intelligence* software. This software allows UHD decision-makers to easily access data (student, applicant, course, etc.) and summarize it in meaningful ways to make informed university decisions.

Note: Data in eIntelligence is refreshed on a regular basis. Historic data may change slightly due to changes and corrections made to the source data (e.g. Banner).

Information derived from this system should be used for internal decision-making only. For official statistics or information for public use, please contact the Office of Institutional Research.

LOG IN TO eINTELLIGENCE

Log in to eIntelligence

1. Open an Internet Explorer browser window.

Please note: eIntelligence will work in Firefox, but not Chrome

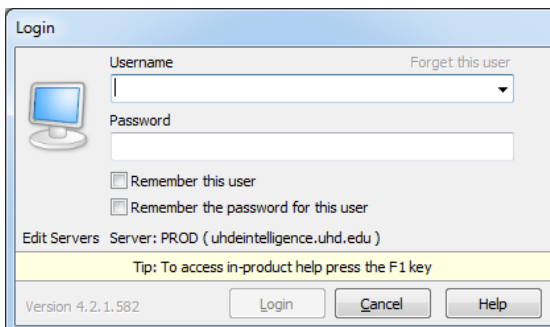
2. The following URL will access login Page: _

<https://eintelligence.uhd.edu/Argos/>

3. Click **Log into eIntelligence**.
4. If you do not get an automatic pop-up window prompting you to login, you may also use the Login button located at the top left of the eIntelligence window.

5. The first time you use eIntelligence, you need to download and install a program. **You must be administrator of your computer in order to install programs.**

6. The eIntelligence login dialog box will appear. If your browser is not configured properly, you will be shown instructions to download the tools needed to run eIntelligence.



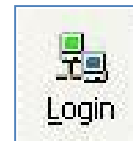
7. Enter your UHD username and password. Within the login dialog box, there are several options you may configure to meet your needs.

EINTELLIGENCE

- [eIntelligence User Manual](#) [PDF]
- [Log into eIntelligence](#)

eIntelligence is UHD's business intelligence system, created with Argos software. This software allows UHD decision-makers to easily access data (student, applicant, course, etc) and summarize it in meaningful ways to make informed university decisions.

Information derived from this system should be used for internal decision-making only. For official statistics or information for public use, please contact the [Office of Institutional Research](#).

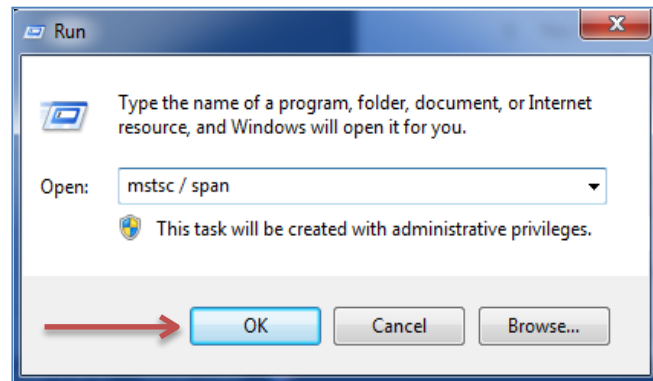


Note for Users with Double Monitors:

When logging in to eIntelligence via Remote Desktop, you may find that EI is displayed on your second screen and the login screen is not visible during your remote session.

When running eIntelligence during a Remote Desktop session, click the **Windows** button and then **Run**. Enter the command **mstsc / span** (please note the space between 'c' and '/') and then click **OK**.

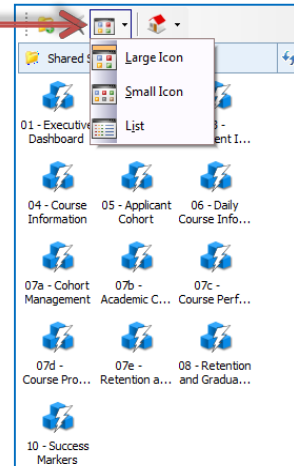
This command causes remote desktop to bring up both screens so the log-in screen is visible.



THE eINTELLIGENCE STRUCTURE

The eIntelligence Windows

1. Select your view of the eIntelligence dashboard by clicking on the down arrow listed to the right.
2. You will see several data blocks depending on your permissions. Some of these include:
 1. Executive Dashboard
 2. Applicant Information
 3. Enrollment Information
 4. Course Information
 5. Applicant Cohort
 6. Daily Course Information



3. Double-click the data block you wish to access.

For example, to compare data at the applicant level, double-click **Applicant Information**.

4. The data block will execute and you may now analyze/compare its data.

WHAT ARE DATA BLOCKS?

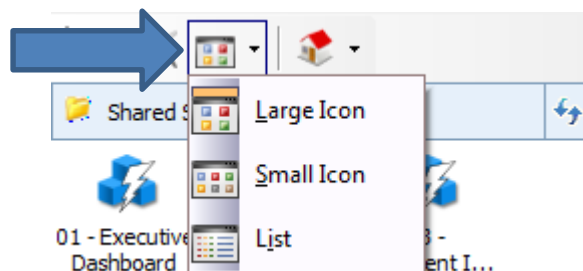
DEFINITION: A data block is a multidimensional table that allows users to find what is important and relevant to a particular question or need. Data blocks allow for the exploration of alternate scenarios to present valuable information more effectively and quickly for the user.

The following table explains the current data blocks:

| Data Block | Data That Can Be Found | Example Query |
|---------------------------------|---|---|
| Executive Dashboard | High level summary information of student registration, with historic data by day | How many students have registered for Fall 2010 compared to Fall 2009 enrollment at the same point in time? |
| Applicant Information | UHD applicant information | How many undergraduates applied to UHD as transfers for Spring 2008? |
| Enrollment Information | Information about specific enrolled students or general UHD enrollment. | How many female students at UHD are biology majors? |
| Course Information | Information about specific courses or general UHD courses. | What proportion of students take day classes vs. night classes? |
| Applicant Cohort | Total stats on applicants and students for the semester | How many students have paid for Fall 2009 compared to how many had paid at the same point in time for Fall 2008? |
| Daily Course Information | Track detailed enrollment numbers against previous semesters or at | Is the online enrollment 25 days before the first day of Summer I 2011 higher or lower than the same point in time for Summer I 2010? |

SELECTING HOW TO VIEW MODULES

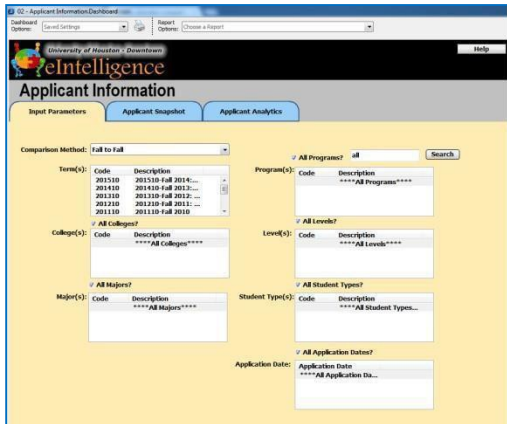
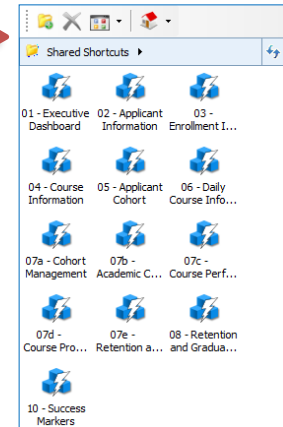
After logging on, click on the “View Modes” icon and select Large Icon, Small Icon, or List View.



After making this selection, eIntelligence will remember your preference for future logins.

NAVIGATING THE DATA BLOCKS

1. Look under the shared shortcuts.
2. Click only once the data block you wish to working.
3. Just double click on the data block you wish you work on.



Depending on the data block selected, a different layout will appear in a pop-up window, which represents that data block.

4. To exit a data block, click the X in the top right portion of the window.

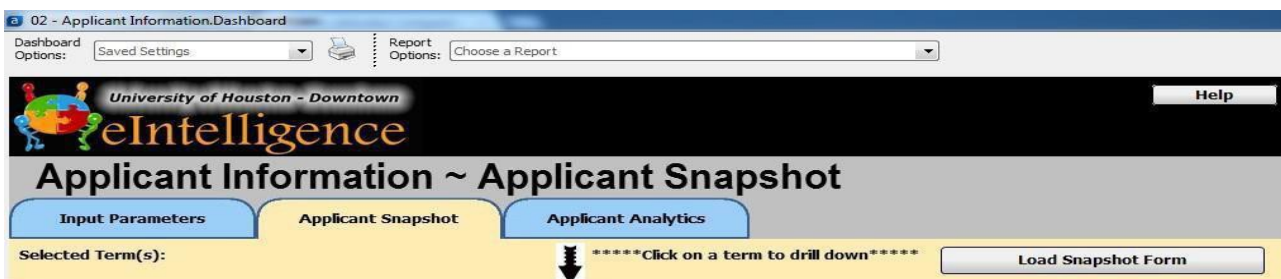
Drill Down

DEFINITION: To “drill down” in eIntelligence is to look at a specific piece of data in detail. Some charts do not have the ability to be drilled down; the ones that may be drilled down are indicated by a drill down icon.



Practice drilling down:

1. Enter the **Applicant Information** data block (eIntelligence → Applicant Information).
2. Specify your desired data in the **Input Parameters** tab.
3. Click the **Applicant Snapshot** tab.
4. Click the **Load Snapshot Form** button.



5. A bar graph of the requested data appears. To **drill down**, click the bar you wish to view.
6. You may further drill down into the information by clicking the bar you wish to view.
7. You may go back to a previous screen by clicking the **Back** button at the top right.

EXECUTIVE DASHBOARD

EXECUTIVE DASHBOARD

The Executive Dashboard is a snapshot of certain data that is always available just one click away.

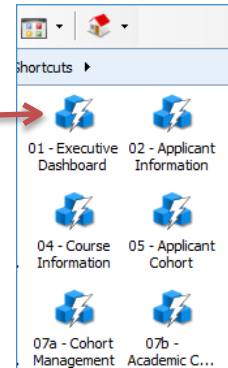
Note: Data in eIntelligence is refreshed on a regular basis. Historic data may change slightly due to changes and corrections made to the source data (e.g. Banner).

Note: In the Executive Dashboard and Daily Course the current day's data will represent the data as of the current day's morning snapshot. Previous days' data will represent the end of that day's snapshot.

Note: You cannot currently download the data from the Executive Dashboard data block.

Operate Executive Dashboard

1. Double-click the **Executive Dashboard** data block.
2. The Daily Statistics tab looks at where we are now for the current semester compared to the same point in time or to a date of your choice of the equivalent semester in prior years.
3. When you first start the **Daily Statistics** data make your selection for term1. The system will automatically select the current date for term 1. Terms 2 and 3 will differ by one year. Select the dates for comparison and click the **"Load"** button.



01 - Executive Dashboard.Dashboard

Dashboard Options: Saved Settings Report Options: Choose a Report

University of Houston - Downtown
eIntelligence

Executive Dashboard

Help

Daily Statistics | Statistics | Daily Summary Charts | Daily Detail

Select Term Type: **Fall**

Select Term 1: **201410 - Fall 2013:8/26-12/20**

Select Term 1 Date: **24-OCT-2013** Select Term 2 Date: **25-OCT-2012** Select Term 3 Date: **20-OCT-2011** **Load**

Index : 59 Index : 59 Index : 59

Total Stats (Undergrad/Grad) ELI applications are excluded starting Spring 2013

| TERM | DATE | Timestamp | APPS | ADMIT | REG | REG SCH | PAID | PAID SCH | FA AWRD | FA PSTD |
|---------------------|-------------|-----------|--------|-------|--------|---------|--------|----------|---------|---------|
| Fall 2013:8/26-... | 24-OCT-2013 | 15:00:17 | 12,747 | 8,925 | 13,757 | 137,914 | 13,756 | 137,908 | 8,703 | 8,517 |
| Fall 2012: 8/27-... | 25-OCT-2012 | 06:00:19 | 14,222 | 9,557 | 13,916 | 138,558 | 13,916 | | 8,761 | 8,578 |
| Fall 2011: 8/22-... | 20-OCT-2011 | 07:00:53 | 12,497 | 7,985 | 12,922 | 129,630 | 12,919 | | 8,379 | 8,164 |

Undergraduate Stats

| TERM | DATE | Timestamp | APPS | ADMIT | REG | REG SCH | PAID | PAID SCH | FTIC | TRANS | CONT | Registered | READMIT | OT |
|---------------------|-------------|-----------|--------|-------|--------|---------|--------|----------|-------|-------|-------|------------|---------|----|
| Fall 2013:8/26-... | 24-OCT-2013 | 15:00:17 | 12,395 | 8,798 | 13,486 | 136,512 | 13,485 | 136,506 | 1,106 | 2,322 | 8,506 | 1,188 | | |
| Fall 2012: 8/27-... | 25-OCT-2012 | 06:00:19 | 13,879 | 9,457 | 13,711 | 137,516 | 13,711 | | 1,416 | 2,346 | | | | 9 |
| Fall 2011: 8/22-... | 20-OCT-2011 | 07:00:53 | 12,285 | 7,909 | 12,762 | 128,609 | 12,759 | | 1,095 | 2,007 | | | | 9 |

Graduate Stats

| TERM | DATE | Timestamp | APPS | ADMIT | REG | REG SCH | PAID | PAID SCH | NEW GRAD | TRANS | CONT | Registered | READMIT | FOR |
|---------------------|-------------|-----------|------|-------|-----|---------|------|----------|----------|-------|------|------------|---------|-----|
| Fall 2013:8/26-... | 24-OCT-2013 | 15:00:17 | 352 | 127 | 271 | 1,402 | 271 | 1,402 | 94 | 0 | 162 | | | |
| Fall 2012: 8/27-... | 25-OCT-2012 | 06:00:19 | 343 | 100 | 205 | 1,042 | 205 | | 85 | 0 | | | 11 | |
| Fall 2011: 8/22-... | 20-OCT-2011 | 07:00:53 | 212 | 76 | 160 | 1,021 | 160 | | 50 | 0 | | | | |

Note: REG SCH – Registered Semester Credit Hours. New field will not show data prior to November 2011.

1. In the Statistics tab, in the “Enter Number of Terms” field, input the number of terms you wish to compare. **Note:** Maximum number of terms will change based on the term type you select.

Executive Dashboard

Daily Statistics | **Statistics** | Daily Summary Charts | Daily Detail

Enter Number of Terms: 2 Max of 16 - 2 is the Default Load

Select Term Type: Fall

Total Stats (Undergrad/Grad)

| TERM | APPS | ADMIT | REG | REG SCH | PAID | FA AWRD | FA PSTD |
|---------------|--------|-------|--------|---------|--------|---------|---------|
| Fall 2014:... | 939 | 91 | 0 | 0 | 0 | 0 | 0 |
| Fall 2013:... | 12,747 | 8,925 | 13,757 | 137,914 | 13,756 | 8,702 | 8,561 |
| Fall 2012:... | 14,218 | 9,558 | 13,921 | 138,989 | 13,921 | 9,082 | 8,964 |

Undergraduate Stats

| TERM | APPS | ADMIT | REG | REG SCH | PAID | FTIC | TRANS | OTHER | FA AWRD | FA PSTD |
|---------------|--------|-------|--------|---------|--------|-------|-------|-------|---------|---------|
| Fall 2014:... | 924 | 90 | 0 | 0 | 0 | 0 | 0 | 0 | 0 | 0 |
| Fall 2013:... | 12,395 | 8,798 | 13,486 | 136,512 | 13,485 | 1,106 | 2,322 | 320 | 8,579 | 8,439 |
| Fall 2012:... | 13,875 | 9,456 | 13,714 | 137,665 | 13,714 | 1,416 | 2,347 | 9,951 | 8,979 | 8,862 |

Graduate Stats

| TERM | APPS | ADMIT | REG | REG SCH | PAID | NEW GRAD | TRANS | FORMER | FA AWRD | FA PSTD |
|---------------|------|-------|-----|---------|------|----------|-------|--------|---------|---------|
| Fall 2014:... | 15 | 1 | 0 | 0 | 0 | 0 | 0 | 0 | 0 | 0 |
| Fall 2013:... | 352 | 127 | 271 | 1,402 | 271 | 94 | 0 | 4 | 123 | 122 |
| Fall 2012:... | 343 | 102 | 207 | 1,324 | 207 | 87 | 0 | 120 | 103 | 102 |

2. From the “Select Term Type” drop-down menu, select which specific terms to compare.
3. Click the “Load” button and the data will populate in the following three areas:
 - a. Total Stats(Undergrad/Grad)
 - b. Undergraduate Stats
 - c. Graduate Stats
4. If you wish to view charts of this data as a daily summary, click the **Daily Summary Charts** tab. For more detailed information, click the **Daily Detail** tab.

Executive Dashboard

Daily Statistics | **Statistics** | Daily Summary Charts | Daily Detail

Enter Number of Terms: 2 Max of 16 - 2 is the Default Load

Select Term Type: Fall

Total Stats (Undergrad/Grad)

| TERM | APPS | ADMIT | REG | REG SCH | PAID | FA AWRD | FA PSTD |
|---------------|--------|-------|--------|---------|--------|---------|---------|
| Fall 2014:... | 939 | 91 | 0 | 0 | 0 | 0 | 0 |
| Fall 2013:... | 12,747 | 8,925 | 13,757 | 137,914 | 13,756 | 8,702 | 8,561 |
| Fall 2012:... | 14,218 | 9,558 | 13,921 | 138,989 | 13,921 | 9,082 | 8,964 |

Undergraduate Stats

| TERM | APPS | ADMIT | REG | REG SCH | PAID | FTIC | TRANS | OTHER | FA AWRD | FA PSTD |
|---------------|--------|-------|--------|---------|--------|-------|-------|-------|---------|---------|
| Fall 2014:... | 924 | 90 | 0 | 0 | 0 | 0 | 0 | 0 | 0 | 0 |
| Fall 2013:... | 12,395 | 8,798 | 13,486 | 136,512 | 13,485 | 1,106 | 2,322 | 320 | 8,579 | 8,439 |
| Fall 2012:... | 13,875 | 9,456 | 13,714 | 137,665 | 13,714 | 1,416 | 2,347 | 9,951 | 8,979 | 8,862 |

Graduate Stats

| TERM | APPS | ADMIT | REG | REG SCH | PAID | NEW GRAD | TRANS | FORMER | FA AWRD | FA PSTD |
|---------------|------|-------|-----|---------|------|----------|-------|--------|---------|---------|
| Fall 2014:... | 15 | 1 | 0 | 0 | 0 | 0 | 0 | 0 | 0 | 0 |
| Fall 2013:... | 352 | 127 | 271 | 1,402 | 271 | 94 | 0 | 4 | 123 | 122 |
| Fall 2012:... | 343 | 102 | 207 | 1,324 | 207 | 87 | 0 | 120 | 103 | 102 |

- 5.
6. The **Statistics** tab looks at where we are now for current semester compared against census day of the equivalent semester in prior years.

SNAPSHOTS

ADMISSIONS, ENROLLMENT AND COURSE SNAPSHOTS

APPLICANT SNAPSHOT

The process to create graphical snapshots of data is slightly different between the two data blocks. The **Applicant Information** data block is shown below:

02 - Applicant Information.Dashboard

Dashboard Options: Saved Settings Report Options: Choose a Report

University of Houston - Downtown
eIntelligence

Applicant Information

Input Parameters Applicant Snapshot Applicant Analytics

Comparison Method: Fall to Fall

Term(s):

| Code | Description |
|--------|-----------------------|
| 201510 | 201510-Fall 2014:... |
| 201410 | 201410-Fall 2013:... |
| 201310 | 201310-Fall 2012: ... |
| 201210 | 201210-Fall 2011: ... |
| 201110 | 201110-Fall 2010 |

College(s):

| Code | Description |
|----------------------|-------------|
| ****All Colleges**** | |

Major(s):

| Code | Description |
|--------------------|-------------|
| ****All Majors**** | |

Program(s):

| Code | Description |
|----------------------|-------------|
| ****All Programs**** | |

Level(s):

| Code | Description |
|--------------------|-------------|
| ****All Levels**** | |

Student Type(s):

| Code | Description |
|------------------------------|-------------|
| ****All Student Types...**** | |

Application Date:

| Application Date |
|-------------------------------|
| ****All Application Da...**** |

Search

Create Snapshot Form in the Applicant Information Data Block

1. First, decide the “**Comparison Method**” you would like to employ. The choices offered are:
 - **Fall to Fall** – Shows only Fall terms
 - **Spring to Spring** – Shows only Spring terms
 - **Spring to Fall** – Shows only Fall and Spring terms
 - **Term order** – Shows all types of terms (Fall, Spring, Summer and Winter)

2. Select the term(s) you wish to see.

To select more than one term, hold down the CTRL button on your keyboard and click each one separately.

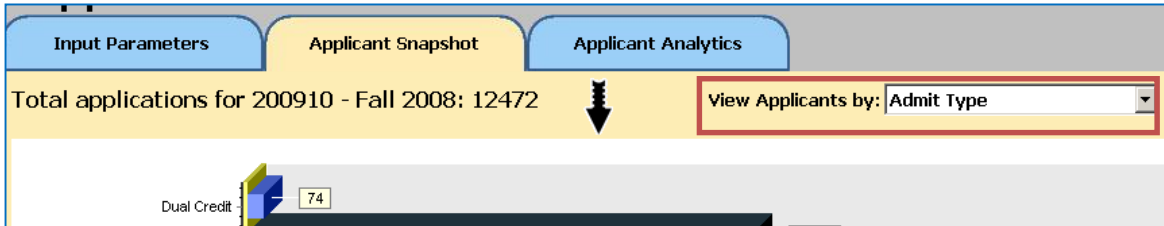
3. In the following boxes, identify which specific data you would like to view. The choices offered are:
 - College(s)
 - Major(s)
 - Program(s)
 - Level(s) – Undergraduate, Graduate
 - Student Type(s) – Undeclared, New Freshman, Transfer, Continuing, etc.
 - Application Date – limit the applications to only those received by a certain date

Please note: There is a checkbox above each section that allows you to choose all.

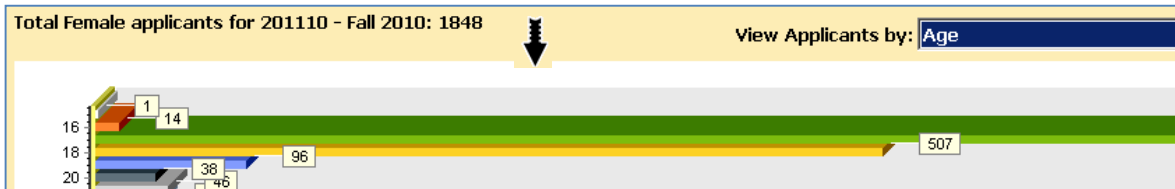
4. When you have chosen all the **Input Parameters**, click the **Applicant Snapshot** tab.

Enter the Applicant Snapshot Tab

1. To view the snapshot of the parameters you chose, you must click the Load Snapshot Form button:
2. A general summary of all information appears. To view specifics, click the graphic element.
3. Specific ways to view the data are listed in the “View Applicants by” drop-down menu at the top of the screen. You only have to click a category (**Gender, Ethnicity, etc.**) to view the bar graph of its data.



4. You may also drill down within this chart by clicking on one of the bars.



ENROLLMENT AND COURSE SNAPSHOT

The **Enrollment Information** data block looks like this:

03 - Enrollment Information.Dashboard

Dashboard Options: Saved Settings Report Options: Choose a Report

University of Houston - Downtown
eIntelligence

Enrollment Information

Input Parameters Enrollment Snapshot Multi-term Enrollment Snapshot Enrollment Analytics

Record Set: Official
Comparison Method: Fall to Fall

Term(s):
Description
201510-Fall 2014:8/25-12...
201410-Fall 2013:8/26-12...
201310-Fall 2012: 8/27-12...
201210-Fall 2011: 8/22-12...
201110-Fall 2010

College: All Colleges?
Code Description
****All Colleges****

Department(s): All Departments?
Code Description
****All Departments*...

Level(s): All Levels?
Code Description
****All Levels****

Student Type(s): All Student Types?
Code Description
*** All Student Types ***

Major(s): All Majors?
Code Description
****All Majors****

Program(s): All Programs? all Search
Code Description
****All Programs****

Create Snapshot Form in the Enrollment Data Block

1. Open the **Enrollment Data Block** and choose which **Record Set** you wish to use in analyzing enrollment data.
 - **Official:** data as of the reporting day for the university (20th day).
 - **Current:** data as of the end of the semester for prior semesters. When a semester is in progress, it is data as of the prior day (the system is refreshed each night).
2. Next, decide which “**Comparison Method**” to employ. The choices offered are:
 - **Fall to Fall – Shows only Fall terms**
 - **Spring to Spring – Shows only Spring terms**
 - **Spring to Fall – Shows only Fall and Spring terms**
 - **Term order – Shows all types of terms (Fall, Spring, Summer and Winter)**
3. Select the terms you wish to see.

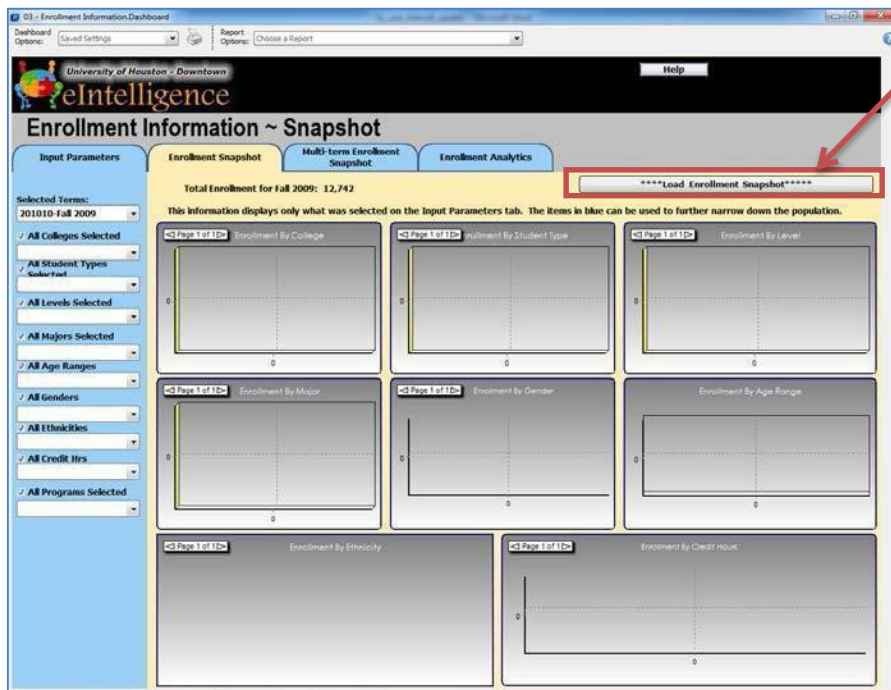
To select more than one term, hold down the CTRL button on your keyboard and click each one separately.

- In the following sections, identify which specific data you would like to view. The choices offered are:
 - College
 - Department(s)
 - Level(s) – Undergraduate, Graduate
 - Student Type(s) – Undeclared, New Freshman, Transfer, etc.
 - Major(s)
 - Program(s)

To select more than one term, hold down the CTRL button on your keyboard and click each one separately. There is a checkbox above each section that allows you to choose all.

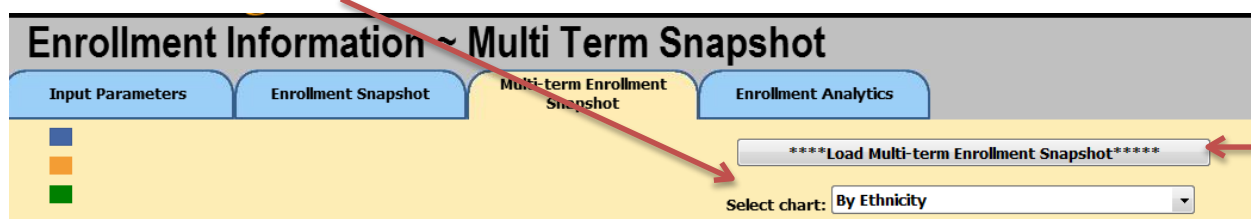
Enter the Enrollment Snapshot Tab

- Click the **Enrollment Snapshot** tab.



- Now click the **Load Enrollment Snapshot** button at the top right. The graphs will populate.
- These graphs depict the data you requested, such as an Enrollment by Student Type bar graph, a Enrollment by Ethnicity pie chart, and more. You may filter data using the drop-downs in the blue left menu.
- Now click the **Multi-Term Enrollment Snapshot** tab.

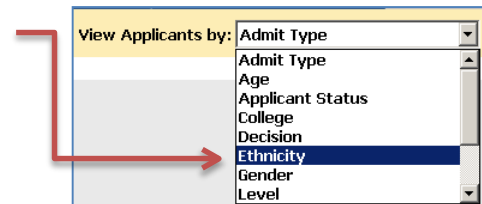
- Click the **Load Multi-Term Enrollment Snapshot** button. The graph area will populate with data. You may use the **Select Chart:** drop-down to filter by **ethnicity, gender and student type**.



EXAMPLES OF SNAPSHOT QUERIES

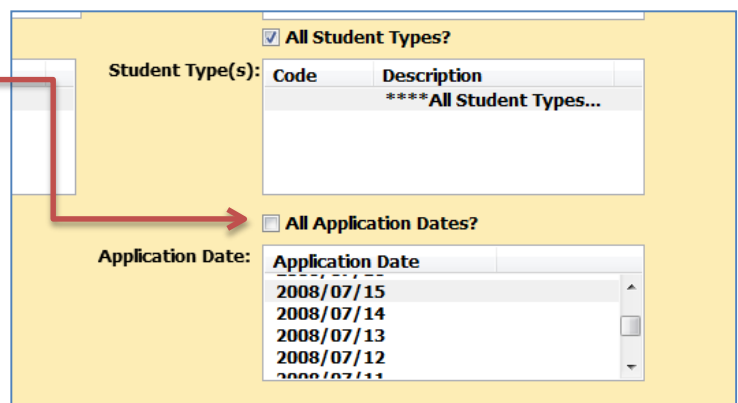
What is the breakdown of applicants by ethnicity?

1. Log into eIntelligence and expand the **eIntelligence** folder from the explorer tree on the left side of the screen.
2. Since we wish to look at applicants, click the **Applicant Information** data block.
3. Click the **Quick View** button.
4. Choose the **Comparison Method and term(s)**.
5. To answer this question, we will not need to change any of the other fields.
6. Click the **Applicant Snapshot** tab.
7. In the **Applicant Snapshot** tab, click the **Load Snapshot Form** button. The graphical data will appear.
8. Drill down to view the details of the applicants listed.
9. Click the “**View Applicants by**” drop-down at the top right of the screen, and choose **Ethnicity**.
10. The bar graph details the breakdown of applicants by Ethnicity.
11. To drill down and view details on a certain ethnicity, click the **graphical element** you wish to view, and select another detail from the “**View Applicants by**” drop-down.



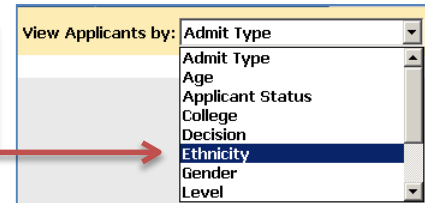
What is the breakdown of applicants (who applied by the posted application deadline for UHD) by ethnicity?

1. Log into eIntelligence and expand the **eIntelligence** folder from the explorer tree on the left side of the screen.
2. Since we wish to look at applicants, click the **Applicant Information** data block.
3. Click the **Quick View** button.
4. Choose the **Comparison Method and term(s)**.
5. In the **Application Date** field, uncheck the **All Application Dates** checkbox.
6. Select the application deadline date for the term or terms you are comparing.
7. We will not need to change any of the other fields.



8. Click the **Applicant Snapshot** tab.
9. In the Applicant Snapshot tab, click the **Load Snapshot Form** button. The graphical data will appear.
10. **Drill down** to view the details of the applicants listed.
11. Click the **“View Applicants by”** drop-down at the top right of the screen, and choose **Ethnicity**.

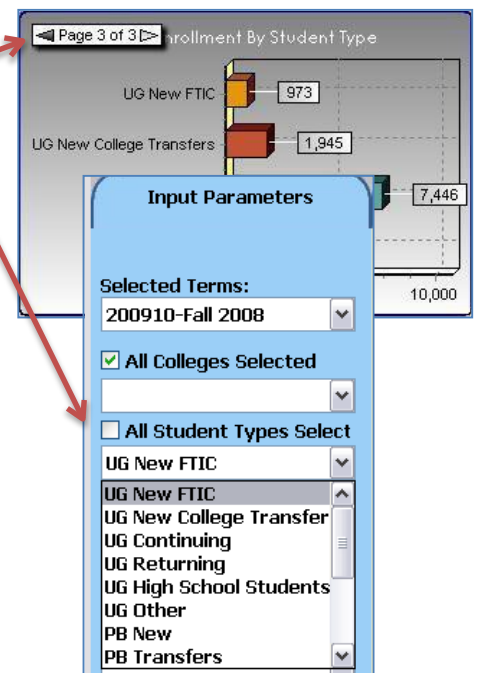
12. The bar graph details the breakdown of applicants by Ethnicity.
13. To drill down and view details on a certain ethnicity, **click the graphical element** you wish to view, and select another detail from the **“View Applicants by”** drop-down.



What is the distribution by ethnicity and gender of our new students?

1. Log into eIntelligence and expand the **eIntelligence** folder from the explorer tree on the left side of the screen.
2. Since we wish to look at enrollment data, click the **Enrollment Information** data block.
3. Click the **Quick View** button.
4. Choose the **Comparison Method** and **term(s)** you wish to view.
5. For this question, we will not need to change any of the other fields. Click the **Enrollment Snapshot** tab and then the **Load Snapshot Form** button.

6. Click on the paging arrows to view student type **“UG NEW FTIC.”**
7. To see the distributions of other groups of students, click the **“All Student Types Select”** drop-down and choose between:
 - UG New College Transfers
 - UG Continuing
 - UG Returning
 - UG High School Students
 - UG Other
 - New Masters
 - Masters Continuing
 - Masters Returning



SNAPSHOT PRACTICE QUESTIONS

Applicant Snapshot Questions:

1. In the Fall of 2007, how many College of Public Service Females applied?
2. In the Spring of 2009, how many White – Non – Hispanic students were accepted on probation?

Enrollment Snapshot Questions:

1. Compare Spring 2007, 2008 and 2009. Have the number of Black-Non-Hispanic students continued to increase? If so, what was the enrollment for each of the 3 semesters?
2. In the Spring of 2009, how many students were enrolled in College of Business?

Course Snapshot Questions:

1. Between the Spring 2007, Spring 2008, and Spring 2009 which colleges had an increase in the number of course offerings?
2. Between Spring 2008 and Spring 2009, which Science and Technology department had a decrease in enrollment (CMS, ET, or SCI)?

Expanded Practice

1. What was the enrollment by student type for “UG New FTIC” students in Fall2008?
2. Name the most enrolled age group and its student amount in Spring 2009.

SNAPSHOTS PRACTICE QUESTIONS ANSWER KEY

Note: Data in eIntelligence is refreshed on a regular basis. Historic data may change slightly due to changes and corrections made to the source data (e.g. Banner).

Applicant Snapshot Questions:

1. In the Fall of 2007, how many College of Public Service Females applied? (60)
 - a. **Input Parameters** tab, click **Fall2007**
 - b. Click **Applicant Snapshot** tab
 - c. Click **Load Applicant Snapshot** button
 - d. Drill-down into **applicant counts** bar graph
 - e. View applicants by **College**
 - f. Drill down into **College of Public Service** bar graph
 - g. View applicants by **Gender**
2. In the Spring of 2009, how many White – Non – Hispanic students were accepted on probation?(10)
 - a. **Input Parameters** tab, choose **Spring to Spring**
 - b. Click **Spring2009**
 - c. Click **Applicant Snapshot** tab
 - d. Click **Load Applicant Snapshot** button
 - e. Drill-down into **applicant counts** bar graph
 - f. View applicants by **Decision**
 - g. Drill down into **Accepted on Probation** bar graph
 - h. View applicants by **Ethnicity**

Enrollment Snapshot Questions:

1. Compare Spring 2007, 2008 and 2009. Have the number of Black-Non-Hispanic students continued to increase? (Yes) If so, what was the enrollment for each of the 3 semesters? (2804, 3121, 3234)
 - a. **Input Parameters** tab, choose **Spring to Spring**
 - b. Hold down CTRL button on keyboard and click **Spring, 2007, Spring 2008** and **Spring 2009**
 - c. Click the **Click Multi-term Enrollment Snapshot**
 - d. Click **Load Enrollment Snapshot** button
 - e. Change **Select chart** to **By Ethnicity**
 - f. See the **Black-Non-Hispanic** bars
 - g. To see numbers hidden behind other numbers, hover your mouse over the bar
2. In the Spring of 2009, how many students were enrolled in College of Business? (1,915)
 - a. **Input Parameters** tab, choose **Spring to Spring**
 - b. Select **Spring 2009** from term(s)
 - c. Click **Enrollment Snapshot** tab
 - d. Click **Load Enrollment Snapshot** button
 - e. See **Enrollment by College** chart

Course Snapshot Questions:

1. Between the Spring 2007, Spring 2008, and Spring 2009 which colleges had an increase in the number of course offerings? (PS, ST, UC)
 - a. **Input Parameters** tab, choose **Spring to Spring**
 - b. Hold down CTRL button on keyboard and click **Spring, 2007, Spring 2008** and **Spring 2009**
 - c. Click **Course Snapshot** tab
 - d. Click **Load Course Snapshot** button
 - e. See **Courses By College** graph
2. Between Spring 2008 and Spring 2009, which Science and Technology department had a decrease in enrollment (CMS, ET, or SCI)?(ET)
 - a. **Input Parameters** tab, choose **Spring to Spring**
 - b. Hold down CTRL button on keyboard and click **Spring 2008** and **Spring 2009**
 - c. Click **Course Snapshot** tab
 - d. Click **Load Course Snapshot** button
 - e. In the top left **Course by College** area, click one of the bars in the **ST** set
 - f. See the **Enrollment by Department** area

Expanded Practice

1. What was the enrollment by student type for “UG New FTIC” students in Fall 2008? (973)
 - a. Open the **Enrollment Information** data block
 - b. In the **Input Parameters** tab, click **Fall 2008**
 - c. Click the **Enrollment Snapshot** tab
 - d. Click **Load Enrollment Snapshot** button
 - e. See the **Enrollment by Student Type** area
2. Name the most enrolled age group and its student amount in Spring 2009. (“25-30,” 3,404)
 - a. Open the **Enrollment Information** data block
 - b. In the **Input Parameters** tab, choose **Spring to Spring**
 - c. Click **Spring 2009**
 - d. Click the **Enrollment Snapshot** tab
 - e. Click **Load Enrollment Snapshot** button
 - f. See the **Enrollment by Age** pie chart

ANALYTICS

APPLICANT, ENROLLMENT, COURSE ANALYTICS AND DAILY COURSE INFORMATION

APPLICANT ANALYTICS

Choose Input Parameters in the Applicant Information Data Block

1. First, decide the “**Comparison Method**” you would like to employ. The choices offered are:
 - **Fall to Fall** – Shows only Fall terms
 - **Spring to Spring** – Shows only Spring terms
 - **Spring to Fall** – Shows only Fall and Spring terms
 - **Term order** – Shows all types of terms (Fall, Spring, Summer and Winter)
2. Select the term(s) you wish to see.
To select more than one term, hold down the CTRL button on your keyboard and click each one separately.
3. In the following boxes, identify which specific data you would like to view. The choices offered are:
 - College(s)
 - Major(s)
 - Level(s) – Undergraduate, Graduate
 - Student Type(s) – Undeclared, New Freshman, Transfer, Continuing, etc.

Please note: There is a checkbox above each section that allows you to choose all.

Enter the Applicant Analytics Tab

1. To view multiple applicant data categories at once within a numerical table format, click the **Applicant Analytics** tab.
2. In the Applicant Analytics area, click the **Load Applicant Information** button to generate the data.
Please note: You will be viewing the data that was selected on the Input Parameters tab.
3. You may click-and-drag categories from the top of the screen to various sections of the table. The “hot spots” you may drag categories into are indicated by **red boxes (A & B)** in the following screenshot:

Click and drag these categories to “hot spots” found in the table below.

A.

B.

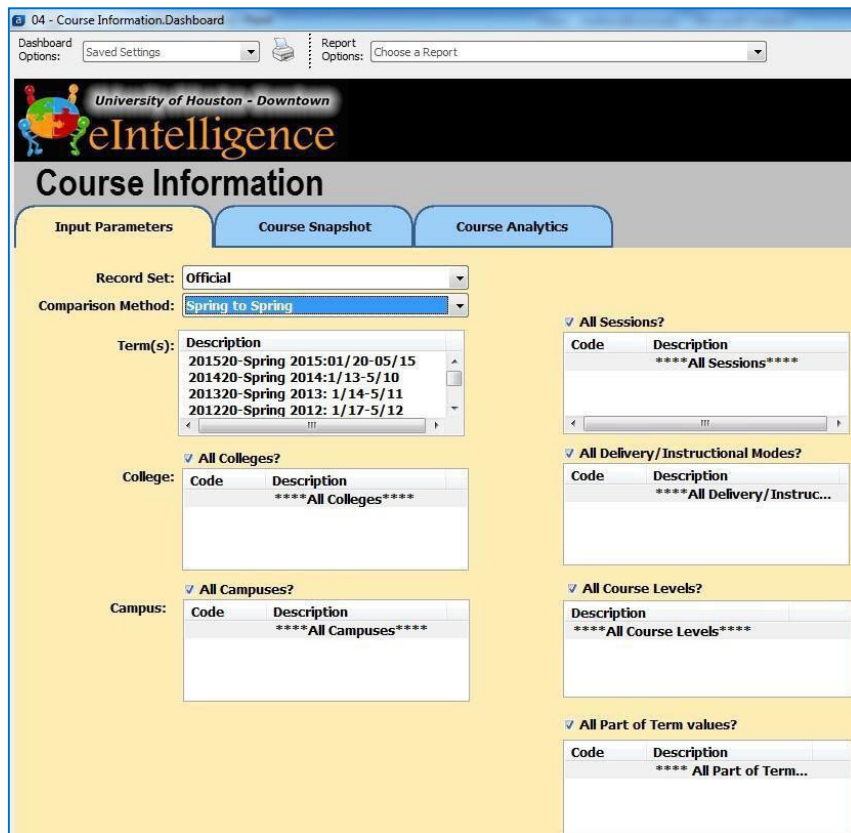
| Term | ACT Range | Headcount | Total by ROWS |
|------------|-----------|-----------|---------------|
| 2: 6 - 11 | | 11 | 11 |
| 3: 12 - 17 | | 286 | 286 |
| 4: 18 - 23 | | 277 | 277 |
| 5: 24 - 29 | | 52 | 52 |

- A. **Columns:** area for data categories you would like to see listed as the column headers
- B. **Rows:** area for data categories you would like to see listed as the row headers

Note: After dragging the categories to the hotspots, the “+” sign must be clicked to expand the data to see the individual values.

ENROLLMENT AND COURSE ANALYTICS

The process for analytics is the same for both the Enrollment and Course Information data blocks. Shown below is the **Course Information** data block.



Choose Parameters for the Course Data Block

1. Choose which **Record Set** you wish to use in analyzing enrollment data.
 - **Official:** data as of the reporting day for the university (20thday).
 - **Current:** data as of the end of the semester for prior semesters. When a semester is in progress, it is data as of the prior day (the system is refreshed each night).
2. Next, decide which “**Comparison Method**” to employ. The choices offered are:
 - **Fall to Fall – Shows only Fall terms**
 - **Spring to Spring – Shows only Spring terms**
 - **Spring to Fall – Shows only Fall and Spring terms**

- **Term order** – Shows all types of terms (Fall, Spring, Summer and Winter)
3. Select the term(s) you wish to see.
 4. In the following sections, identify which specific data you would like to view. The choices offered are:
 - College
 - Campus
 - AllSessions?
 - All Delivery/Instructional Modes?
 - All CourseLevels?
 - All Part of Term Values?

To select more than one term, hold down the CTRL button on your keyboard and click each one separately. There is a checkbox above each section that allows you to choose all.

Enter the Analytics Tab

1. To analyze enrollment data within a numerical table format, click the **Course Analytics** tab.
2. Then click the **Load Enrollment Information** button to generate the data.
Please note: you will be viewing the data that was selected on the Input Parameters tab.
3. You may click-and-drag categories from the top of the screen to various sections of the table.

Click and drag these categories to "hot spots" found in the table below.

The "hot spots" you may drag categories into are indicated by red boxes:

| Available Dimensions | | | | | | | | |
|----------------------|------------------------|--------------------|------------------|--------------------|------------------|--------------------|------------------|---------------|
| Academic_Start | AdmitTypeCurre | AdmitTypeOrig | AgeRange | ASTD Override | Classification | College | Credit Hours | Department |
| Ethnicity | FinaidRecip | FT or PT | Gender | GPA_Range | Major | Paid | Residency | Student Level |
| Columns | A | | | | | | | |
| Term | | | | | | | | |
| Student Type | Term | 200810 - Fall 2007 | | 200910 - Fall 2008 | | 201010 - Fall 2009 | | |
| | Student Type | Headcount | Registered Hours | Headcount | Registered Hours | Headcount | Registered Hours | |
| | | Value | Value | Value | Value | Value | Value | |
| | Academic Fresh Start | 2 | 9 | 1 | 6 | 1 | 9 | |
| | Continuing | 7354 | 76827 | 7432 | 76848 | 8055 | 82751 | |
| | Continuing Fresh Start | 0 | 0 | 0 | 0 | 1 | 6 | |
| | Continuing Master's | 75 | 417 | 100 | 537 | 109 | 585 | |
| | Continuing Post-Bac | 193 | 1289 | 196 | 1370 | 231 | 1613 | |
| | Continuing Special | 0 | 0 | 0 | 0 | 1 | 9 | |
| | Continuing Transient | 16 | 145 | 14 | 124 | 5 | 56 | |
| | First Time in College | 1049 | 12154 | 973 | 11159 | 1051 | 11937 | |
| | Freshman Transfer | 111 | 1253 | 115 | 1297 | 136 | 1583 | |
| | New Master's | 45 | 264 | 46 | 246 | 52 | 288 | |
| | New Post-Baccalaureate | 188 | 1175 | 128 | 739 | 111 | 762 | |
| | Total by COLUMNS | 11793 | 119007 | 12283 | 121334 | 12742 | 125981 | |

- Columns:** area for data categories you would like to see listed as the column headers
- Rows:** area for data categories you would like to see listed as the row headers

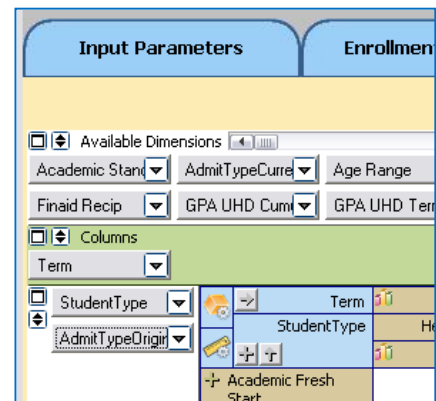
Please note: After dragging the categories to the hotspots, the "+" sign must be clicked to expand the data to see the individual values.

EXAMPLES OF ANALYTIC QUERIES

How many current undergraduate students started at UHD as FTIC? (First Time in College— this student type is comprised of students who are new to higher education. This cohort of students is used for external reporting of retention and graduation rates)

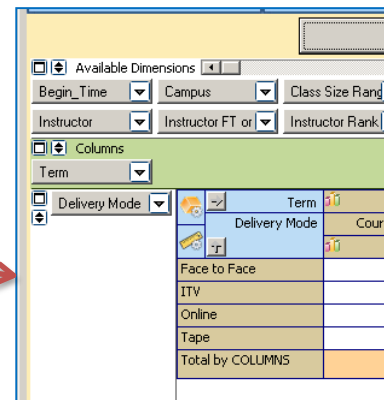
1. Log into eIntelligence and expand the **eIntelligence** folder from the explorer tree on the left side of the screen.
2. Since we wish to look at enrollment data, click the **Enrollment Information** data block.
3. Click the **Quick View** button.
4. Choose the **Comparison Method** and **terms** you wish to view.
5. Click the **Enrollment Analytics** tab.
6. Click the **Load Enrollment Information** button.
7. Drag the **Student Type** dimension back to dimensions area. Drag the dimension **Admit Type Original** to the row hotspot.
8. For the sake of this example, you are interested in **New Freshmen** and **New Freshmen International**.

You may place a filter on it to see only them, or you can add % to see them as part of the whole.



How full are the online classes?

1. Log into eIntelligence and expand the **eIntelligence** folder from the explorer tree on the left side of the screen.
2. Since we wish to look at course data, click the **Course Information** data block.
3. Click the **Quick View** button.
4. Choose the comparison method and terms you wish to view.
5. Click the **Course Analytics** tab, and then the **Load Course Information** button.
6. Drag **Delivery Mode** dimension down to the row hotspot.
7. Scroll to the right to find the **Avg Pct Seats Filled** column.



How many applications were received by the posted FTIC deadline for Fall 2012 compared to the same point in time (relative to the start of the

fall semester) the previous year?

1. Log into eIntelligence and expand the **eIntelligence** folder from the explorer tree on the left side of the screen.
2. Since we wish to look at applicants, click the **Applicant Information** data block.
3. Click the **Quick View** button.
4. Choose the **Comparison Method**, Fall to Fall, and **term(s)**, 2011 and Fall 2012 for the **Terms on the Input Parameters** tab.
5. To answer this question, we will not need to change any of the other fields.
6. Click the **Applicant Analytics** tab.
7. The Posted deadline is 6/1/12 (based on the Admissions website). The equivalent date the year before is 5/27/11. These are the dates that will enter for **Application Date** and **Second Application Date**. The third Application date will remain, “**No term selected**”.

8. Click **Load Applicant Information**.
9. We will find a difference of 1,356 applicants.

| Application Date | Second Application Date | Third Application Date |
|-------------------------------------|-------------------------------------|--------------------------------------|
| 2012/06/01 Fall 2012: 8/27-12/15 | 2011/05/27 Fall 2011: 8/22-12/16 | No term selected No term selected |

| Available Dimensions | Columns |
|---|---------|
| Academic Stand ACT Composite ACT Range Admit Type Age Range Application Date App Status Banner ID City College Decision Ethnicity Major Name Finaid Applicant Gator Email Gender High School | Term |

| | Fall 2011: 8/22-12/16 | Fall 2012: 8/27-12/15 | Total by ROWS |
|-----------|--------------------------|--------------------------|---------------|
| Headcount | | | Headcount |
| Value | | | Value |
| | 8644 | 10000 | 18644 |

Choose Input Parameters in the Daily Course Information Data Block

1. Choose which **Record Set** you wish to use in analyzing enrollment data.
 - **Official:** data as of the reporting day for the university (20thday).
 - **Current:** data as of the end of the semester for prior semesters. When a semester is in progress, it is data as of the prior day (the system is refreshed each night).

Note: Only the current record set will be available for the Daily Course Information.

2. Next, decide which “**Comparison Method**” to employ. The choices offered are:
 - **Fall to Fall** – Shows only Fall terms
 - **Spring to Spring** – Shows only Spring terms
 - **Spring to Fall** – Shows only Fall and Spring terms
 - **Term order** – Shows all types of terms(Fall, Spring, Summer and Winter)

3. Select the **Term(s) and Term Date(s)**. You can select multiple dates in one semester or similar dates in different semesters. To allow for easier comparison, the dates as well as the index (how far the date is

from the start of classes) are both included on the Input Parameters Screen.

4. In the following sections, identify which specific data you would like to view. The choices offered are:

- College
- Campus
- All Part of Term values?
- All Sessions?
- All Delivery/Instructional Modes?
- All Course Levels?

*To select more than one term, hold down the CTRL button on your keyboard and click each one separately.
There is a checkbox above each section that allows you to choose all.*

Note: In the Executive Dashboard and Daily Course the current day's data will represent the data as of the current day's morning snapshot. Previous days' data will represent the end of that day's snapshot.

Note: Occasionally there may be a date for which there is not data in Daily Course Information, this is due to Banner being down for maintenance and so a snapshot was not able to be taken that day.

EXAMPLES OF DAILY COURSE QUERIES

Is the online enrollment 25 days before the first day of Summer I 2011 higher or lower than the same point in time for Summer I 2010?

1. Log into eIntelligence and expand the **eIntelligence** folder from the explorer tree on the left side of the screen.
2. Since we wish to look at daily course data, click the **Daily Course Information** data block.
3. Click the **Quick View** button.
4. Choose the **Record Set**, **Comparison Method** and **Term(s)** you wish to view.
5. Click the **Course Analytics** tab.

06 - Daily Course Information.Dashboard

Dashboard Options: Saved Settings

Report Options: Choose a Report

University of Houston - Downtown
eIntelligence

Daily Course Information ~ Input Parameters

Input Parameters | **Course Analytics**

Record Set: Current

Comparison Method: Term Order

Term(s): 201130-Summer I 2011: 6/6-7/7
201030-Summer I 2010: 6/1-7/1
Select Term 3

Date: -25 * 05/12/2011 Thursday
-25 * 05/07/2010 Friday
Select Term 3 Index*Date

College: All Colleges?
Code Description
**** All Colleges****

Campus: All Campuses?
Code Description
**** All Campuses****

All Part of Term values?
Code Description
**** All Part of Term...

All Sessions?
Code Description
**** All Sessions****

All Delivery/Instructional Modes?
Code Description
**** All Delivery/Instructi...

All Course Levels?
Description
**** All Course Levels****

6. Click the **Load Course Information** button.

Daily Course Information ~ Course Analytics

Input Parameters | **Course Analytics**

***** Load Course Information *****

7. Drag the Delivery **Mode** dimension to the row hotspot.

Daily Course Information ~ Course Analytics

Input Parameters | **Course Analytics**

Delivery Mode | ***** Load Course Information *****

Available Dimensions: Available Dimensions

Begin_Time | Break Even Poir | Campus | Class Size Rang | College | Course Div | Course Level | Course | Course Number | CR_HR | CRN | Cross_Listed_G | DaysPerWeek | Delivery Mode | Department | Developmental | Instructor | Instructor FT or

Columns: Columns

Term | Date | Delivery Mode

| Total by ROWS | | | | | | |
|----------------------------------|--------------|--------------|----------------|--------------------|---------------|-------|
| Term | Course Count | Course Hours | Maximum Enrlmt | Current Enrollment | Paid Students | |
| Value | Value | Value | Value | Value | Value | Value |
| 201030 - Summer I 2010: 6/1-7/1 | 322 | 962 | 9489 | 4188 | 430 | |
| 201130 - Summer I 2011 (6/6-7/7) | 339 | 1015 | 10676 | 4736 | 420 | |
| Total by COLUMNS | 661 | 1977 | 20165 | 8924 | 850 | |

Measures: Measures

Course Count | Course Hours | Maximum Enrlmt | Current Enrollm | Paid Students | Stu Cred Hrs | Avq Pct Seats F | Avq Pct Room F | Break Even Poir | Open Sections | Closed Sections | XLink Enrollmen

- Click the **Measure Manager** icon to change viewable measures. Use the disable all button to set all measures to disable status. Next, enable the **Stu Cred Hrs** and **Percent by COLUMN** measures by clicking the corresponding box until you see a green check mark. Click the **Accept** button.

- View results based on selected criteria.

| ***** Load Course Information ***** | | | | | |
|-------------------------------------|-----------------|-----------------------|-----------------|--------------------|---------------|
| Available Dimensions | | | | | |
| Begin_Time | Break Even Poir | Campus | Class Size Rang | College | Course Div |
| CR_HR | CRN | Cross_Listed_G | DaysPerWeek | Department | Developmental |
| Columns | | | | | |
| Term | Date | Delivery Mode | Total by ROWS | | |
| | | | Stu Cred Hrs | | |
| | | | Value | Percents by COLUMN | |
| 201030 - Summer I 2010: 6/1-7/1 | 5/7/2010 | Face to Face | 7401 | 28.05% | |
| | | Hybrid | 1212 | 4.59% | |
| | | Online | 3780 | 14.32% | |
| | | Sub-total by 5/7/2010 | 12393 | 46.96% | |
| 201130 - Summer I 2011 (6/6-7/7) | 5/12/2011 | Face to Face | 7376 | 27.95% | |
| | | Hybrid | 2573 | 9.75% | |
| | | Online | 4047 | 15.34% | |
| Sub-total by 5/12/2011 | | | 13996 | 53.04% | |
| Total by COLUMNS | | | 26389 | 100.00% | |

ANALYTICS PRACTICE QUESTIONS

Applicant Analytics Questions:

Intro questions:

1. In the Fall of 2009, how many Hispanic females applied at UHD?
2. In the Spring of 2008, what was the total number of students who had the Academic Standing of "Good Standing?" What age range had the largest number of students in "Good Standing?"

Advanced questions:

1. How many applicants were there in the Spring of 2008?
2. What percentage of students applied for Graduate school in the Fall 2009?
3. Comparing the Fall of 2008 and the Fall of 2009, which semester had the highest percentage of females with a completed Application Status?
4. For the Fall of 2007 and the Fall of 2008, what percent of female Hispanic students did not register for classes after applying?

Enrollment Analytics Questions:

1. In the Fall of 2008, which major was declared most often?
2. In the Fall of 2007, what percentage of Hispanic students did not receive Financial Aid from the total number of students enrolled?

Course Analytics Questions:

1. In the Fall of 2009, how many courses were in rooms filled 51 – 75% of the time?
2. In the Fall of 2008, how many courses were held on Friday?

Daily Course Analytics Questions:

1. Comparing the first day of class for Fall 2009 to the first day of class for Fall 2010, which Session type had an increase in enrollment?

2. How many enrollments occurred for Fall 2011 between April 25th and May 10th?

Expanded Practice

1. In Fall 2009, which ethnicity has the most 25-30-year-old applicants?
2. How many courses had their seats 76-100% filled in Spring 2007?

ANALYTICS PRACTICE QUESTIONS ANSWER KEY

Note: Data in eIntelligence is refreshed on a regular basis. Historic data may change slightly due to changes and corrections made to the source data (e.g. Banner).

Applicant Analytics Questions:


Intro questions:


1. In the Fall of 2009, how many Hispanic females applied at UHD? (2,497)
 - a. **Input Parameters** tab, choose **Fall2009**
 - b. Click the **Applicant Analytics** tab
 - c. Click the **Load Applicant Information** button
 - d. Drag the **Ethnicity** dimension into the row hotspot
 - e. Drag the **Gender** dimension into the row hotspot
 - f. Expand the + beside **Hispanic**
2. In the Spring of 2008, what was the total number of students who had the Academic Standing of "Good Standing?" (1,068) What age range had the largest number of students in "Good Standing?" (25-30)
 - a. **Input Parameters** tab, choose **Spring2008**
 - b. Click the **Applicant Analytics** tab
 - c. Click the **Load Applicant Information** button
 - d. Drag the **Academic Standing** dimension to the row hotspot (for answer#1)
 - e. Drag the **Age Range** dimension into the row hotspot


- f. Expand the + beside **Good Standing**

Advanced questions:

1. How many applicants were there in the Spring of 2008? (5,277)
 - a. **Input Parameters** tab, choose **Spring2008**
 - b. Click the **Applicant Analytics** tab
 - c. Click the **Load Applicant Information** button


2. What percentage of students applied for Graduate school in the Fall of 2009? (1.34%)
 - a. **Input Parameters** tab, choose **Fall2009**
 - b. Click the **Applicant Analytics** tab
 - c. Click the **Load Applicant Information** button
 - d. Drag the **Level** dimension to the row hotspot
 - e. Next to the FX button, click the **Sum** button 
 - f. In the dialog box that appears, expand the **Headcount** option by clicking the plus
 - g. Place an X beside **Value** and a checkmark beside **Percents by COLUMN**
 - h. Click **Accept (green checkmark)**

3. Comparing the Fall of 2008 and the Fall of 2009, which semester had the highest percentage of females with a completed Application Status? (Fall 2008 - .72%)
 - a. **Input Parameters** tab, choose **Fall 2008** and **Fall2009**
 - b. Click the **Applicant Analytics** tab
 - c. Click the **Load Applicant Information** button
 - d. Drag the **Gender** dimension to the row hotspot
 - e. Drag the **App Status** dimension to the row hotspot
 - f. Next to the FX button, click the **Sum** 
 - g. In the dialog box that appears, expand the **Headcount** option by clicking the plus.
 - h. Place an X beside **Value** and a checkmark beside **Percents by COLUMN**
 - i. Click **Accept (green checkmark)**

4. For the Fall of 2007 and the Fall of 2008, what percent of female Hispanic students did not register for classes after applying? (Fall 2007 – 10.66%, Fall 2008 –11.59%)
 - a. **Input Parameters** tab, choose **Fall 2008** and **Fall2009**
 - b. Click the **Applicant Analytics** tab
 - c. Click the **Load Applicant Information** button
 - d. Drag the **Ethnicity** dimension to the row hotspot
 - e. Drag the **Register** dimension to the row hotspot
 - f. Drag the **Gender** dimension to the row hotspot
 - g. Next to the FX button, click the **Sum** button 
 - h. In the dialog box that appears, expand the **Headcount** option by clicking the plus.
 - i. Place an X beside **Value** and a checkmark beside **Percents by COLUMN**
 - j. Click **Accept (green checkmark)**
 - k. Click the + beside **Hispanic**
 - l. Click the + beside **N** (did not register)

Enrollment Analytics Questions:

1. In the Fall of 2008, which major was declared most often? (**Accounting**)
 - a. **Input Parameters** tab, choose **Fall2008**
 - b. Click the **Enrollment Analytics** tab
 - c. Click the **Load Enrollment Information** button
 - d. Drag the **Major** dimension into the row hotspot
 - e. Click the **Credited Hours** column title twice to list figures in descending order

2. In the Fall of 2007, what percentage of Hispanic students did not receive Financial Aid from the total number of students enrolled? (**16.27%**)
 - a. **Input Parameters** tab, choose **Fall2007**
 - b. Click the **Enrollment Analytics** tab
 - c. Click the **Load Enrollment Information** button
 - d. Drag the **Ethnicity** dimension to the row hotspot
 - e. Drag the **Finaid Recip** dimension to the row hotspot
 - f. Next to the FX button, click the **Sum** button 
 - g. In the dialog box that appears, expand the **Headcount** option by clicking the plus.
 - h. Place an X beside **Value** and a checkmark beside **Percent by COLUMN**
 - i. Click **Accept (green checkmark)**
 - j. Click the + beside **Hispanic**

Course Analytics Questions:

1. In the Fall of 2009, how many courses were in rooms filled 51 – 75% of the room's capacity? (**478**)
 - a. Open the **Course Information** data block
 - b. In the **Input Parameters** tab, choose **Fall2009**
 - c. Click the **Course Analytics** tab
 - d. Click the **Load Course Information** button
 - e. Drag the **% Room Filled** dimension to the left row hotspot
 - f. See the **51-75%** row and the **Course Count** column

2. In the Fall of 2008, how many courses were held on Friday? (**68**)
 - a. Open the **Course Information** data block
 - b. In the **Input Parameters** tab, choose **Fall2008**
 - c. Click the **Course Analytics** tab
 - d. Click the **Load Course Information** button
 - e. Drag the **Friday** dimension to the left hand row hotspot
 - f. See the **Course Count** column

Daily Course Analytics Questions:

1. Comparing the first day of class for Fall 2009 to the first day of class for Fall 2010, which Session type had an increase in enrollment? (Virtual)
 - a. Open the **Daily Course Information** data block
 - b. In the **Input Parameters** tab, choose **Fall 2010 and Fall2009**
 - c. Select **Date** with index zero
 - d. Click the **Course Analytics** tab
 - e. Click the **Load Course Information** button
 - f. Drag the **Session** dimension to the left hand row hotspot
 - g. Drag **Date** and **Term** to the top row hotspot
 - h. See the **Current Enrollment** column

2. How many enrollments occurred for Fall 2011 between April 25th and May 10th? (5,040)
 - a. Open the **Daily Course Information** data block
 - b. In the **Input Parameters** tab, choose **Fall2011**
 - c. Select **Date** 04/25/2011 and 05/10/2011
 - d. Click the **Course Analytics** tab
 - e. Click the **Load Course Information** button
 - f. See the **Current Enrollment** column
 - g. Find the different between each number 8284-3208=5,040

Expanded Practice

1. In Fall 2009, which ethnicity has the most 25-30-year-old applicants? (Black/Non-Hispanic)
 - a. Open the **Applicant Information** data block
 - b. Choose **Fall2009**
 - c. Click the **Applicant Analytics** tab
 - d. Click the **Load Applicant Information** button
 - e. Drag the **Age Range** dimension to the left hand row hotspot
 - f. Drag the **Ethnicity** dimension to the top green hotspot
 - g. In the workspace area, click the top left plus (+) to expand the Ethnicity data

| Columns | |
|-----------|-----------|
| Term | Ethnicity |
| Age Range | Term |
| | Age Range |
| | Headcount |
| | Value |
| 17-21 | 64 |

- h. See the **25-30** row and find which ethnicity column has the highest number

2. How many courses had their seats 76-100% filled in Spring 2007? (786)
 - a. Open the **Course Information** datablock

- b. From the “**Comparison Method**” drop-down, choose **Spring to Spring**
- c. Choose **Spring2007**
- d. Click the **Course Analytics** tab
- e. Click the **Load Applicant Information** button
- f. Drag the **% Seats Filled** dimension to the left hand row hotspot
- g. See the **Course Count** column and the **76-100%** row

COHORT TRACKING

APPLICANT COHORT DATA BLOCK

The **Cohort** data block allows you to track through time the cohort you select and look at their progress at UHD.

Cohort Tracking

1. Expand the **eIntelligence** folder.
2. Double-click the **Applicant Cohort** data block.
3. In the **Input Parameters** tab, select the desired the data. For example; **Fall 2009** and leave the rest as **All**.
4. Click the **Cohort Tracking** tab.
5. Click the **“Load Cohort Information”** button. *It may take a few minutes to load.*
6. The default set-up shows one dimension:
 - **Term1Reg** – if enrolled the first term(Y/N)



| | Term1Reg | Total by ROWS |
|------------------|----------|---------------|
| | | Headcount |
| | | Value |
| N-201010 | | 7476 |
| Y-201010 | | 4399 |
| Total by COLUMNS | | 11875 |

ADVANCED TOPICS

EXPORTING TO SPREADSHEET, CALCULATED FIELDS, AND MORE

EXPORT TO SPREADSHEET

At any time inside the analytics tabs, you may export the visible data (only expanded parts) to a spreadsheet. Simply right click anywhere in the work area and choose **Export to Spreadsheet**.



CALCULATIONS

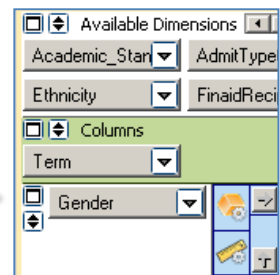
Calculations in UHD's eIntelligence are for more advanced users who wish to create percentages or averages between data items. The following is an example of how to create a calculation in a column.

What is the percentage of male vs female applicants regarding registered hours for Fall2009?

1. Expand the **eIntelligence** folder from the explorer tree on the left side of the screen.
2. Since we wish to look at the amount of hours registered, click the **Enrollment Information** data block, and click the **Quick View** button.
3. In the **Input Parameters** tab, choose the parameters you wish to use for the calculation.

4. Click the **Enrollment Analytics** tab.
5. Click the **Load Enrollment Information** button at the top right.

6. Drag the **Gender** dimension into the row hotspot. 
7. Down below in the **Measures** dimension area, click the **FX** button. 




8. Click the "Run calculated measure dialog"
9. Click the **Add New Measure** button.

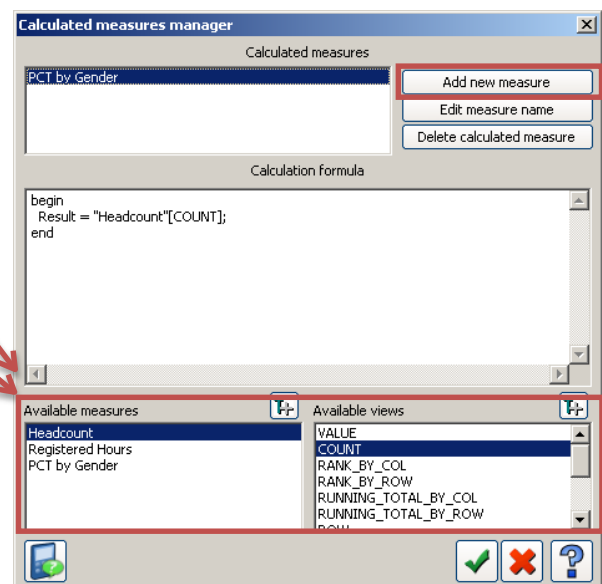
10. Name this calculation **PCTBy Gender**.

11. In the left pane, double-click **HEADCOUNT**.

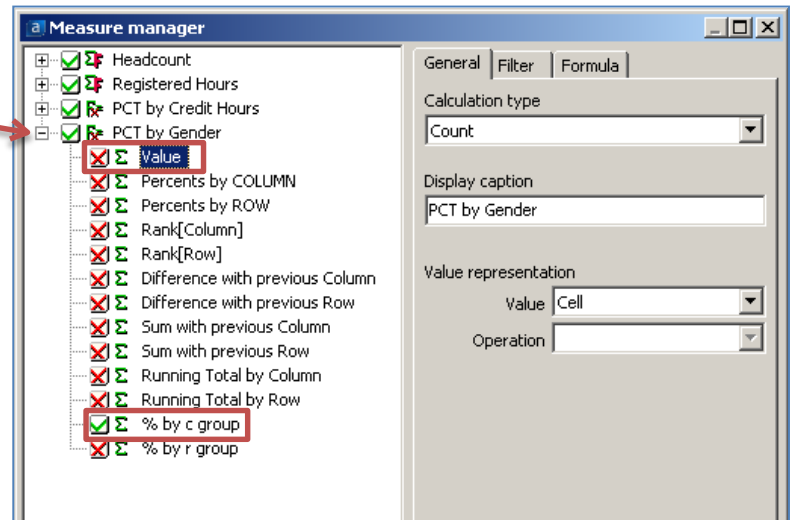
12. In the right pane, double-click **COUNT**.

13. Click **OK** (green checkmark).

14. Next to the FX button, click the **Sum** button. 



15. In the dialog box that appears, expand the **PCT by Gender** option by clicking the plus.
16. Place an X beside **Value** and a checkmark beside **% bygroup**.
17. Now expand the **Registered Hours** option. Place an X beside **Value** and a checkmark beside **% by c group** again.
18. Click **OK (green checkmark)**.
19. Now under each new measure column you created, you should see the percentage values.



| | | 201010 - Fall 2009 | | |
|------------------|--------|--------------------|------------------|---------------|
| Term | Gender | Headcount | Registered Hours | PCT by Gender |
| | | Value | % by c group | % by c group |
| F | | 7832 | 61.12% | 61.47% |
| M | | 4910 | 38.88% | 38.53% |
| Total by COLUMNS | | 12742 | 100.00% | 100.00% |

GLOSSARY

eINTELLIGENCE GLOSSARY

| Term | Definition |
|----------------------------------|--|
| % ROOMFILLED | Proportion/percentage of seats filled divided by the total number of seats available in the room |
| % SEATS FILLED | Proportion of filled seats divided by the maximum capacity established for the CRN |
| ACCUPLC ELEM ALG(APEA) | Accuplacer Elementary Algebra scores |
| ACCUPLCREAD(APRC) | Accuplacer Reading Comprehension scores |
| ACCUPLC WRIT(APSS) | Accuplacer Sentence Skills scores |
| ACCUPLC WRIT ESY(APWE) | Accuplacer Written Essay scores |
| ACADEMICSTANDING | Rule-based value showing student's academic progress by term |
| ACTCOMPOSITE | College entrance exam. <i>Note: Test Scores were not required for admission until 2011. If multiple scores are submitted, the highest is brought into eIntelligence</i> |
| ACT ENGLISH | ACT component test |
| ACT MATH | ACT component test |
| ACT READING | ACT component test |
| ACTSCIENCE | ACT component test |
| ACT SOCIALSCIENCE | ACT component test; In 1989, this component was replaced by the Reading Component. |
| ADMITTYPE | How an incoming applicant's APPLICATION is classified FOR ADMITTANCE |
| ADMITTYPECURRENT | Admit Type displayed in a Continuing or Returning Student record |
| ADMITTYPEORIGINAL | Admit Type displayed in Applicant's first application record |
| AGERANGE | Students' age groups |
| APPSTATUS | Status of student application (e.g., complete, incomplete, decision made) |
| APPLICANTCOHORT | Area that displays data by specific applicant cohort group (e.g., graduation rates by admit term) using dimensions and measures established for cohorts. |
| APPLICANTCOHORT-COHORT TRACKING | Tab within Applicant Cohort that show data based on Input Parameters selected and allows further drill down using dimensions |
| APPLICANTCOHORT-INPUT PARAMETERS | Tab within Applicant Cohort that initially extract groups by admit term, college, level, major, financial aid applicant, gender and student type |

| | |
|--|--|
| APPLICANTINFORMATION | Area that displays data by specific applicant groups using snapshots and analytics established for applicants. |
| APPLICANT INFORMATION- INPUTPARAMETERS | Tab within Applicant Information that initially extract groups by comparison method (e.g., fall to fall), term, level, college, student type and major |
| APPLICANT INFORMATION- APPLICANTANALYTICS | Tab within Applicant Information displaying data as selected on Input Parameter tab. Can further drill down using dimensions and measures to display greater detail |
| APPLICANT INFORMATION- APPLICANTSNAPSHOT | Multiple applicant views in graph form. Ability to drill down and display graphs of additional groups in detail |
| APPLIED TO GRADUATETERM | Indicates the term a student has indicated they plan to graduate by the formal application process required by each academic college |
| ATTRITION TERM | Term that the student is not enrolled at UHD |
| ASTD OVERRIDE | Academic standing changed within a term |
| AVGENROLLMENT | A measure created by taking the current enrollment divided by the count of courses |
| AVG PCT ROOMFILLED | Average percentage of seats filled divided by the total number of seats available in the room. <i>NOTE: This value is set to zero for classes that do not have a room assigned(including online classes)</i> |
| AVG PCT SEATSFILLED | Average percentage of filled seats divided by the maximum capacity established for the CRN |
| AVG TERM UHGGPA | Average UHD GPA by term |
| AVG TERM TFERGPA | Average transfer GPA by term |
| AVG TERM HRSEARNED | Average hours earned by term |
| AVG TERM HRSATTMPT | Average hours attempted by term |
| BANNER ID | Nine digit identification number assigned to applicant/student |
| BEGIN_TIME | Class/Section Start Time |
| BMV HOLD | Indicate whether or not an Applicant or Student has the hold requiring a Meningitis shot on their record |
| BREAK EVENPOINT (ADJUNCT) | Number of students needed to take the class to offset the average cost (faculty salary only) of a faculty of rank of Adjunct teaching the class. The breakeven point visible in eIntelligence is determined assuming an average faculty salary based on rank and department. |

| | |
|--|--|
| BREAK EVEN POINT (ASSISTANT) | Number of students needed to take the class to offset the average cost (faculty salary only) of a faculty of rank of Assistant Professor teaching the class. The breakeven point visible in eIntelligence is determined assuming an average faculty salary based on rank and department. |
| BREAK EVENPOINT (faculty salary only) of a faculty of rank of Associate Professor teaching the (ASSOCIATE) | Number of students needed to take the class to offset the average cost class. The breakeven point visible in eIntelligence is determined assuming an average faculty salary based on rank and department. |
| BREAK EVENPOINT (LECTURER) | Number of students needed to take the class to offset the average cost (faculty salary only) of a faculty of rank of Lecturer teaching the class. The breakeven point visible in eIntelligence is determined assuming an average faculty salary based on rank and department. |
| BREAK EVENPOINT (PROFESSOR) | Number of students needed to take the class to offset the average cost (faculty salary only) of a faculty of rank of Professor teaching the class. The breakeven point visible in eIntelligence is determined assuming an average faculty salary based on rank and department. |
| BUILDING | The building that corresponds to the room assignment for a specific class (online and many off-campus classes will be TBA) |
| BUSINESS INTELLIGENCE | The process of gathering and analyzing industry information for the purpose of decision making |
| CAMPUS | Campus/off-campus values |
| CATALOGTERM | Academic Catalog a student is following in terms of their graduation requirements |
| CELLPHONENUMBER | Cellular telephone number as provided by applicant/student |
| CITY | City of student's address |
| CLASSSIZERANGE | Number of students in the course broken into ranges, based on maximum enrollment |
| CLASSIFICATION | Student level (e.g. Freshman) |
| CLOSEDSECTIONS | Section no longer allow student registration when Actual enrollment= Maximum enrollment. |
| COHORT | Group of applicants or students identified and monitored by a term, year or other characteristics |
| COLLEGE | UHD academic divisions, some of who house departments |
| COMPARISIONMETHOD | Data displayed by term/semester-based selection |

| | |
|-------------------------------------|---|
| CONDITIONALADMIT | Yes/No Indicator if an applicant or student was conditionally accepted, after undergraduate admissions standards were put into place Fall 2013. |
| CORE | Indicates whether or not (Yes/No) a class is part of the Common Core requirements for undergraduate programs. |
| CORECOMPONENT | For classes that are part of the core, it indicates which core component (English, Math, Science, etc.) it satisfies. |
| COURSE | Subject and Course Number combined into one field(ex.MATH0300) |
| COURSEFEES | Fees charged to certain courses to offset the additional costs of conducting the class (mostly materials & equipment). As a <i>dimension</i> it displays the course fee associated with the class (0 if no course fee). As a <i>measure</i> it is calculated as the paid enrollment * course fee per student. |
| COURSEINFORMATION | Area that displays data by specific groups of courses (e.g., college or campus) using snapshots and analytics established for courses |
| COURSE INFORMATION- COURSEANALYTICS | Tab within Course Information displaying data as selected on Input Parameter tab. Can further drill down using dimensions and measures to display greater detail |
| COURSE INFORMATION-INPUT PARAMETERS | Tab within Course Information that initially extract groups by record set (i.e., current or official), comparison method (e.g., fall to fall), term, college, campus, session and delivery/instructional mode |
| COURSE INFORMATION- COURSESNAPSHOT | Multiple course views in graph form. Ability to drill down and display graphs of additional groups in detail |
| COURSECOUNT | Number of CRNs |
| COURSEDIV | Calculated value that defines lower, upper and graduate divisions for courses |
| COURSEDIVUG/GR | Calculated value that splits courses into undergraduate and graduate courses |
| COURSEHOURS | Number of credit hours per course |
| COURSE LEVEL | Defines courses levels by classification (e.g., freshmen, sophomore, junior, senior, graduate) for courses |
| COURSENUMBER | Course number at the catalog level (not including course subject). 1 st digit signifies level and 2 nd digit signifies number of semester credit hours of course |
| COURSESTATUS | The status of a course (active, cancelled, temporarily closed) |

| | |
|--------------------------------|--|
| CR_HR | Number of credit hours for each course |
| CREDITHOURS | Number of total credit hours taken by each student |
| CREDITEDHOURS | Sum of all credit hours taken by specific groups of students (e.g., by major) |
| CRN | Course Reference Number. Five-digit course reference number assigned to each unique section of a course. |
| CROSS_LISTED_GROUP | Courses/sections that are taught together at the same time in the same room and by the same instructor |
| CUBE | Map Builder containing Dimensions for a Data block |
| CURRENTCOLLEGE | Dimension that shows the academic college that the course/student belongs to, based on the current structure at UHD, allowing for longitudinal data to show the courses/students in the current structure |
| CURRENTDEPARTMENT | Dimension that shows the academic department that the course/student belongs to, based on the current structure at UHD, allowing for longitudinal data to show the courses/students in the current structure |
| CURRENTENROLLMENT | Number of students (duplicated headcount) attending UHD at any given point in time (based upon enrollment in each course in a student's schedule) |
| DATABLOCK | A searchable collection of data grouped by general categories (e.g., Course Information) |
| DAYSPERWEEK | Number of CRN class meetings per week |
| DECISION | Status assigned to a student applicant approving or denying admission |
| DECISIONDATE | Date when a decision was made on an applicant's record |
| DECISIONGROUPING | Status assigned to a student applicant combined into categories needed for Admissions Reporting |
| DEGREEPURSUING | Undergraduate or graduate degree being pursued |
| DELIVERY MODE | Medium by which instruction is delivered |
| DEPARTMENT | UHD academic divisions that offer course and academic programs by disciplines. Housed within colleges |
| DEVELOPMENTAL | Courses include: MATH 0300, MATH 1300, RDG 1300 and ENG 1300 |
| DEVELOPMENTAL ACADEMICSTANDING | Indicates a student's academic standing based on developmental coursework (if required) |
| DEVL CRSEIND | Indicates if a student took a developmental course in the term admitted |

| | |
|--|--|
| DIMENSION | Characteristics that represent attributes of a single group or a combination of groups within a data block |
| DRILL-DOWN | Ability to see a specific piece of data in greater detail |
| EARLY COLLEGE HIGH SCHOOL | A yes/no indicator that an applicant is coming to UHD from an Early College High school |
| ENROLLMENT INFORMATION | Area that displays data by specific enrollment groups (e.g., college enrollments by gender) using snapshots and analytics established for enrollment. |
| ENROLLMENT INFORMATION- ENROLLMENTANALYTICS | Tab within Enrollment Information displaying data as selected on Input Parameter tab. Can further drill down using dimensions and measures to display greater detail |
| ENROLLMENT INFORMATION- INPUTPARAMETERS | Tab within Enrollment Information that initially extract groups by record set (i.e., current or official), comparison method (e.g., fall to fall), term, student type, college, major and level |
| ENROLLMENT INFORMATION- MULTI-TERM ENROLLMENT SNAPSHOT | Multiple student enrollment views in graph form using multiple terms. Ability to drill down and display graphs of additional groups in detail |
| ENROLLMENT INFORMATION- ENROLLMENTSNAPOSHOT | Multiple student enrollment views in graph form for a single term. Ability to drill down and display graphs of additional groups in detail |
| ENROLLEDSEIZERANGE | Number of students in the course broken into ranges, based on actual enrollment |
| ETHNICITY | Self-reported race/ethnicity information for students. Beginning in Fall 2010 the question was split into a two-question format. The information is recoded back to one item to enable comparison across time. |
| EXECUTIVE DASHBOARD | Area that displays high-level, at-a-glance and daily detail data using multiple terms for applicants, financial aid, headcount, semester credit hours, registered and paid students. |
| EXECUTIVE DASHBOARD- STATISTICS | Tab within Executive Dashboard that displays applicant, student, graduate student and financial aid statistics by term(s) |
| EXECUTIVEDASHBOARD- DAILY SUMMARYCHARTS | Tab within Executive Dashboard that displays a daily comparison of headcount and semester credit hour progression by term(s) in graphical form |

| | |
|----------------------------------|--|
| EXECUTIVE DASHBOARD- DAILYDETAIL | Tab within Executive Dashboard that displays a daily comparison of registered and paid duplicated headcount and semester credit hour progression by term(s) in tabular form |
| FA AWRD | Number of students who have had financial aid offered to them |
| FAPSTD | Number of students who have accepted financial aid awards offered to them |
| FA_OFF | The number of individuals who have been presented with an aid package by financial aid office. This number includes anyone offered aid, regardless of enrollment status. |
| FILTER | Include/exclude specific values or groups from query |
| FINAIDAPPLICANT | An applicant/student who is seeking financial aid. |
| FINAIDRECIP | An applicant/student who is awarded financial aid |
| FIRST ENROLLTERM | First term a student is enrolled at UHD |
| FIRST GENERATIONCOLLEGE | Indicator of if a student is a first generation college student, using definition that both parents have less than a baccalaureate degree. |
| FIRST / LASTATTEMPT | Indicator that lets a person choose if they want to limit selection to only the first attempt (earliest), last attempt (latest), or all attempts at a given course that a student has made. |
| FIRSTTIMETAKERS | Students who are taking a course for the first time |
| FIXEDTUITION | Indicates if a student is part of the fixed rate tuition plan (started Fall 2014) |
| FRIDAY | Fifth weekday |
| FT ORPT | Full or part time students |
| FUNDINGCODE | Code assigned to course based on course content, determines formula funding level from the state |
| GATEKEEPER | Indicates if a student took a gatekeeper course in the term admitted. ENG 1302, HIST 1305 and MATH 1301 are the gatekeeper courses (these courses are identified as bottleneck courses for UHD's Quality Enhancement Plan(QEP) |
| GATOREMAIL | UHD assigned email address |
| GENDER | Male, Female or Unknown |
| GMATRANGE | Test score ranges on GMAT test for graduate applicants |
| GRE QUANTRANGE | Test score ranges on GRE Quantitative test for graduate applicants |
| GRE QUANT RANGE(NEW TEST) | Test score ranges on new GRE Quantitative test for graduate applicants |
| GRE VERBALRANGE | Test score ranges on GRE Verbal test for graduate applicants |

| | |
|----------------------------|---|
| GRE VERBAL RANGE(NEW TEST) | Test score ranges on new GRE Verbal test for graduate applicants |
| GPA UHDCUMUL | UHD student GPA using all UHD courses taken, split into ranges |
| GPA UHDTERM | UHD student GPA using UHD courses taken in specific semester (term) |
| GRADE | Letter grade in course designating how a student performed in course |
| GRADE_C_OR_BETTER | Number of students receiving grade of A, B or C in a course |
| GRADE_D | Number of "D" grades issued in a course |
| GRADE_FAILED | Number of "Failed" grades issued in a course |
| GRADE_INCOMPLETE | Number of "Incomplete" grades issued in a course |
| GRADE_OTHERS | Number of "Other" grades issued in a course (including S, U, Audit) |
| GRADE_WITHDRAW | Number of "Withdrawn" grades issued in a course |
| GRADRATE | Indicates how long (in years) it took a student to graduate |
| GRAD TUITIONEXEMPT | Grad Tuition Exemption FY 14 & 15: Students enrolled in graduate classes prior to Fall 2013, exempt from new designated and premium rates, only for FY 2014 and 2015. |
| GRADUATED | Data query returns "Y/N" which indicates if a student earned a degree from UHD |
| GRADUATEDDATE | The confer date of a student's degree |
| GRADUATED TERM | The term that the student earned a degree |
| HAVEHOLD(S) | Indicate whether or not an Applicant or Student has holds on their record (some holds prevent registration) |
| HAVEWADVAPP | Student/Applicant has course approvals made by advising (required for undeclared students, not required for declared majors) |
| HEADCOUNT | Unduplicated or duplicated count of students |
| HIGHSCHOOL | High school where applicant/student attended |
| HSGPA | High School GPAs are included as received from the high schools (NOT on a common scale) |
| HSRANK | Rank within high school graduating class converted into a percentile |
| INPUTPARAMETER | A set of elements used as a base to define search criteria |
| INSTRUCTOR | Instructor name |
| INSTRUCTOR FT ORPT | Status is determined by rank. Adjuncts and special faculty are part-time; all other ranks are full-time |
| INSTRUCTORRANK | One of 12 instructor hierarchy designations at UHD |

| | |
|-----------------------------------|---|
| INSTRUCTOR TENURE | Tenure status of faculty teaching the course |
| LEVEL | Level at which applicant is applying (undergraduate or graduate) |
| LOAD APPLICANT INFORMATION | Function that retrieves and loads data into applicant analytics |
| LOADAPPLICANT SNAPSHOT FORM | Function that retrieves and loads data into applicant graphical views |
| LOADCOURSEINFORMATION | Function that retrieves and loads data into course analytics |
| LOADCOURSESNAPSHOT | Function that retrieves and loads data into course graphical views |
| LOAD ENROLLMENT INFORMATION | Function that retrieves and loads data into enrollment analytics |
| LOAD ENROLLMENT SNAPSHOT | Function that retrieves and loads data into enrollment graphical views using a single term |
| LOADMULTI-TERM ENROLLMENTSNAOSHOT | Function that retrieves and loads data into enrollment graphical views using multiple terms |
| MAJOR | Field of study |
| MAJOR_CONC | Major Concentration—a more specialized field of study within a major (e.g., Interdisciplinary Studies is a major, Interdisciplinary Studies in Bilingual EC-4 is a major concentration) |
| MAX_ENROLLMENT | Maximum registrations set for each CRN |
| MAX_XLINK_ENROLLMENT | Maximum registration set for a cross listed group of CRNs (if class not cross listed is zero), may be lower than MAX_ENROLLMENT of individual CRNs |
| MAXIMUM ENRLMT | Maximum registrations set for each CRN |
| MEASURE | Comparisons to denote various statistical quantitative and qualitative displays (e.g., by value, column vs. row) |
| MEASURE MANAGER | Houses display choices within each Measure of a Data block |
| MEETING DAYS | Course section meeting patterns using days of the week, combined into one field (e.g., M, MW, MWF) |
| MINOR 1 AND MINOR2 | Declared minor field of study |
| MITC | Multi-institutional teaching centers where different colleges/universities offer courses |
| MONDAY | First weekday |

| | |
|---------------------|---|
| MS CJ ONLINEPROGRAM | Indicates if an applicant has expressed interest (on Apply Texas) in pursuing the MS in Criminal Justice degree in the online format. |
| NAME | Name of applicant/student (last, first middle) |
| NEW TSI ESSAY | Score ranges of new TSI score, introduced Fall 2013 |
| NEW TSI MATH | Score ranges of new TSI score, introduced Fall 2013 |
| NEW TSI READING | Score ranges of new TSI score, introduced Fall 2013 |
| NEW TSI WRITING | Score ranges of new TSI score, introduced Fall 2013 |
| OFFICIALRECORDSET | The official record set is based on data as of 20th day of the full term. This record set includes student and course enrollments in the full term, as well as the Parts of Term that start at the same time as the full term (example: First 8-week). |
| OPENSECTIONS | Course sections that are still available for registrations because the maximum enrollment has not been met |
| OPEN_CLOSE_IND | Designation indicating sections that are open (maximum enrollment has not been met and is available to accept registrations) or closed (maximum enrollment has been met and is no longer available for registration) |
| ORIENTATION | Indicates whether or not an applicant/student attended New Student Orientation |
| PAID | Indicates if students (duplicated headcount) have paid registrations. Values include: Y, N or C ("C" indicates registration is temporarily saved but not paid. These registrations will be purged if payment is not received by the 20th class day and the "C" updated to "Y"); in Executive Dashboard it is an unduplicated headcount of paid students |
| PAID SCH | Paid Semester Credit Hours. New field will not show data prior to November 2012 |
| PAIDSTUDENTS | Number of students (duplicated headcount) who no longer owe a balance for registrations |
| PART OF TERM | Designation of what session a class is taking place in (examples: first 4- week, first 8-week, full term) Note: First used in Spring 2012 |
| PART OF TERM 1 | Number of credit hours a student is enrolled in taking place in the full length semester. Note: First used in Spring 2012 |
| PART OF TERM 41 | Number of credit hours a student is enrolled in taking place in the first 4- week term of the semester. Note: First used in Spring 2012 |

| | |
|----------------------|---|
| PART OF TERM42 | Number of credit hours a student is enrolled in taking place in the second 4- week term of the semester. Note: First used in Spring 2012 |
| PART OF TERM43 | Number of credit hours a student is enrolled in taking place in the third 4- week term of the semester. Note: First used in Spring 2012 |
| PART OF TERM44 | Number of credit hours a student is enrolled in taking place in the fourth 4-week term of the semester. Note: First used in Spring2012 |
| PART OF TERM81 | Number of credit hours a student is enrolled in taking place in the first 8- week term of the semester. Note: First used in Spring 2012 |
| PART OF TERM82 | Number of credit hours a student is enrolled in taking place in the second 8- week term of the semester. Note: First used in Spring 2012 |
| PELLRECIPIENT | "Y/N" indicator designating a student as being a PELL Grant (need-based award) recipient |
| PERSONALEMAIL | Personal email address, as provided by applicant/student |
| PHONENUMBER | 'Landline' telephone number as provided by applicant/student |
| PREVCOLLEGE | Most recent college where applicant was previously enrolled |
| PREV COLLEGE LEVEL | Level (2 year, 4 year) of most recent college where applicant was previously enrolled |
| PREV COLLEGE CONTROL | Control (public, private) of most recent college where applicant was previously enrolled |
| PROGRAM | Student or applicant designated major and degree combination. This field will also indicate if a student is not seeking a degree from UHD (Program=NON_DEGR) or if a student has been admitted to a college but not yet declared a major(BU_BBA) |
| RECORDSET | Use of official or current records for query. Official data is of 12thclass day, or certified 20th class day data. After 20th day, no longer refreshes. Current data refreshes every morning with current data. Not available for Applicant Information |
| RECRUITTYPE | Indicates the source of the application |
| REG | Headcount of Registered Students |
| REGISTER | Indicates whether or not an applicant is registered as a student at UHD (Y/N) |
| REG SCH | Registered Semester Credit Hours. New field will not show data prior to November 2011 |

| | |
|-------------------------------------|--|
| REGHRSDOWNTOWN | Number of student registered hours (not paid hours) per term for any course taught at the Downtown location |
| REGHRS ISDS | Number of student registered hours (not paid hours) per term for any course taught at Independent School District locations |
| REGHRSLSCATASCOCITA | Number of student registered hours (not paid hours) per term for any course taught at the Lone Star College Atascocita location |
| REGHRSLSCCYFAIR | Number of student registered hours (not paid hours) per term for any course taught at the Lone Star College Cy-Fair location |
| REGHRSLSCKINGWOOD | Number of student registered hours (not paid hours) per term for any course taught at the Lone Star College Kingwood location |
| REGHRS LSC KINGWOOD INCLUDINGONLINE | Number of student registered hours (not paid hours) per term for any course taught at either: 1) the Lone Star College Kingwood location or 2) taught online that support the programs offered at Lone Star College Kingwood location (Courses with campus = 7). Is the sum of two dimensions: RegHrs LSC Kingwood + RegHrs LSC Kingwood Online |
| REGHRS LSC KINGWOOD ONLINE | Number of student registered hours (not paid hours) per term for any course taught online that support the programs offered at Lone Star College Kingwood location (Courses with campus = 7). Classes first coded this way in 2016 |
| REGHRS ONLINE | Number of student registered hours (not paid hours) per term for any course taught online with the location code, "Online", rather than a physical location |
| REGHRSONLINEINCLUDING UHD NWONLINE | Number of student registered hours (not paid hours) per term for any course taught online, including those taught online that support the programs offered at UHD Northwest location (Courses with campus =8). Is the sum of two dimensions: RegHrs UHD Online + RegHrs UHD NW online |
| REGHRSOOTHERS | Number of student registered hours (not paid hours) per term for any course taught at any location other than what is listed individually (e.g., UH, TUC at The Woodlands, UHS Cinco Ranch, tape course, etc.) |
| REGHRS UHDNW | Number of student registered hours (not paid hours) per term for any course taught at the UHD Northwest (Lone Star College - University Park) location. |

| | |
|-------------------------------------|---|
| REGHRS UHD NWINCLUDING UHD NWONLINE | Number of student registered hours (not paid hours) per term for any course taught at either: 1) the UHD Northwest (Lone Star College - University Park) location 2) taught online that support the programs offered at UHD Northwest location (Courses with campus=8). Is the sum of two dimensions: RegHrs UHD NW + RegHrs UHD NW online |
| REGHRS UHD NWONLINE | Number of student registered hours (not paid hours) per term for any course taught online that support the programs offered at UHD Northwest (Lone Star College – University Park) location (Courses with campus = 8). Classes first coded this way in Spring 2013. |
| REMEDIALIND | Indicates if a student took a remedial course in the term admitted. |
| REMEDIAL | To correct or improve deficient skills. Courses taken should a student fail Developmental courses. |
| REPEAT UHDCOURSE | Indicator (Yes/No) about whether or not a student has repeated a course at UHD, including if repeating a course in the currently enrolled term |
| REPEAT TRANSFERCOURSE | Indicator (Yes/No) about whether or not a student has repeated a course that is transferred into UHD from another institution, repeating is looked at across all other institutions. |
| ROOM | Location where a course is taught |
| RESIDENCY | Pertains to in-state vs. out-of-state for resident and tuition level purposes |
| SATCOMPOSITE | College entrance exam. Composite score is comprised of Critical Reading and Math scores. <i>Note: Test Scores were not required for admission until 2011. If multiple scores are submitted, the highest is brought into eIntelligence</i> |
| SATMATH | SAT component test |
| SATVERBAL | SAT component test, now called Critical Reading |
| SATWRITING | SAT component test |
| SATURDAY | Last day of week. One of two weekend days |
| SCHEDULETYPE | The primary type of instruction used in a course (e.g., lecture, lab, seminar, etc.) |
| SCHOLARSACADEMY | Indicator of whether or not a student is a member of UHD Scholars Academy |

| | |
|-------------------------|--|
| SESSION | Pertains to time of day or week when section is offered (e.g., day, night, virtual) |
| SITE | A code assigned to students who are interested in taking classes primarily at one of our off-site locations or who are online only. "Unassigned" for many of our students. |
| SIX YEAR GRADUATIONRATE | Indicates the term by which a student must graduate to be counted in the six year graduation rate, populated only for those who start as full-time FTIC students. |
| STATE | State as listed on student's mailing address |
| STUCOUNTINGMETHOD | Student Counting Method. Options listed: All attempts (duplicated) or Only latest course taken by student |
| STU CREDHRS | Number of attempted student credit hours |
| STUDENT LEVEL | Level at which student is enrolled (undergraduate, graduate) |
| STUDENTTYPE | Student categories that indicate initial admission and the subsequent student status |
| STUDENTTYPEGROUPING | Student types combined into categories needed for Enrollment Reporting |
| SUBJECT | Course subject code for disciplines/instructional areas |
| SUNDAY | First day of week. One of two weekend days. (designated "U") |
| TAB | A tag or label displayed across the top of the display that navigates to another area in one click |
| TERM | UHD semester (201020 = Spring2010) |
| TERM DECLARED | Term that an applicant member of a cohort first declared a major |
| TERM1REG | Indicator of whether or not enrolled the semester selected (shows as Y- term or N-term with term being the term selected) |
| TERM2REG | Indicates whether or not an applicant enrolled in the next long semester (fall, spring) after the term for which they applied. Ex. Applicant term is Fall 2008, indicates whether or not enrolled Spring2009 |
| TERM3REG | Indicates whether or not an applicant enrolled in the third long semester (fall, spring) after the term for which they applied. Ex. Applicant term is Fall 2008, indicates whether or not enrolled Fall 2009 |
| TERM4REG | Indicates whether or not an applicant enrolled in the fourth long semester (fall, spring) after the term for which they applied. Ex. Applicant term is Fall 2008, indicates whether or not enrolled Spring2010 |

| | |
|-----------------|---|
| TERM6REG | Indicates whether or not an applicant enrolled in the sixth long semester (fall, spring) after the term for which they applied. Ex. Applicant term is Fall 2008, indicates whether or not enrolled Spring2011 |
| TERM8REG | Indicates whether or not an applicant enrolled in the eighth long semester (fall, spring) after the term for which they applied. Ex. Applicant term is Fall 2008, indicates whether or not enrolled Spring 2012 |
| TERM10REG | Indicates whether or not an applicant enrolled in the tenth long semester (fall, spring) after the term for which they applied. Ex. Applicant term is Fall 2008, indicates whether or not enrolled Spring2013 |
| TERM12REG | Indicates whether or not an applicant enrolled in the twelfth long semester (fall, spring) after the term for which they applied. Ex. Applicant term is Fall 2008, indicates whether or not enrolled Spring2014 |
| THURSDAY | Fourth weekday (designated "R") |
| TIME | Time at which the data snapshot was taken(Executive Dashboard) |
| TRANSFER | Indicates transfer student, based on if they have transfer hours articulated. |
| TSI Status | An applicant/student's status (complete, exempt, not complete) related to the Texas Success Initiative(TSI) |
| TUESDAY | Second weekday |
| UGGPA | Bachelor degree GPA ranges of applicants, from UHD or transfer institution |
| XLINKENROLLMENT | Enrollment in a set of CRNs that are cross listings of the same class. If a class is NOT cross listed the enrollment for that class is used in this dimension |
| WEDNESDAY | Third weekday |
| WPE INDICATOR | Indicates if Writing Proficiency Exam has been completed. |
| ZIPCODE | Five digit number zip codes used in Enrollment Information area |
| ZIPLOCATION | Zip code groupings (not by 5-digit zip codes) used in Applicant, Applicant Cohort and Enrollment Information areas |

