

EAB Introduction to Institution Reports

Institution Reports provide insights into historical patterns of student performance at your institution, with a special focus on factors impacting graduation. Deans and program leaders can use them to find opportunities to impact student success, either through direct student intervention or by changing curricula or advising programs.

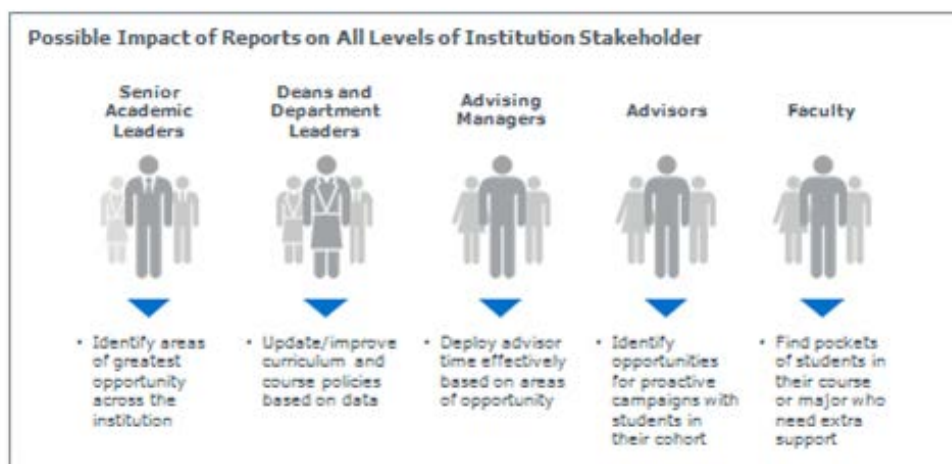
Navigate acquires up to 10 years of historical data to build the reports. We then cleanse it and load it into Navigate. The reports can be configured based on institution preferences (e.g. including transfer students).

The historical trends Navigate provides have evolved over time. We began with raw data used to identify "success marker" courses, moved to Excel-based workbooks with several available insights, and now this interactive, web-based application with different report categories.

The data is meant to help different stakeholders understand the opportunities for improvement in student success. It can also rally colleagues around those opportunities and guide decisions on how to use available tools to take action.

We created each report with a specific purpose. Each Institution Report may differ in format and data from other Navigate reports.

These articles will help you locate and navigate the reports. They will also share the insights from each report, common data definitions, and the FAQ.



For additional support, visit https://uhdforms.formstack.com/forms/eab_help_form