



UHD University of Houston
DOWNTOWN.

One Main Complex Programming

Table of Contents

Scope of Work

Phases of the Project:

- Phase 1
- Phase 2
- Phase 3
- Phase 4
- Phase 5
- Phase 6
- Phase 7
- Phase 8

Standard Room Configuration

MOCA

- Mechanical / Plumbing Design Considerations
- Fire Protection Analysis
- Electrical Analysis
- Walter P. Moore Structural Report
- Photos

Infrastructure and Associates

- Thermal/Hydraulic Study

UHD One Main Complex Project Scope of Work

UHD will utilize the State for the Capital Construction Assistance Projects to build the 4th floor of the Welcome Center, renovate 3rd floor of the Welcome Center, and renovate spaces within the One Main Building to address programming problems.

The Welcome Center would become the new home of student support/success programs and services, including Registrar, Financial Aid, Cashier, Enrollment Management, Transfer Relations, Student Accounting, and large seminar rooms. The build-out of the Welcome would also enhance campus safety/security by containing evening and weekend activity in the more controlled space of the Girard Street Building. The project will encompass 33,832 sq/ft of new space and renovation of 9,000 sq/ft of the 3rd floor of the Welcome Center. This project will also renovate 64,843 sq/ft of space in the One Main building.

The project will be in eight phases.

The **First phase** will be the buildout of for the Testing Center, Academic Support Center in their perminate space and *the creation of Swing Spaces in the old Student Life Center and Pump Station to support Phase 2 (UHD In-House).*

The **Second phase** will add the 4th floor to the Welcome Center and renovate a part of the 3rd floor.

The **Third phase** will renovate the spaces on the 3rd floor of the One Main building that was vacated by the areas that moved to the Welcome Center.

The **Fourth phase** will renovate the North 8th floor of One Main to receive Geology from the 9th floor of One main building and the Physics department from the South 8th floor of One Main to the North 8th floor of One Main Building.

The **Fifth Phase** will renovate the South 8th floor of One Main to receive the OIT shops from Academic 7th floor.

The **Sixth Phase** will buildout parts of the Academic 7th floor to receive the Arts labs from North 8th floor of the One Main building and the Labs for the 10th floor of the One Main Building.

The **Seventh Phase** is to buildout North 9th floor of One Main building for University Relations and the Provost Office. They will move from South 9th floor to North 9th floor. Also, Events will move from North 6th floor to North 9th floor.

The **Eighth Phase** is to buildout South 3rd floor of the one main building for Student Success & Student Life (SSSL).

LEGEND

RELOCATE TO				RELOCATE FROM			EXISTING ROOM COUNT															
BLDG	FLOOR	SQ.FT.	COLOR	DEPT	BLDG	FLOOR	SQ.FT.	RECEPT. AREA	OFFICES	CUBICLES	CONFER. ROOM	WORK STATION (OPEN)	COMPUTER LAB	CLASS ROOMS	LABS.	HUDDLE RM. (cubicle)	BRK. RM	STOR.	COPY AREA	LOUNGE	STUDY ZONE	LOCKER AREA
OMB	05	5,323	Green	LARGE TESTING ROOM	GSB	03	4,566	1	4	-	1	-	-	-	-	-	.5	1	.5	-	-	1
OMB	05	3,555	Blue	ACADEMIC SUPPORT CENTER	OMB	09	6,607	-	-	4	1	2	(31 comp)	-	-	7	.5	1	.5	-	3(67 seats)	-
OMB	05	194	Red	IT (IDF)	OMB	03	128	-	-	4	1	2	(31 comp)	-	-	7	.5	1	.5	-	3(67 seats)	-

OBJECTIVE: THIS WILL BE THE BUILDOUT OF THE PERMINATE SPACE FOR THE TESTING CENTER AND THE ACADEMIC SUPPORT CENTER. THEY BOTH WILL BE WHICH WILL PERMANENTLY BE ON THE 5TH FLOOR OF ONE MAIN. THIS WILL ALSO BE THE TEMPORARY RELOCATION OF THE ADMISSIONS, DISABILITY SERVICES, VETERAN SERVICES, AND THE GALLERY TO THE STUDENT LIFE CENTER AND THE PUMP STATION.

SCOPE:

STUDENT SUCCESS & STUDENT LIFE

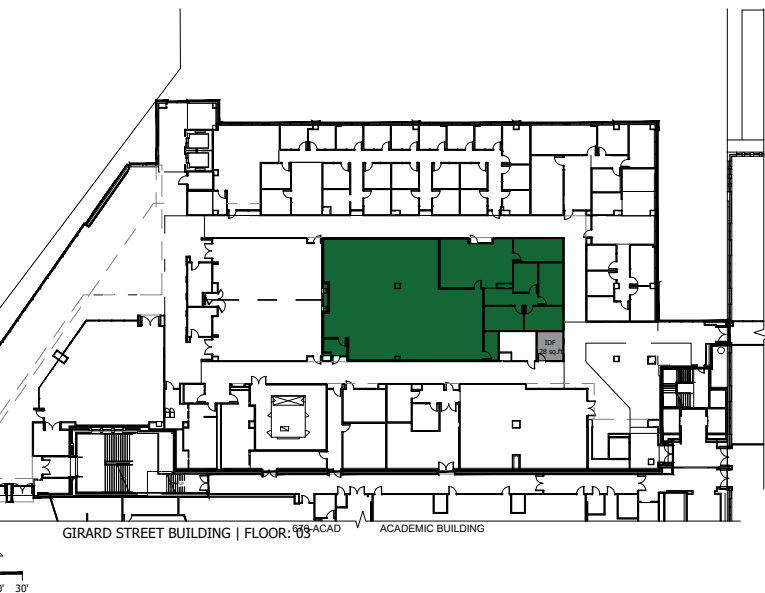
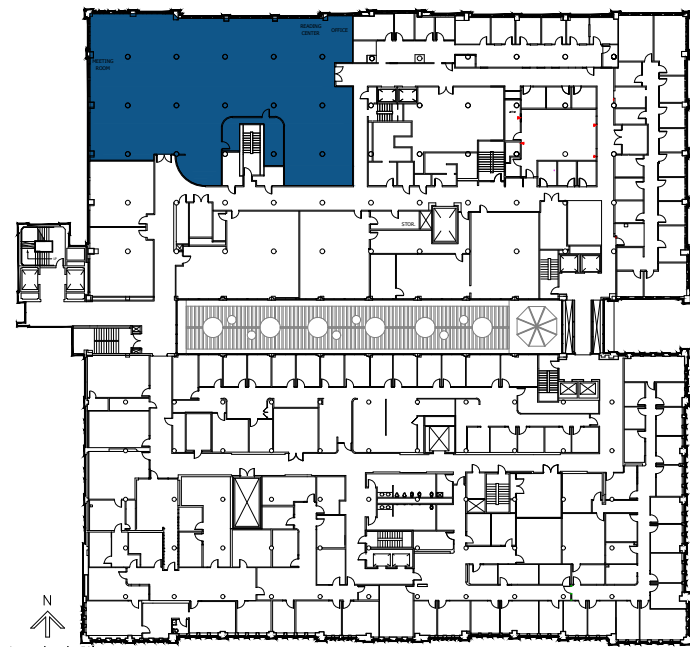
TESTING CENTER

THE TESTING CENTER WILL BE RELOCATED FROM THE 3RD FLOOR OF THE WELCOME CENTER TO THE SOUTH 5TH FLOOR OF THE ONE MAIN BUILDING. THE SPACE THEY ARE MOVING FROM IS 4,542 SF. THE NEW SPACE WILL BE 7,583 SF. IT WILL CONSIST OF SIX (6) OFFICES, FIVE (5) **OFFICE 120 SF PRIVATE** AND ONE (1) **EXECUTIVE OFFICE**, 300 SF LOCKER SPACE, 600 SF RECEPTION AREA, 400 SF STORAGE AND 4,000 SF TESTING AREA.

ACADEMIC SUPPORT CENTER

THE ACADEMIC SUPPORT CENTER WILL BE RELOCATED FROM THE 9TH FLOOR OF THE ONE MAIN BUILDING TO THE SOUTH 5TH FLOOR OF THE ONE MAIN BUILDING. THE SPACE THEY ARE MOVING FROM IS 8,212 SF. THE NEW SPACE WILL BE 7,350 SF. IT WILL CONSIST OF SIX (6) OFFICES **OFFICE 120 SF PRIVATE**, 600 SF RECEPTION AREA AND 5,600 SF OF OPEN COMPUTER AREA.

IDF expansion required on each wing



01 EXISTING LAYOUT
SCALE: NTS

02 PROPOSED LAYOUT - ONE MAIN BUILDING | FLOOR: 05
SCALE: NTS

PROJECT NAME:

ONE MAIN COMPLEX PROGRAMMING (PHASE 1A)

DRAWN BY: INITIALS

REVIEWED: INITIALS

START DATE: XX/XX/XX

LAST UPDATED: 9/27/2023

BUILDING/FLOOR:

OMB/08+05

SHEET:

PHASE 1A

S P A C E
PROGRAMMING

OBJECTIVE:

THIS WILL BE THE BUILD-OUT OF THE PERMANENT SPACE FOR THE TESTING CENTER AND THE ACADEMIC SUPPORT CENTER. THEY BOTH WILL BE WHICH WILL PERMANENTLY BE ON THE 5TH FLOOR OF ONE MAIN. THIS WILL ALSO BE THE TEMPORARY RELOCATION OF THE ADMISSIONS, DISABILITY SERVICES, VETERAN SERVICES, AND THE GALLERY TO THE STUDENT LIFE CENTER.

SCOPE:

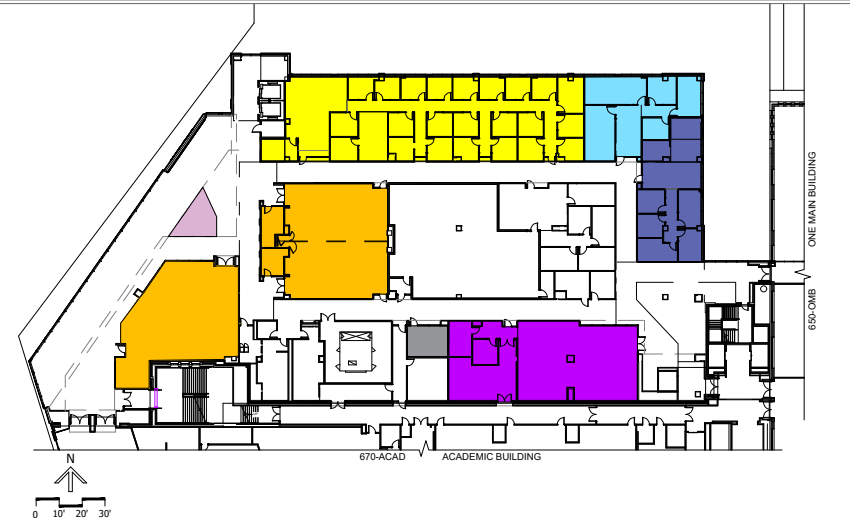
TEMPORARY RELOCATION:

ADMISSIONS, DISABILITY SERVICES, VETERAN SERVICES, AND THE GALLERY

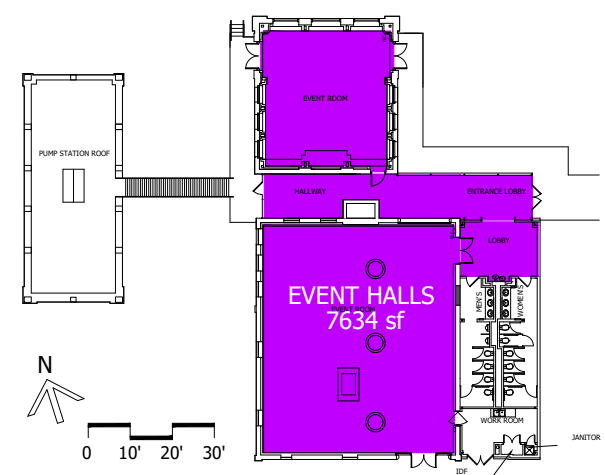
THE ADMISSIONS, DISABILITY SERVICES AND VETERAN SERVICES WILL BE TEMPORARILY RELOCATED FROM 3RD FLOOR OF THE WELCOME CENTER TO THE STUDENT LIFE CENTER. THE GALLERY WILL LOCATE TO THE WILLOW STREET PUMP STATION, ADMISSIONS AND DISABILITY SERVICES TO THE EAST GYM, VETERAN SERVICES TO THE 2ND FLOOR. (UHD IN-HOUSE)

LEGEND

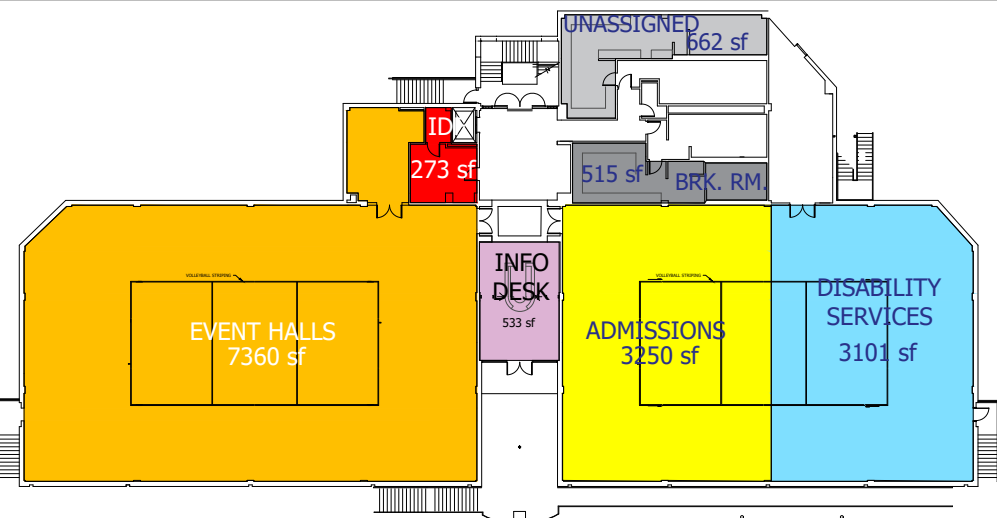
RELOCATE TO				RELOCATE FROM			EXISTING ROOM COUNT																
BLDG	FLOOR	SQ.FT.	COLOR	DEPT	BLDG	FLOOR	SQ.FT.	RECEPT.	OFFICES	CUBICLES	WORK STATION (OPEN)	COMPUTER LAB	CLASS ROOMS	LABS.	TESTING RM.	HUDDLE RM.	BRK. RM	STOR.	COPY AREA	LOUNGE	STUDY ZONE	LOCKER AREA	GALLERY
SLC	01	3,250	Yellow	ADMISSIONS	GSB	03	4,879	1	22	-	2	-	-	-	-	-	.5	1(M)	.5	-	-	-	-
SLC	01	273	Red	IDF	N/A	N/A	N/A	-	-	-	-	-	-	-	-	-	-	-	-	-	-	-	-
SLC	02	3,101	Cyan	DISABILITIES SERVICES	GSB	03	1,475	1	2	-	-	1(12 comp)	-	-	1?	-	1	1(M)	-	-	-	-	-
WSPS	01	4,290	Purple	O'KANE GALLERY	GSB	03	2,825	-	2	-	1	-	-	-	-	-	-	1(XL)	-	-	-	-	1
SLC	01	7,360	Orange	EVENTS HALL	GSB	03	4,615	-	-	-	-	-	-	-	-	-	-	2(M)	-	-	-	-	-
SLC	03	3,745	Blue	VETERAN SERVICES	GSB	03	1,576	1	3	-	-	1(x comp)	-	-	-	1	1	1(M)	-	1	1	-	-
SLC	01	515	Grey	BREAK ROOM (SHARED)	GSB	03	235	-	-	-	-	-	-	-	-	-	-	-	-	-	-	-	-
SLC	01	533	Pink	INFO DESK	GSB	03	250	-	-	-	-	-	-	-	-	-	-	-	-	-	-	-	-
SLC	01	3,616	Light Blue	UNASSIGNED	N/A	N/A	N/A	-	-	-	-	-	-	-	-	-	-	-	-	-	-	-	-
N/A	N/A	N/A	Yellow	TOUR ROOM	GSB	03	2,079	-	-	-	-	-	-	-	-	-	-	1(M)	-	-	-	-	-



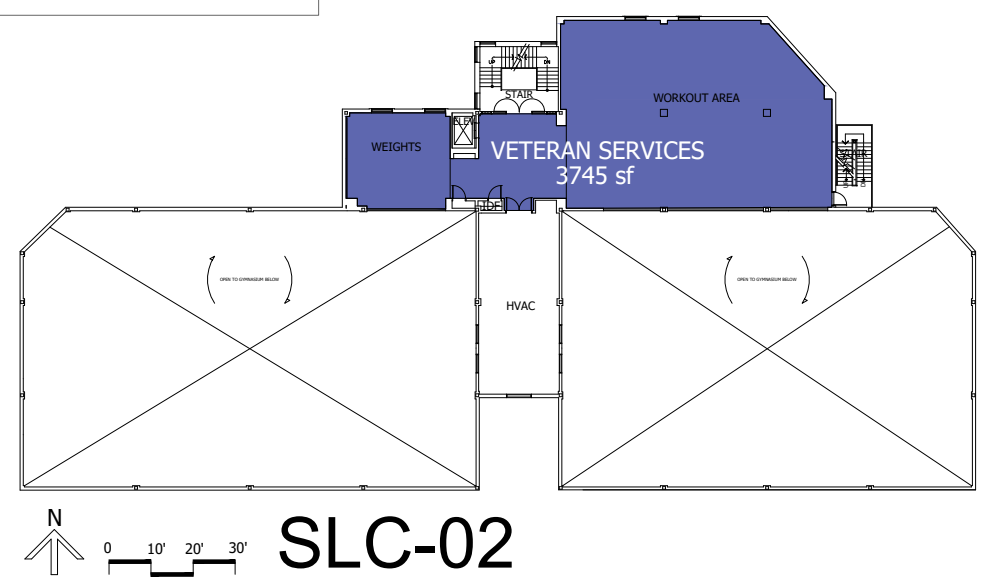
01 EXISTING LAYOUT - GSB 3RD FL
SCALE: NTS



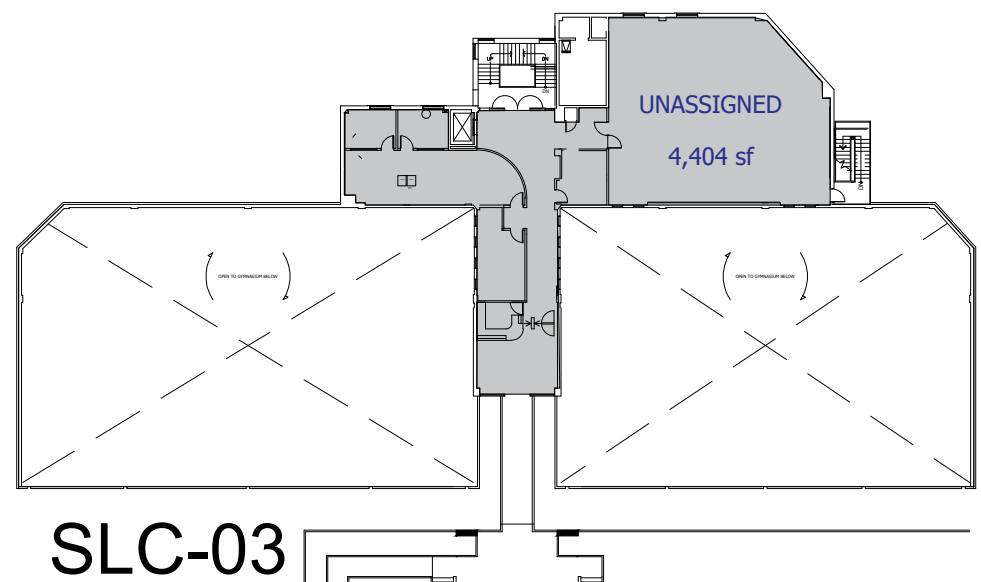
WSPS-01



SLC-01



SLC-02



SLC-03

02 PROPOSED LAYOUT
SCALE: NTS

9/27/2023 2:47:39 PM, UHD Facilities Management

Phase One:

This will be the buildout of the perminate space for the Testing Center and the Academic Support Center. They both will be which will permanently be on the 5th floor of One Main. This will also be the temporary relocation of the Admissions, Disability Services, Veteran Services, and the Gallery to the Student Life Center and the Pump Station.

Testing Center

The Testing Center will be relocated from the 3rd floor of the Welcome Center to the North 5th floor of the One Main building. The space they are moving from is 4,542 SF. The new space will be 7,583 SF. It will consist of six (6) offices, five (5) **Office 120 SF Private** and one (1) **Executive Office**, 300 SF Locker space, 600 SF reception area, 400 SF Storage and 4,000 SF Testing area.

Academic Support Center

The Academic Support Center will be relocated from the 9th floor of the One Main building to the South 5th floor of the One Main building. The space they are moving from is 8,212 SF. The new space will be 7,350 SF. It will consist of six (6) offices **Office 120 SF Private**, 600 SF reception area and 5,600 SF of open computer area.

Admissions, Disability Services, Veteran Services, and the Gallery

The Admissions, Disability Services and Veteran Services will be temporarily relocated from 3rd floor of the Welcome Center to the Student Life Center. The Gallery will locate to the Pump Station, Admissions to the East Gym, Veteran Services to the 2nd floor and Disability Services to the 3rd floor. (UHD In-House)

RELOCATE TO				RELOCATE FROM				EXISTING ROOM COUNT																
BLDG	FLOOR	SQ.FT.	COLOR	DEPT	BLDG	FLOOR	EXISTING SQ.FT.	RECEPT.	OFFICES	CUBICLES	WORK STATION (OPEN)	CONFR. ROOM	COMPUTER LAB	CLASS ROOMS	LABS.	TESTING RM.	HUDDLE RM.	BRK. RM	STOR.	COPY AREA	LOUNGE	STUDY ZONE	LOCKER AREA	GALLERY
GSB	03	4,880	Yellow	ADMISSIONS	SLC	01	3,250	1	22	-	2	-	-	-	-	-	-	.5	1	.5	-	-	-	-
OMB	03	4,560	Purple	REGISTRAR	OMB	03	3,555	1	2	-	2	-	1(12 comp)	-	-	-	-	1	1	-	-	-	-	-
GSB	03	3,075	Pink	GALLERY	WSPS	01	4,291-temp	-	2	-	2	-	-	-	-	-	-	1	1	.5	-	-	-	1
GSB	03	4,615	Orange	EVENTS HALL	SLC	01	7,634	-	-	-	-	-	-	-	-	-	-	-	2	-	-	-	-	-
GSB	03	3,058	Light Yellow	OFFICE OF ENROLLMENT MANGT. & TRANSFER RELATION, ORIENTATION	OMB	03	2,885	1	13	-	2	1	-	-	-	-	-	1	1	1	-	-	-	-

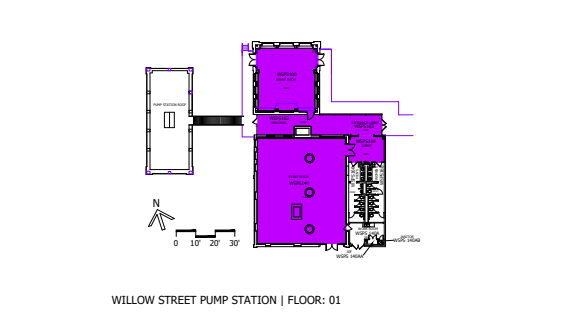
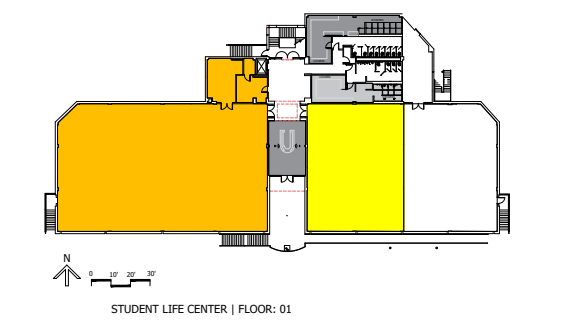
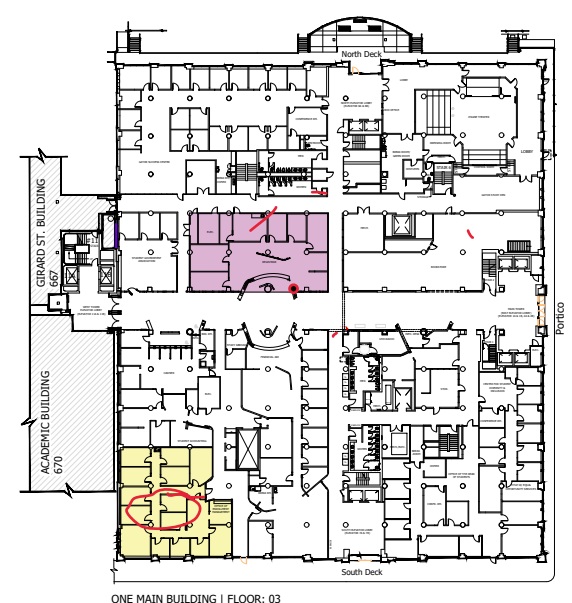
SPACE PROGRAMMING

OBJECTIVE:
THIS WILL BE THE ADDITION OF THE 4TH FLOOR OF THE WELCOME CENTER AND THE RENOVATION OF PARTS OF THE 3RD FLOOR TO SUPPORT THE ENHANCED STUDENT SUPPORT AND CAMPUS SAFETY/SECURITY. THIS WILL ALSO BECOME THE NEW HOME OF STUDENT SUPPORT/SUCCESS PROGRAMS AND SERVICES, INCLUDING REGISTRAR, FINANCIAL AID, CASHIER, ENROLLMENT MANAGEMENT, TRANSFER RELATIONS, STUDENT ACCOUNTING, AND LARGE MULTIPURPOSE ROOMS.

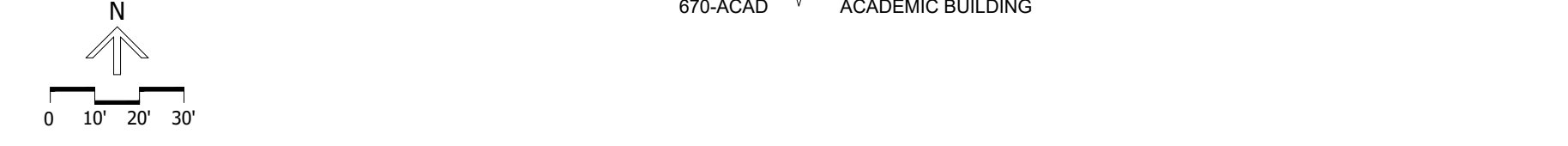
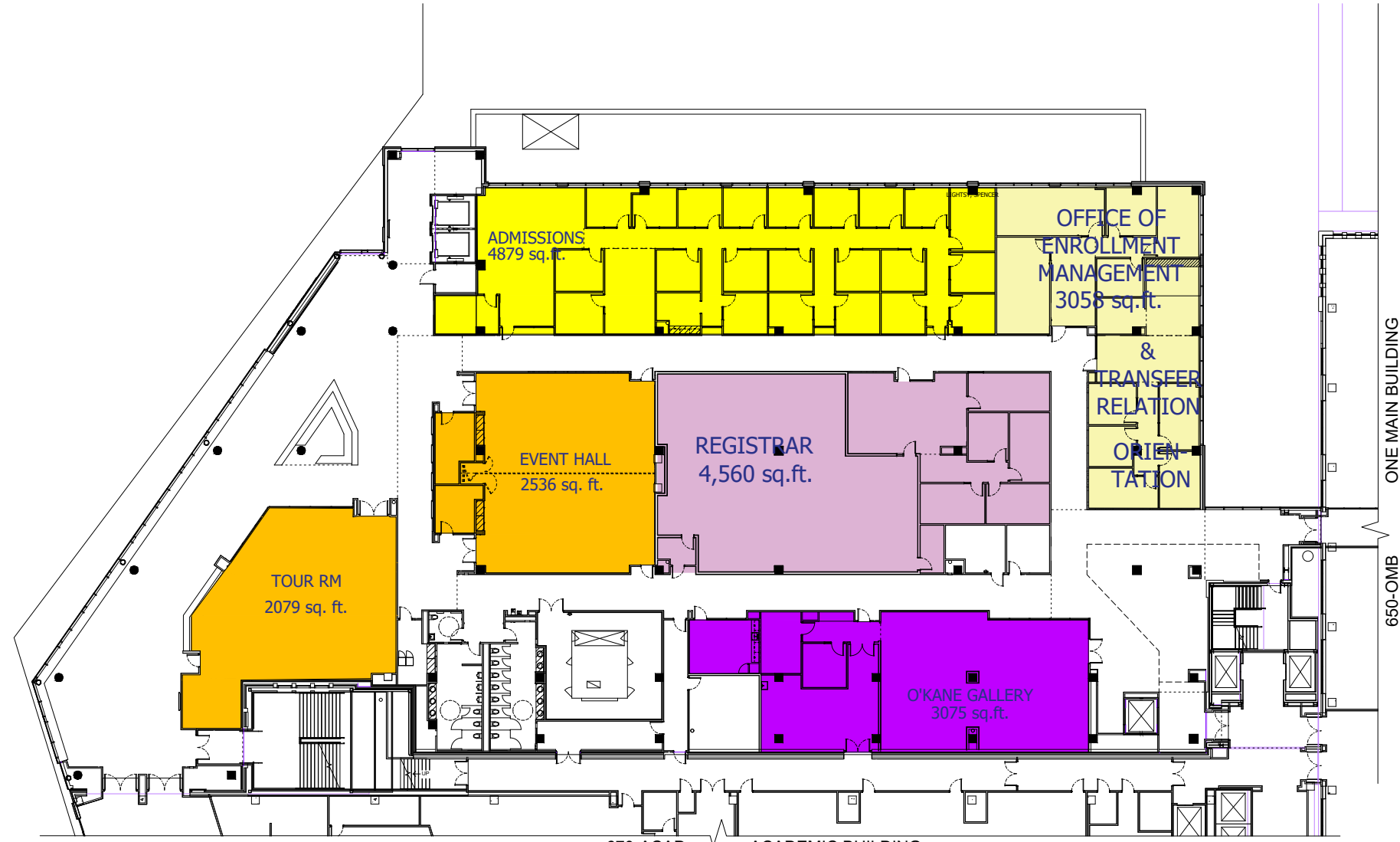
SCOPE:
ADMISSION/ O'KANE GALLERY/EVENT HALL WILL MOVE BACK TO LOCATION BEFORE CONSTRUCTION STARTED.

ENROLLMENT MANAGEMENT REGISTRAR
THE REGISTRAR WILL BE RELOCATED FROM THE 3RD FLOOR OF THE ONE MAIN BUILDING TO THE 3RD FLOOR OF THE WELCOME CENTER IN THE SPACE THAT TESTING HAS VACATED. THE SPACE THEY ARE MOVING FROM IS 3,555 SF. THE NEW SPACE WILL BE 4,560 SF. IT WILL CONSIST OF THIRTEEN OFFICES (13), ELEVEN (11) **OFFICE 120 SF PRIVATE ONE (1) VP OFFICE** AND ONE (1) **EXECUTIVE OFFICE**, ONE (1) **CONFERENCE ROOM 8 TO 15**, ONE (1) **LOUNGE 4 TO 8 /COPIER AREA**, ONE (1) **STORAGE ROOM** AND FOUR (4) SERVICE STATIONS.

ENROLLMENT MANAGEMENT/TRANSFER RELATIONS/ORIENTATION
ENROLLMENT MANAGEMENT/TRANSFER RELATIONS/ORIENTATION WILL BE MOVING FROM THE 3RD FLOOR OF THE ONE MAIN BUILDING TO THE 3RD FLOOR OF THE WELCOME CENTER IN THE SPACE DISABILITY SERVICES AND VETERAN SERVICES WERE IN. THE SPACE THEY ARE MOVING FROM IS 2,885 SF. THE NEW SPACE WILL BE 3,058 SF. IT WILL CONSIST OF FOURTEEN OFFICES, TWELVE (13) **OFFICE 120 SF PRIVATE** AND ONE (1) **EXECUTIVE OFFICE**, ONE (1) COPIER AREA, ONE (1) **STORAGE ROOM** AND THREE (3) SERVICE STATIONS.



01 EXISTING LAYOUT
SCALE: NTS



02 PROPOSED LAYOUT (GSB 03)
SCALE: NTS

SPACE PROGRAMMING

LEGEND

RELOCATE TO				RELOCATE FROM			EXISTING ROOM COUNT																	
BLDG	FLOOR	SQ.FT.	COLOR	DEPT	BLDG	FLOOR	SQ.FT.	RECEPT.	OFFICES	CUBICLES	WORK STATION (OPEN)	CONFR. ROOM	COMPUTER LAB	CLASS ROOMS	LABS.	TESTING RM.	HUDDLE RM.	BRK. RM	STOR.	COPY AREA	LOUNGE	STUDY ZONE	LOCKER AREA	GALLERY
SLC	01	2,112	[Blue]	VETERAN SERVICES	SLC	03	3,745-TEMP	1	3	-	-	-	1(x comp)	-	-	-	1	1	1(M)	-	1	1	-	-
OMB	04	6,705	[Orange]	FINANCIAL AID	GSB	03	4232	-	18	6	4	1	-	-	-	-	-	1	1	1	-	-	-	
GSB	04	2,476	[Pink]	CASHIER	GSB	03	1397	-	5	-	4	-	-	-	-	-	-	.5	1	.5	-	-	-	
GSB	04	1,993	[Yellow]	STUDENT ACCOUNTING	OMB	03	1095	-	3	-	2	-	-	-	-	-	-	-	1	-	-	-	-	
GSB	04	2,538	[Yellow]	SEMINAR ROOMS (EVENT)	N/A	N/A	N/A	-	-	-	-	-	-	-	-	-	-	-	-	-	-	-	-	
GSB	04	857	[Grey]	SUPPORT SPACES	N/A	N/A	N/A	-	-	-	-	-	-	-	-	-	-	-	-	-	-	-	-	
GSB	03	1,058	[Blue]	STUDENT ADVO. & BELONGING	N/A	N/A	N/A	-	-	-	-	-	-	-	-	-	-	-	-	-	-	-	-	
GSB	03	1,402	[Yellow]	SHARED BREAK ROOM	N/A	N/A	N/A	-	-	-	-	-	-	-	-	-	-	-	-	-	-	-	-	

OBJECTIVE:
THIS WILL BE THE ADDITION OF THE 4TH FLOOR OF THE WELCOME CENTER AND THE RENOVATION OF PARTS OF THE 3RD FLOOR TO SUPPORT THE ENHANCED STUDENT SUPPORT AND CAMPUS SAFETY/SECURITY. THIS WILL ALSO BECOME THE NEW HOME OF STUDENT SUPPORT/SUCCESS PROGRAMS AND SERVICES, INCLUDING REGISTRAR, FINANCIAL AID, CASHIER, ENROLLMENT MANAGEMENT, TRANSFER RELATIONS, STUDENT ACCOUNTING, AND LARGE MULTIPURPOSE ROOMS.

SCOPE:
FINANCIAL AID

THE FINANCIAL AID OFFICE WILL RELOCATE FROM THE 3RD FLOOR OF THE ONE MAIN BUILDING TO THE 4TH FLOOR OF THE WELCOME CENTER. THE SPACE THEY ARE MOVING FROM IS 4,232 SF. THE NEW SPACE WILL BE 6,705 SF. IT WILL CONSIST OF TWENTY-FOUR OFFICES, TWENTY-THREE (23) **OFFICE 120 SF PRIVATE** AND ONE (1) **EXECUTIVE OFFICE**, ONE (1) **STORAGE ROOM** AND FOUR (4) SERVICE STATIONS.

THE CASHIER AND STUDENT ACCOUNTING WILL BE IN A CONTIGUOUS SPACE. BUT THE CASHIER SPACE IS REQUIRED NOT HAVE A DOOR BETWEEN THE TWO SPACES.

CASHIER

THE CASHIER WILL BE MOVING FROM THE 3RD FLOOR OF THE ONE MAIN BUILDING TO THE 4TH FLOOR OF THE WELCOME CENTER. THE SPACE THEY ARE MOVING FROM IS 1,978 SF. THE NEW SPACE WILL BE 2,476 SF. IT WILL CONSIST OF FOUR OFFICES, TWO (2) **OFFICE 120 SF PRIVATE** AND TWO (2) **EXECUTIVE OFFICE**, ONE (1) COPIER AREA, ONE (1) **STORAGE ROOM**, ONE (1) SAFE ROOM AND FIVE (5) SERVICE STATIONS. **(THE AREA MUST HAVE BALLISTIC PROTECTION)**

STUDENT ACCOUNTING

STUDENT ACCOUNTING WILL MOVE FROM THE 3RD FLOOR OF THE ONE MAIN BUILDING TO THE 4TH FLOOR OF THE WELCOME CENTER. THE SPACE THEY ARE MOVING FROM IS 1,095 SF. THE NEW SPACE WILL BE 1,993 SF. IT WILL CONSIST OF FIVE OFFICES, FOUR (4) **OFFICE 120 SF PRIVATE** AND ONE (1) **EXECUTIVE OFFICE** AND ONE (1) **STORAGE ROOM**.

SEMINAR ROOM

THE 4TH FLOOR OF THE WELCOME CENTER WILL HAVE TWO (2) **SEMINAR ROOM 25 TO 40**

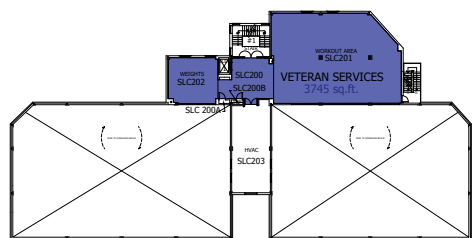
VETERAN SERVICES

VETERAN SERVICES WILL BE MOVING FROM TEMPORARY SPACE ON THE 4TH FLOOR OF THE STUDENT LIFE BUILDING TO THE 4TH FLOOR OF THE WELCOME CENTER. THE SPACE THEY ARE MOVING FROM IS 1,141 SF. THE NEW SPACE WILL BE 1,898 SF. IT WILL CONSIST OF FIVE (5) **OFFICE 120 SF PRIVATE**, ONE (1) COPIER AREA, ONE (1) **STORAGE ROOM**, ONE (1) WAITING ROOM (200 SF), AND ONE (1) INFORMATION DESK CONSISTING OF TWO (2) SERVICE STATIONS.

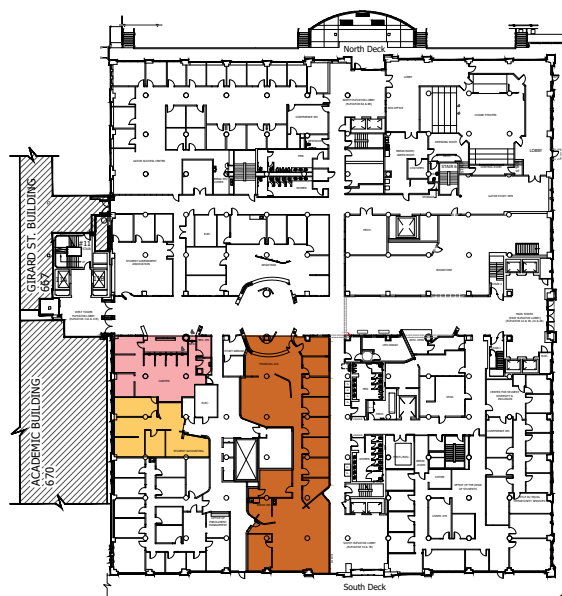
STUDENT ADVOCACY & BELONGING CENTER

BREAK ROOM

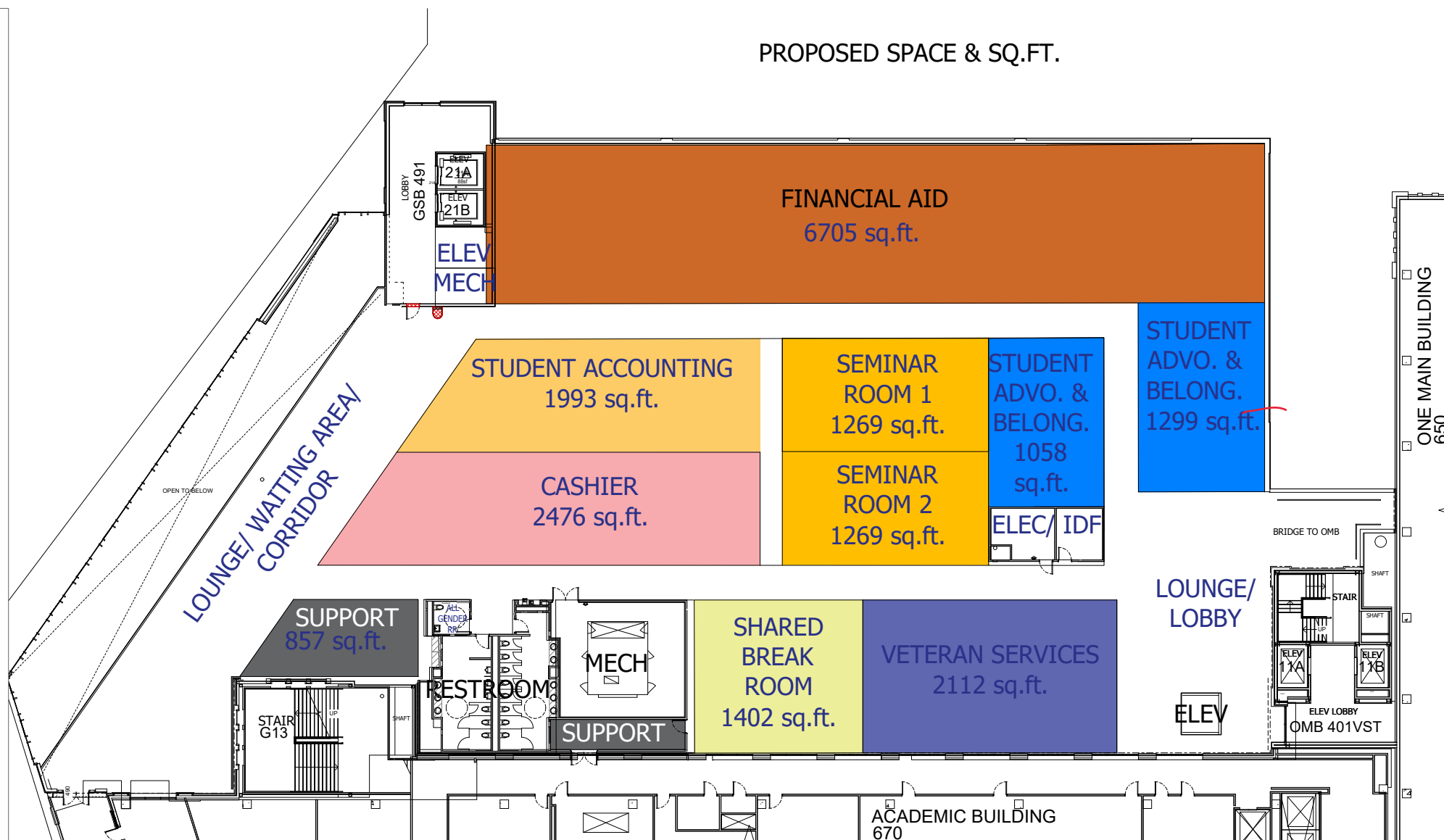
THE 4TH FLOOR OF THE WELCOME CENTER WILL HAVE ONE (1) **BREAK ROOM 8 TO 12**



STUDENT LIFE BUILDING | FLOOR: 02

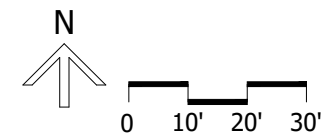


ONE MAIN BUILDING | FLOOR: 03



02 PROPOSED GSB-04 LAYOUT
SCALE: NTS

01 EXISTING LOCATION
SCALE: NTS



PROJECT NAME:
ONE MAIN COMPLEX PROGRAMMING (PHASE 2B)

DRAWN BY: T.H.
REVIEWED: O.O.J
START DATE: 2022
LAST UPDATED: 9/26/2023

BUILDING/FLOOR:
OMB/SLC TO GSB/04

SHEET:
PHASE 2B

Phase Two:

This will be the addition of the 4th floor of the Welcome Center and the renovation of parts of the 3rd floor to support the enhanced student support and campus safety/security. This will also become the new home of student support/success programs and services, including Registrar, Financial Aid, Cashier, Enrollment Management, Transfer Relations, Student Accounting, Center for Student Belonging and Advocacy and large multipurpose rooms.

3rd Floor

Registrar

The Registrar will be relocated from the 3rd floor of the One Main building to the 3rd floor of the Welcome Center in the space that Testing has vacated. The space they are moving from is 3,555 SF. The new space will be 4,560 SF. It will consist of thirteen offices (13), eleven (11) **Office 120 SF Private** one (1) **VP Office** and one (1) **Executive Office**, one (1) **Conference room 8 to 15**, one (1) **Lounge 4 to 8** /copier area, one (1) **storage room** and four (4) service stations.

Enrollment Management/Transfer Relations/Orientation

Enrollment Management/Transfer Relations/Orientation will be moving from the 3rd floor of the One Main building to the 3rd floor of the Welcome Center in the space Disability Services and Veteran Services were in. The space they are moving from is 2,885 SF. The new space will be 3,058 SF. It will consist of fourteen offices, twelve (13) **Office 120 SF Private** and one (1) **Executive Office**, one (1) copier area, one (1) **storage room** and three (3) service stations.

4th Floor

Financial Aid

The Financial Aid Office will relocate from the 3rd floor of the One Main building to the 4th floor of the Welcome Center. The space they are moving from is 4,232 SF. The new space will be 6,705 SF. It will consist of twenty-four offices, twenty-three (23) **Office 120 SF Private** and one (1) **Executive Office**, one (1) **storage room** and four (4) service stations.

The Cashier and Student Accounting will be in a contiguous space. But the cashier space is required not have a door between the two spaces.

Cashier

The Cashier will be moving from the 3rd floor of the One Main building to the 4th floor of the Welcome Center. The space they are moving from is 1,978 SF. The new space will be 2,476 SF. It will consist of four offices, two (2) **Office 120 SF Private** and two (2) **Executive Office**, one (1) copier area, one (1) **storage room**, one (1) Safe room and five (5) service stations. (**The area must have ballistic protection**)

Student Accounting

Student Accounting will move from the 3rd floor of the One Main building to the 4th floor of the Welcome Center. The space they are moving from is 1,095 SF. The new space will be 1,993 SF. It will consist of five offices, four (4) **Office 120 SF Private** and one (1) **Executive Office** and one (1) **storage room**.

Seminar Room

The 4th floor of the Welcome Center will have Two (2) **Seminar Room 25 to 40**

Veteran Services

Veteran Services will be moving from temporary space on the 4th floor of the Student Life building to the 4th floor of the Welcome Center. The space they are moving from is 1,141 SF. The new space will be 1,898 SF. It will consist of five (5) **Office 120 SF Private**, one (1) copier area, one (1) **storage room**, one (1) Waiting room (200 SF), and one (1) Information desk consisting of two (2) service stations.

Center for Student Belonging and Advocacy

The Center for Student Belonging and Advocacy will be moving from the 3rd floor of the One Main building to the 4th floor of the Welcome Center. It will consist of three offices, three (3) **Office 120 SF Private**, one (1) **Conference room up to 8** /copier area and one (1) **storage room**.

Break Room

The 4th floor of the Welcome Center will have one (1) **Break Room 8 to 12**

Support Rooms

This buildout will also create a Mechanical room, IDF room, Electrical room, and Housekeeping space. These rooms will be the same size as found on the 3rd floor of the Welcome Center and will be vertically stacked.

RELOCATE TO					RELOCATE FROM					EXISTING ROOM COUNT														
BLDG	FLOOR	SQ.FT.	COLOR	DEPT	BLDG	FLOOR	SQ.FT.	RECEPT.	OFFICES	CUBICLES	WORK STATION (OPEN)	CONFR. ROOM	COMPUTER LAB	CLASS ROOMS	LABS.	TESTING RM.	HUDDLE RM.	BRK. RM	STOR.	COPY AREA	LOUNGE	STUDY ZONE	LOCKER AREA	GALLERY
SLC	01	2,551	Green	MAIN CAREER CENTER	OMB	04	2151	1	6	-	-	1	-	-	-	-	2	.5	1(M)	.5	-	-	-	-
SLC	02	2,891	Yellow	HEALTH SERVICE	OMB	04	2341	1	2	-	-	1	-	-	-	-	5	1	1(M)	-	-	-	-	-
SLC	01	2,599	Blue	DISABILITIES SERVICES	SLC	01	4,404-TEMP	1	2	-	-	-	1(12 comp)	-	-	-	-	1	1(M)	-	-	-	-	-
SLC	03	3,397	Pink	COUNSELING SERVICES	OMB	03	3,713	1	9	-	-	1	-	-	-	-	-	.5	1(M)	.5	-	-	-	-
OMB	03	1,773	Purple	PARKING & TRANSPORT. SERVICES	OMB	01	643	1	3	-	-	-	-	-	-	-	-	-	1(M)	-	-	-	-	-

UHD University of Houston
DOWNTOWN

SPACE PROGRAMMING

OBJECTIVE:
THIS WILL BE THE REMODEL OF THE 3RD FLOOR OF THE ONE MAIN BUILDING AFTER THE OCCUPANTS HAVE MOVED TO THEIR NEW AREAS CREATED BY PHASE TWO. THIS WILL BE MOVING A VARIETY OF STUDENT SERVICES FROM THE 6TH, 4TH, AND 2ND FLOORS OF THE ONE MAIN BUILDING AS WELL AS TEMPORARY SPACE IN THE STUDENT LIFE BUILDING.

SCOPE:
STUDENT SUCCESS & STUDENT LIFE

MAIN CAREER CENTER
THE CAREER CENTER WILL BE MOVING FROM THE 4TH FLOOR OF THE ONE MAIN BUILDING TO THE 3RD FLOOR OF THE ONE MAIN BUILDING. THE SPACE THEY ARE MOVING FROM IS 2,151 SF. THE NEW SPACE WILL BE 2,551 SF. IT WILL CONSIST OF SEVEN OFFICES (7) OFFICE 120 SF PRIVATE, ONE (1) CONFERENCE ROOM UP TO 8 / COPIER AREA, ONE (1) STORAGE ROOM AND TWO (2) SERVICE STATIONS.

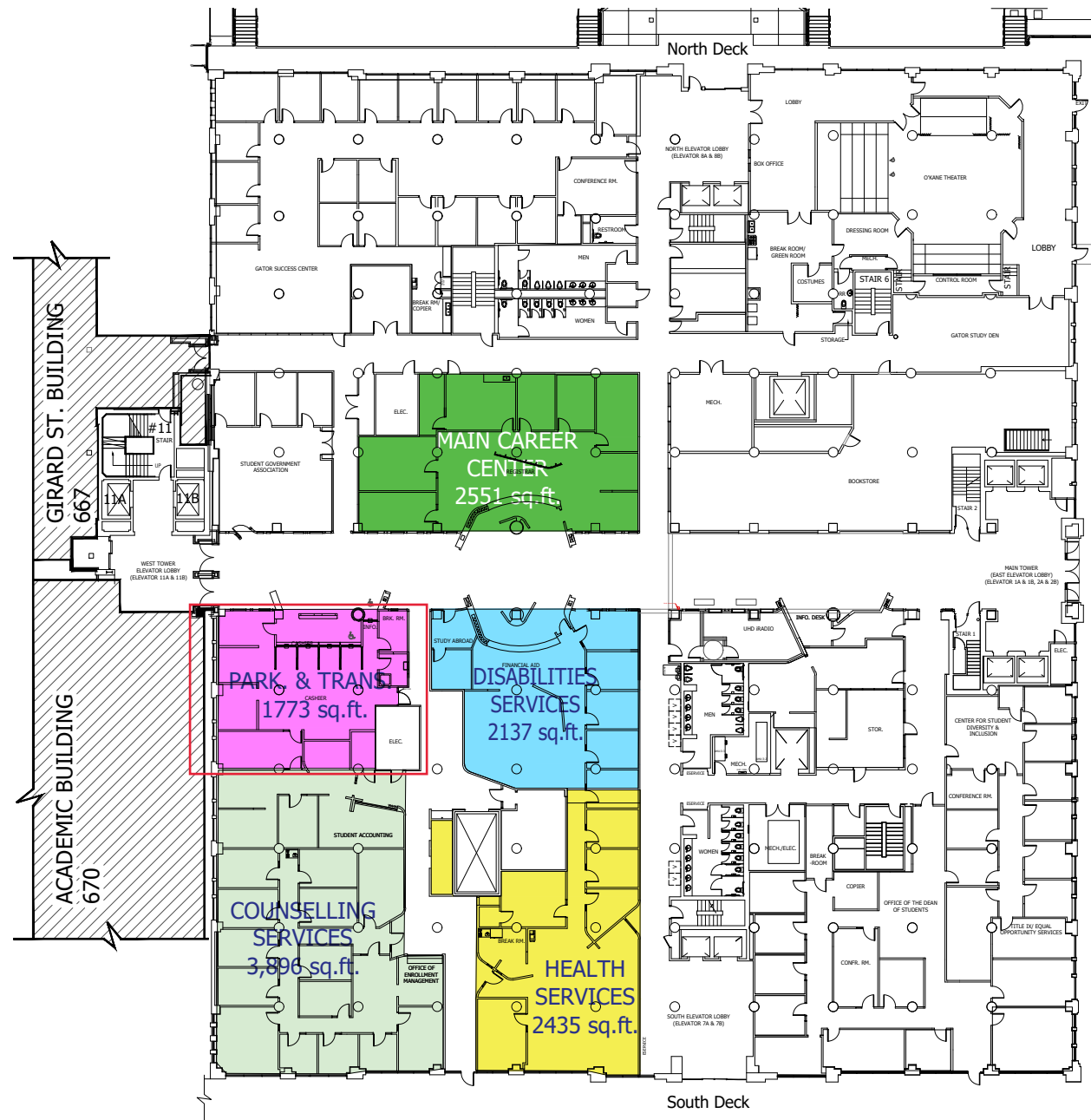
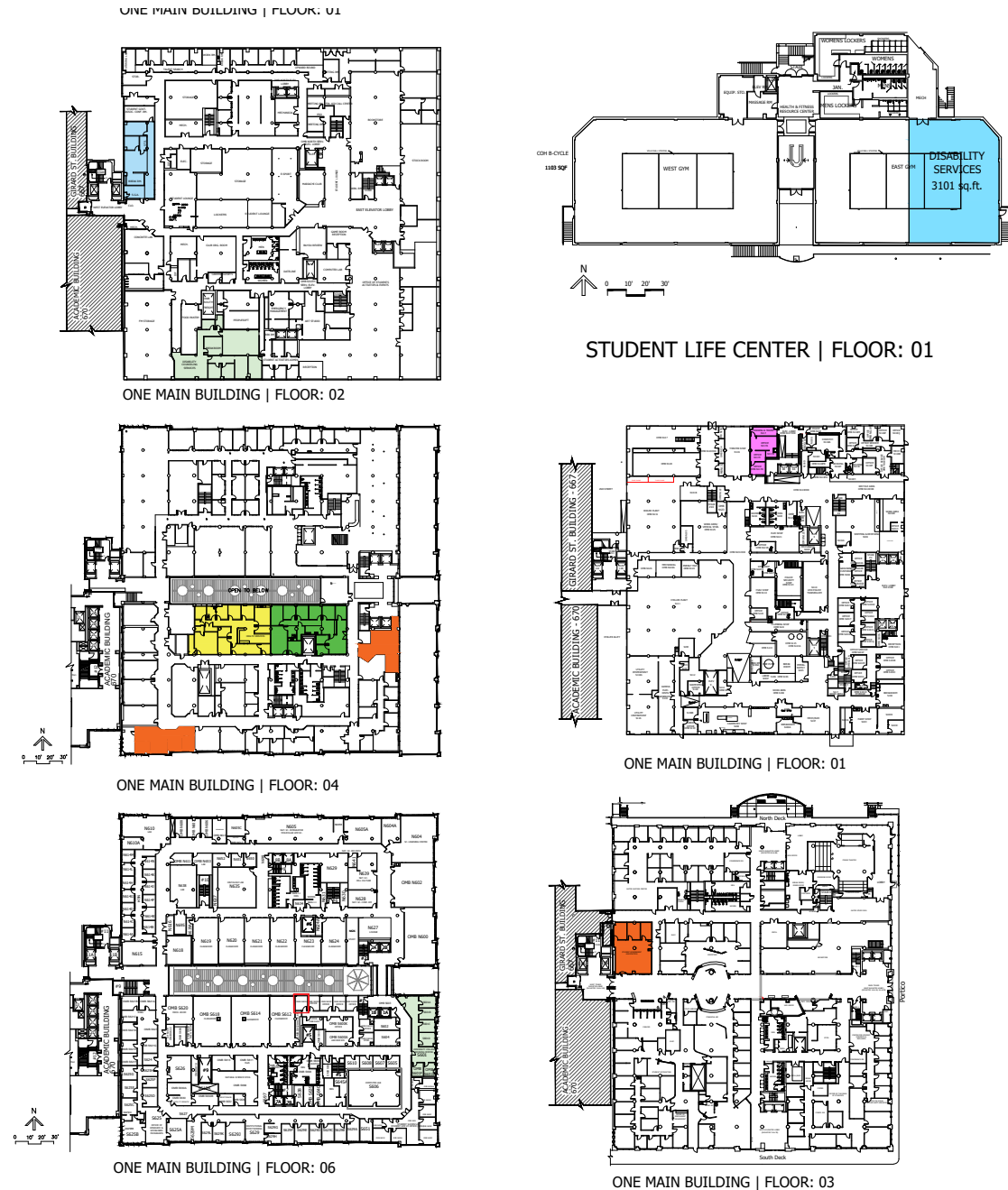
HEALTH SERVICES
HEALTH SERVICES WILL BE MOVING FROM THE 4TH FLOOR OF THE ONE MAIN BUILDING TO THE 3RD FLOOR OF THE ONE MAIN BUILDING. THE SPACE THEY ARE MOVING FROM IS 2,341 SF. THE NEW SPACE WILL BE 2,435 SF. IT WILL CONSIST OF IT WILL CONSIST OF FOUR (4) OFFICE 120 SF PRIVATE, TWO (2) EXAM ROOMS (100 SF), ONE (1) UNISEX RESTROOM, ONE (1) LACTATION ROOM (70 SF), ONE (1) QUIET ROOM (70 SF), ONE (1) LABORATORY (200 SF), ONE (1) WAITING ROOM (200 SF), ONE (1) CONFERENCE ROOM UP TO 8, ONE (1) FILE ROOM(60 SF), HEALTH SERVICE COUNTER (300 SF) AND ONE (1) BIO STORAGE ROOM (60 SF).

DISABILITIES SERVICES
DISABILITIES SERVICES WILL BE MOVING FROM TEMPORARY SPACE ON THE FIRST FLOOR OF THE STUDENT LIFE BUILDING TO THE 3RD FLOOR OF THE ONE MAIN BUILDING. THE SPACE THEY ARE MOVING FROM IS 1,475 SF. THE NEW SPACE WILL BE 2,137 SF. IT WILL CONSIST OF FOUR (4) OFFICE 120 SF PRIVATE, ONE (1) COPIER AREA, ONE (1) STORAGE ROOM, ONE (1) WAITING ROOM (200 SF), AND ONE (1) INFORMATION DESK CONSISTING OF TWO (2) SERVICE STATIONS.

COUNSELING
COUNSELING WILL BE MOVING FROM THE 6TH & 2ND FLOOR OF THE ONE MAIN BUILDING TO THE 3RD FLOOR OF THE ONE MAIN BUILDING. IT WILL CONSIST OF IT WILL CONSIST OF NINE OFFICES, EIGHT (8) OFFICE 120 SF PRIVATE AND ONE (1) EXECUTIVE OFFICE, ONE (1) WAITING ROOM (200 SF), ONE (1) CONFERENCE ROOM UP TO 8, AND ONE (1) STORAGE ROOM.

PARKING & TRANSPORTATION
PARKING & TRANSPORTATION WILL BE MOVING FROM THE 1ST FLOOR OF THE ONE MAIN BUILDING TO THE 3RD FLOOR OF THE ONE MAIN BUILDING. IT WILL CONSIST OF THREE OFFICES, (3) OFFICE 120 SF PRIVATE. ONE (1) FRONT DESK/RECEPTION (200 SF), AND ONE (1) STORAGE ROOM.

SUPPORT ROOMS
THIS BUILDOUT WILL ALSO CREATE A MECHANICAL ROOM, IDF ROOM, ELECTRICAL ROOM, AND HOUSEKEEPING SPACE.



01 EXISTING LAYOUT-FROM OMB & SLC
SCALE: NTS

02 PROPOSED LAYOUT - OMB 03 FL
SCALE: NTS

PROJECT NAME:

ONE MAIN COMPLEX PROGRAMMING (PHASE 3)

DRAWN BY: T.H.

REVIEWED: O.O.J.

START DATE: 2022

LAST UPDATED: 9/19/2023

BUILDING/FLOOR:

OMB/SLC TO OMB/03

SHEET:

PHASE 3

Phase Three:

This will be the remodel of the 3rd floor of the One Main building after the occupants have moved to their new areas created by **Phase Two**. This will be moving a variety of student services from the 6th, 4th, and 2nd floors of the One Main building as well as temporary space in the Student Life building.

Main Career Center

The Career center will be moving from the 4th floor of the One Main building to the 3rd floor of the One Main building. The space they are moving from is 2,151 SF. The new space will be 2,551 SF. It will consist of seven offices, seven (7) **Office 120 SF Private**, one (1) **Conference room up to 8** /copier area, one (1) **storage room** and one (1) Information desk consisting of two (2) service stations.

Health Services

Health Services will be moving from the 4th floor of the One Main building to the 3rd floor of the One Main building. The space they are moving from is 2,341 SF. The new space will be 2,435 SF. It will consist of It will consist of four (4) **Office 120 SF Private**, two (2) Exam Rooms (100 SF), one (1) Unisex Restroom, one (1) Lactation room (70 SF), one (1) Quiet room (70 SF), one (1) Laboratory (200 SF), one (1) Waiting room (200 SF), one (1) **Conference room up to 8**, one (1) File room(60 SF), Health Service counter (300 SF) and one (1) Bio Storage room (60 SF).

Disabilities Services

Disabilities Services will be moving from temporary space on the 4th floor of the Student Life building to the 3rd floor of the One Main building. The space they are moving from is 1,475 SF. The new space will be 2,137 SF. It will consist of four (4) **Office 120 SF Private**, one (1) copier area, one (1) **storage room**, one (1) Waiting room (200 SF), and one (1) Information desk consisting of two (2) service stations.

Counseling

Counseling will be moving from the 6th & 2nd floor of the One Main building to the 3rd floor of the One Main building. It will consist of It will consist of nine offices, eight (8) **Office 120 SF Private** and one (1) **Executive Office**, one (1) Waiting room (200 SF), one (1) **Conference room up to 8**, and one (1) **storage room**.

Parking and Transportation

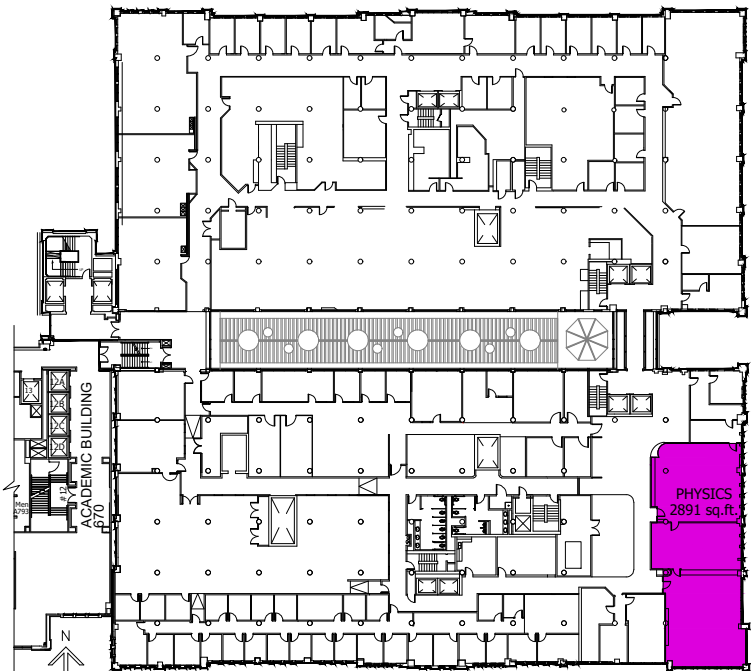
Parking and Transportation will be moving from the 1st floor of the One Main building to the 3rd floor of the One Main building. It will consist of one (1) **Office 120 SF Private**, one (1) copier area, one (1) **storage room** and one (1) Information desk consisting of three (3) service stations.

Support Rooms

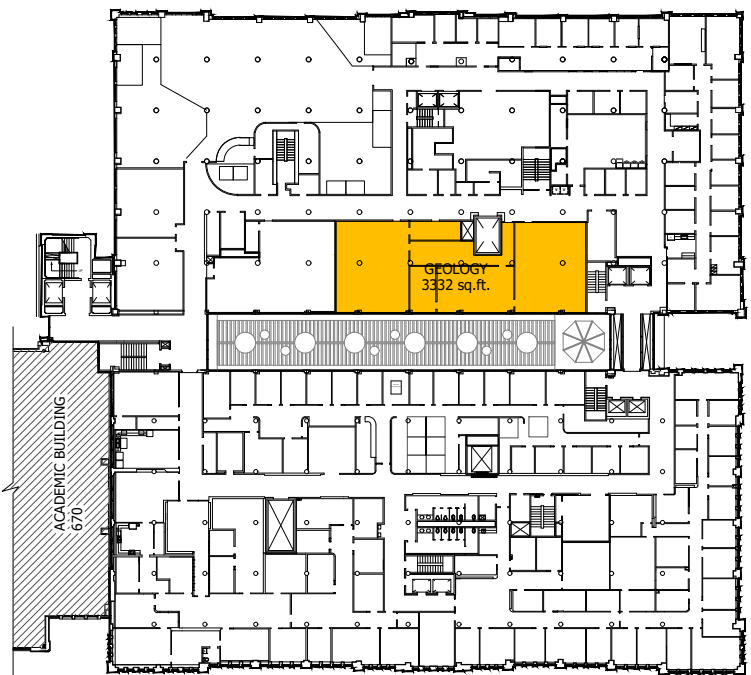
This buildout will also create a Mechanical room, IDF room, Electrical room, and Housekeeping space.

SPACE PROGRAMMING

RELOCATE TO				RELOCATE FROM			EXISTING ROOM COUNT																	
BLDG	FLOOR	SQ.FT.	COLOR	DEPT	BLDG	FLOOR	SQ.FT.	RECEPT.	OFFICES	CUBICLES	WORK STATION (OPEN)	CONFR. ROOM	COMPUTER LAB	CLASS ROOMS	LABS.	TESTING RM.	HUDDLE RM.	BRK. RM	STOR.	COPY AREA	LOUNGE	STUDY ZONE	LOCKER AREA	GALLERY
SLC	02	3,563	Orange	CSET/GEOLGY	OMB	08	3332	1	2	-	-	1	-	-	-	-	5	1	1(M)	-	-	-	-	-
SLC	01	1,809	Purple	CSET/PHYSICS	OMB	08	2891	1	2	-	-	-	1(12 comp)	-	-	-	-	1	1(M)	-	-	-	-	-
SLC	01	2,084	Green	RESERVED	OMB	08	743	1	3	-	-	-	1(x comp)	-	-	-	1	1	1(M)	-	1	1	-	-
OMB	08	173	Red	IDF EXPANSION	OMB	08	34	-	-	-	-	-	-	-	-	-	-	-	-	-	-	-	-	-
N/A	N/A	N/A	Grey	VACANT SPACE	OMB	08	1702	1	3	-	-	-	1(x comp)	-	-	-	1	1	1(M)	-	1	1	-	-



ONE MAIN BUILDING | FLOOR 08



ONE MAIN BUILDING | FLOOR 09



02 PROPOSED LAYOUT OMB 08

SCALE: NTS

OBJECTIVE:

THIS WILL RENOVATE THE NORTH 8TH FLOOR OF ONE MAIN TO RECEIVE GEOLOGY FROM NORTH 9TH FLOOR OF ONE MAIN BUILDING AND THE PHYSICS DEPARTMENT FROM SOUTH 8TH FLOOR OF ONE MAIN. THIS WILL ALSO ENLARGE THE IDF ROOM ON NORTH 8 TO MEET CURRENT STANDARDS.

SCOPE:

COLLEGE OF SCIENCES & TECHNOLOGY

GEOLGY

GEOLGY WILL MOVE FROM THE NORTH 9TH FLOOR OF THE ONE MAIN BUILDING TO THE NORTH 8TH FLOOR OF THE ONE MAIN BUILDING. THE SPACE THEY ARE MOVING FROM IS 4,905 SF. THE NEW SPACE WILL BE 5,740 SF. IT WILL CONSIST OF TWO (2) LABORATORIES (1,100 SF), ONE (1) LARGE STORAGE SPACE (1,100 SF) AND ONE (1) LARGE PROJECT LABORATORY.

PHYSICS

PHYSICS DEPARTMENT WILL MOVE FROM SOUTH 8TH FLOOR OF ONE MAIN TO 8TH FLOOR OF NORTH MAIN. IT WILL CONSIST OF TWO (2) LABORATORIES (1,100 SF), AND ONE (1) LARGE STORAGE SPACE (700 SF),

INFORMATION TECHNOLOGY

SUPPORT ROOMS

THIS BUILD-OUT WILL ALSO CREATE A IDF ROOM, AND HOUSEKEEPING SPACE.

01 EXISTING LAYOUT

SCALE: NTS

PROJECT NAME:

ONE MAIN COMPLEX PROGRAMMING (PHASE 4)

DRAWN BY: T.H.

REVIEWED: O.O.J.

START DATE: 2022

LAST UPDATED: 9/27/2023

BUILDING/FLOOR:

OMB/08&09

TO OMB/08

SHEET:

PHASE 4

Phase Four:

This will renovate the North 8th floor of One Main to receive Geology from North 9th floor of One main building and the Physics department from South 8th floor of One Main. This will also enlarge the IDF room on North 8 to meet current standards.

Geology

Geology will move from the North 9th floor of the One Main building to the North 8th floor of the One Main building. The space they are moving from is 4,905 SF. The new space will be 5,740 SF. It will consist of Two (2) laboratories (1,100 SF), One (1) large Storage Space (1,100 SF) and One (1) Large Project Laboratory.

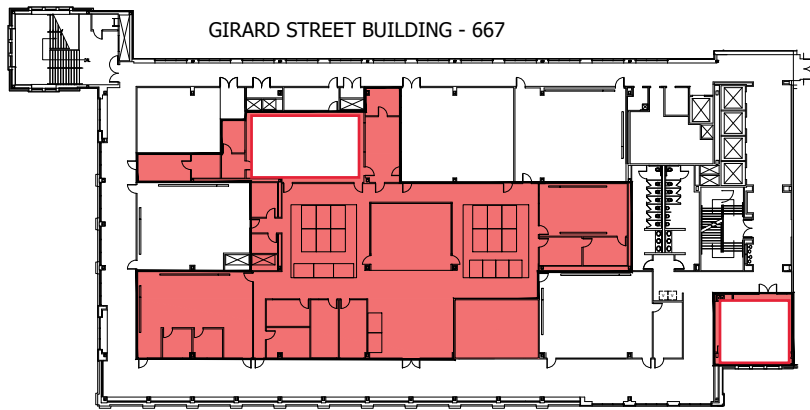
Physics

Physics department will move from South 8th floor of One Main to 8th floor of North Main. It will consist of Two (2) laboratories (1,100 SF), and One (1) large Storage Space (700 SF),

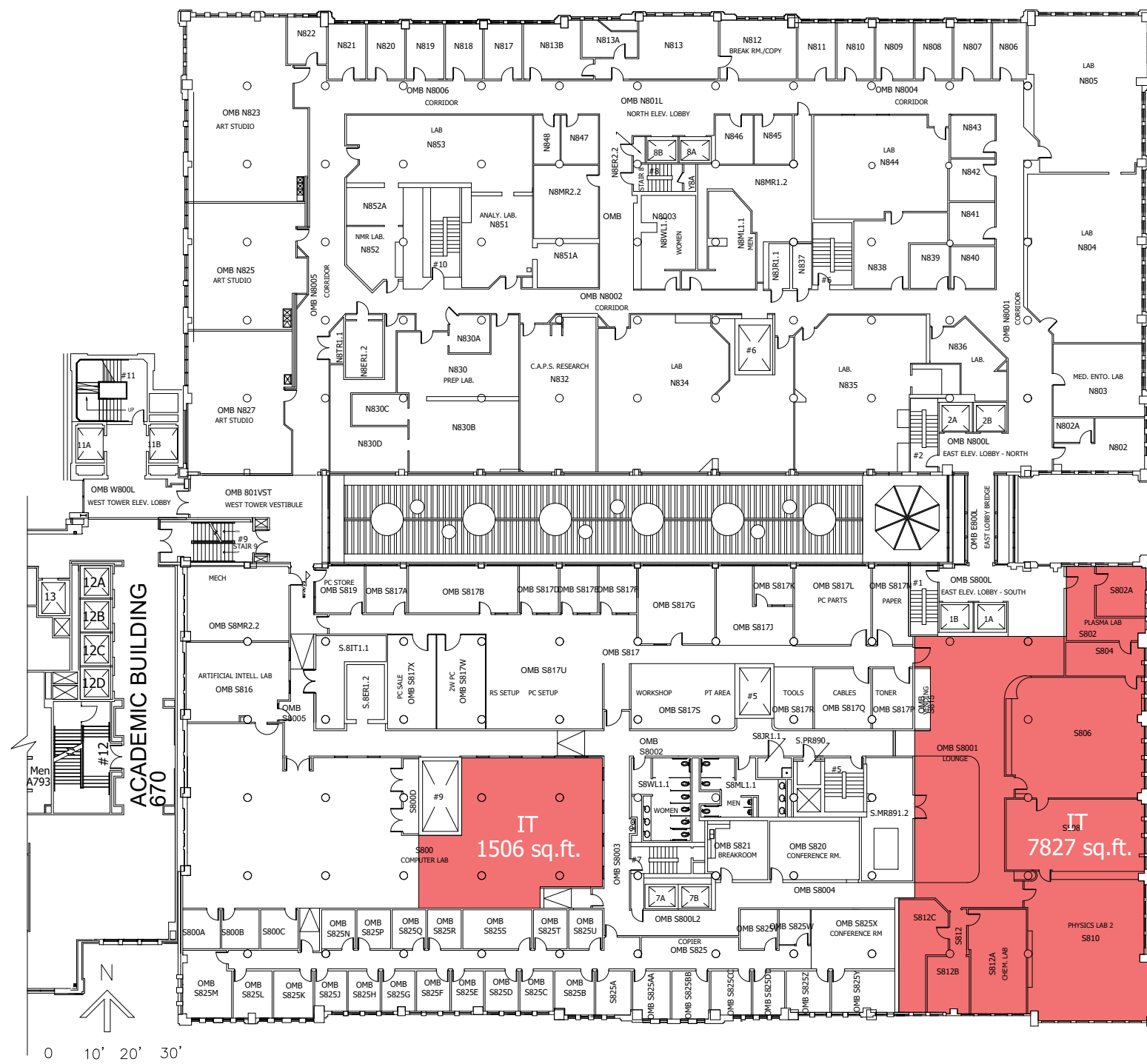
Support Rooms

This buildout will also create a IDF room, and Housekeeping space.

RELOCATE TO				RELOCATE FROM			EXISTING ROOM COUNT																	
BLDG	FLOOR	SQ.FT.	COLOR	DEPT	BLDG	FLOOR	SQ.FT.	RECEPT.	OFFICES	CUBICLES	WORK STATION (OPEN)	CONFR. ROOM	COMPUTER LAB	CLASS ROOMS	LABS.	TESTING RM.	HUDDLE RM.	BRK. RM	STOR.	COPY AREA	LOUNGE	STUDY ZONE	LOCKER AREA	GALLERY
OMB	08	6,152		INFORMATION TECHNOLOGY	ACAD	07	9394	1	6	25	8	2	-	-	-	-	2	1	3	.5	-	-	-	-
OMB	08	1,506		ACADEMIC AFFAIRS (CTLE)	ACAD	07	569	1	2	-	-	-	-	-	-	-	-	.5	-	.5	-	-	-	-



ACADEMIC BUILDING | FLOOR 07



02 PROPOSED LAYOUT
SCALE: NTS

01 EXISTING LAYOUT
SCALE: NTS

UHD University of Houston
DOWNTOWN

SPACE PROGRAMMING

OBJECTIVE:

THIS WILL RENOVATE THE SOUTH 8TH FLOOR OF ONE MAIN TO RECEIVE THE OIT SHOPS FROM ACADEMIC 7TH FLOOR. THE PIECES OF THE OFFICE OF INFORMATION TECHNOLOGY THAT ARE LOCATED ON THE 7TH FLOOR OF THE ACADEMIC WING WILL RELOCATE TO SOUTH 8TH FLOOR OF THE ONE MAIN BUILDING. IT WILL CONSIST OF THE FOLLOWING PARTS.

SCOPE:

INFORMATION TECHNOLOGY-TECHNOLOGY TEACHING & LEARNING CENTER (TTLC)

MULTIMEDIA SERVICES & VIDEO PRODUCTION

THIS WILL CONSIST OF THREE (3) **OFFICE 120 SF PRIVATE**, ONE (1) LARGE OPEN OFFICE AREA (1,000 SF) AND ONE (1) **STORAGE ROOM**.

CANVAS SUPPORTS

THIS WILL CONSIST OF THREE (3) **OFFICE 120 SF PRIVATE**, ONE (1) LARGE OPEN AREA (600 SF) TO SUPPORT ELEVEN (11) CUBICLES THAT WILL BE MOVED FROM THE ORIGINAL SPACE AND ONE (1) **STORAGE ROOM**.

USER SUPPORTS

ONE (1) LARGE OPEN AREA (600 SF) TO SUPPORT TEN (10) CUBICLES THAT WILL BE MOVED FROM THE ORIGINAL SPACE AND ONE (1) **STORAGE ROOM**.

VIDEO NETWORKING SERVICES

THIS WILL CONSIST OF THREE (3) ROOMS, TWO WILL BE 150 SF AND ONE WILL BE 550 SF. ALSO, ONE (1) **STORAGE ROOM**.

TRAINING ROOM

THIS WILL CONSIST OF A 700 SF SPACE TO SUPPORT THE CURRENT FURNITURE.

ACADEMIC AFFAIRS

CENTER FOR TEACHING AND LEARNING EXCELLENCE (CTLE)

THIS WILL CONSIST OF TWO (2) **OFFICE 120 SF PRIVATE**, AND ONE (1) LARGE OPEN AREA (600 SF), AND ONE (1) **STORAGE ROOM**.

PROJECT NAME:

ONE MAIN COMPLEX PROGRAMMING (PHASE 5)

DRAWN BY: T.H.

REVIEWED: O.O.J.

START DATE: 2022

LAST UPDATED: 5/11/2023

BUILDING/FLOOR:

**OMB/08&09
TO OMB/08**

SHEET:

PHASE 5

Phase Five:

This will renovate the South 8th floor of One Main to receive the OIT shops from Academic 7th floor.

Office of Information Technology

The pieces of the Office of Information Technology that are located on the 7th floor of the Academic wing will relocate to South 8th floor of the One Main building. It will consist of the following parts:

Multimedia Services & Video Production: This will consist of three (3) *Office 120 SF Private*, one (1) large open area (1,000 SF) and one (1) *storage room*.

Canvas Support: This will consist of three (3) *Office 120 SF Private*, One (1) large open area (600 SF) to support nine (9) cubicles that will be moved from the original space and one (1) *storage room*.

User Support: One (1) large open area (600 SF) to support nine (9) cubicles that will be moved from the original space and one (1) *storage room*.

CTLE: This will consist of two (2) *Office 120 SF Private*, and One (1) large open area (600 SF), and one (1) *storage room*.

Video Networking Services: This will consist of three (3) rooms, two will be 150 SF and one will be 550 SF. Also, one (1) *storage room*.

Training Room: This will consist of a 700 SF space to support the current furniture.

RELOCATE TO				RELOCATE TO			EXISTING ROOM COUNT																
BLDG	FLOOR	SQ.FT.	COLOR	BLDG	FLOOR	SQ.FT.	RECEPT.	OFFICES	CUBICLES	WORK STATION (OPEN)	CONFR. ROOM	COMPUTER LAB	CLASS ROOMS	LABS.	TESTING RM.	HUDDLE RM.	BRK. RM	STOR.	COPY AREA	LOUNGE	STUDY ZONE	LOCKER AREA	GALLERY
GSB	04	9100		ARTS	OMB	08	3237	-	6	-	-	-	-	-	-	-	.5	1	.5	-	-	-	-

SPACE PROGRAMMING

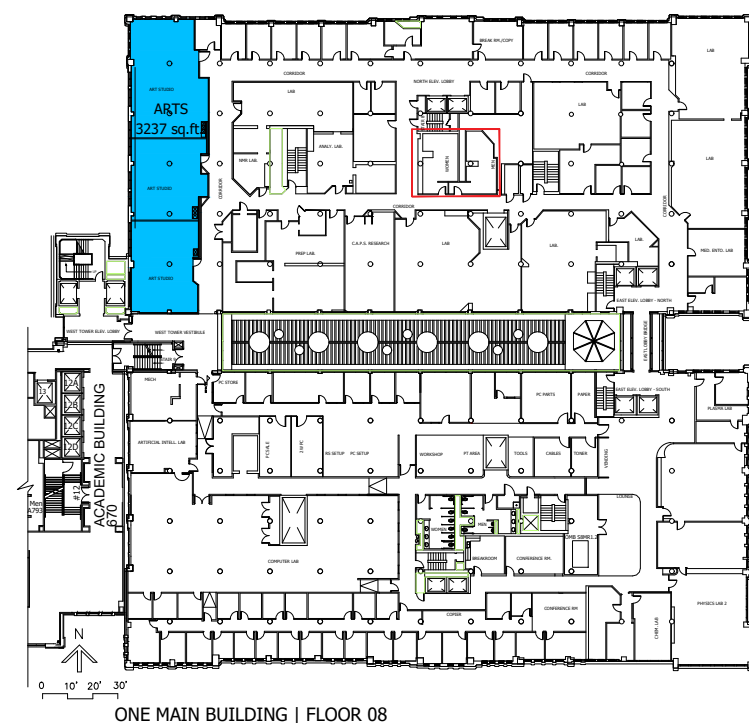
OBJECTIVE:

THIS WILL BUILDOUT PARTS OF THE ACADEMIC 7TH FLOOR TO RECEIVE THE ARTS LABS FROM NORTH 8TH FLOOR OF THE ONE MAIN BUILDING AND THE LABS FOR THE 10TH FLOOR OF THE ONE MAIN BUILDING.

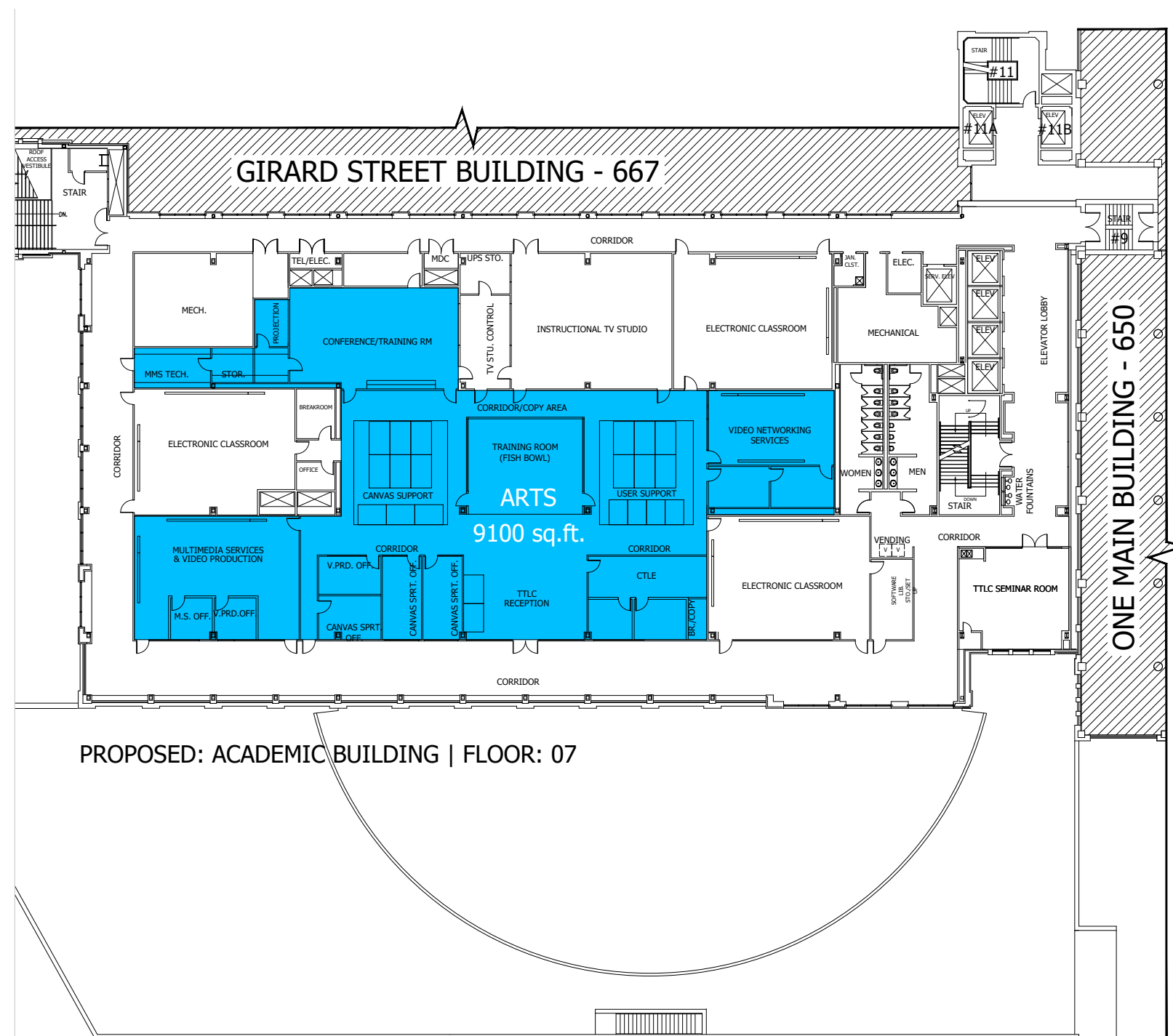
SCOPE:

COLLEGE OF HUMANITIES AND SOCIAL SCIENCES

IT WILL CONSIST OF THREE (3) ART STUDIOS, TWO (2) GRAPHIC ARTS STUDIOS, ONE (1) KILN SPACE, ONE (1) **STORAGE ROOM**.



01 EXISTING LAYOUT
SCALE: NTS



02 PROPOSED LAYOUT
SCALE: NTS

Phase Six:

This will buildout parts of the Academic 7th floor to receive the Arts labs from North 8th floor of the One Main building and the Labs for the 10th floor of the One Main Building.

Collage of Humanities and Social Sciences

It will consist of three (3) Art Laboratories, two (2) Graphic Arts Laboratories, one (1) Kiln space, one (1) ***storage room***.

RELOCATE TO				RELOCATE FROM				EXISTING ROOM COUNT																
BLDG	FLOOR	SQ.FT.	COLOR	DEPT	BLDG	FLOOR	EXISTING SQ.FT.	RECEPT.	OFFICES	CUBICLES	WORK STATION (OPEN)	CONFR. ROOM	COMPUTER LAB	CLASS ROOMS	LABS.	TESTING RM.	HUDDLE RM.	BRK. RM	STOR.	COPY AREA	LOUNGE	STUDY ZONE	LOCKER AREA	GALLERY
OMB	09	4879	Yellow	EVENTS & CONFERENCES	OMB	03	1,192	1	-	2	-	1	-	-	-	-	-	.5	1	.5	-	-	-	-
OMB	09	8,134	Blue	OFFICE OF THE PROVOST	OMB	09	4,709	1	10	-	-	1	-	-	-	-	-	1	.5	.5	-	-	-	-
OMB	09	3,075	Green	ADVANCEMENT & UNIVERSITY RELATION	OMB	09	2,367	-	9	-	-	-	-	-	-	-	-	-	1	1	-	-	-	1
OMB	09	3,499	Grey	UNASSIGNED	-	-	-	-	-	-	-	-	-	-	-	-	-	-	-	-	-	-	-	-

SPACE PROGRAMMING

OBJECTIVE:

THE BUILDOUT NORTH 9TH FLOOR OF ONE MAIN BUILDING FOR UNIVERSITY RELATIONS AND THE PROVOST OFFICE. THEY WILL MOVE FROM SOUTH 9TH FLOOR TO NORTH 9TH FLOOR. ALSO, EVENTS WILL MOVE FROM NORTH 6TH FLOOR TO NORTH 9TH FLOOR.

SCOPE:

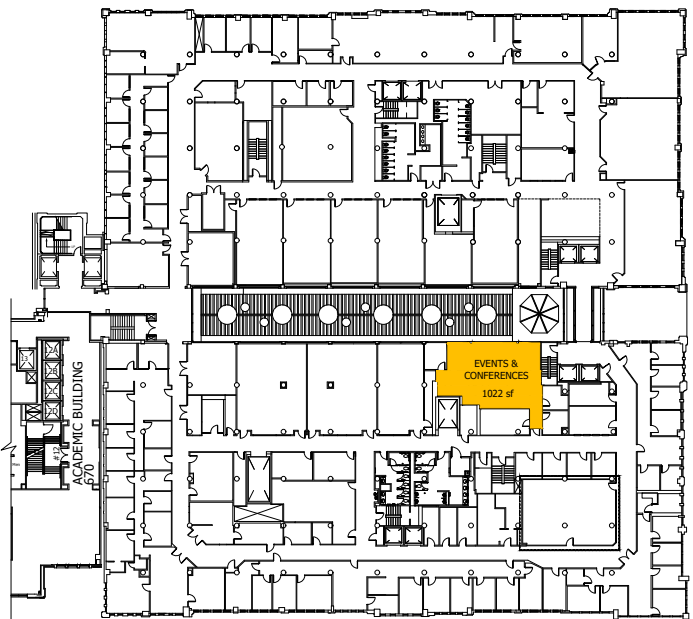
ADVANCEMENT & UNIVERSITY RELATIONS THEY WILL MOVE FROM SOUTH 9TH FLOOR TO NORTH 9TH FLOOR. IT WILL CONSIST OF SEVEN OFFICES, FIVE (6) **OFFICE 120 SF PRIVATE** AND ONE (1) **VP OFFICE**, ONE (1) **CONFERENCE ROOM UP TO 8 TO 15 /COPIER AREA** AND ONE (1) **STORAGE ROOM**.

ACADEMIC AFFAIRS/PROVOST OFFICE THEY WILL MOVE FROM SOUTH 9TH FLOOR TO NORTH 9TH FLOOR. IT WILL CONSIST OF FIFTEEN OFFICES, FOURTEEN (14) **OFFICE 120 SF PRIVATE** AND ONE (1) **VP OFFICE**, ONE (1) **CONFERENCE ROOM UP TO 8 TO 15 /COPIER AREA** AND ONE (1) **STORAGE ROOM**.

EVENTS & CONFERENCE THEY WILL MOVE FROM SOUTH 6TH FLOOR TO NORTH 9TH FLOOR. IT WILL CONSIST OF FIVE (5) **OFFICE 120 SF PRIVATE**, ONE (1) **CONFERENCE ROOM UP TO 8 /COPIER AREA**, ONE (1) **STORAGE ROOM (1,500 SF)** WITH DEEP SINK AND FLORAL COOLER.

SUPPORT ROOMS

THIS BUILD-OUT WILL ALSO CREATE A **IDF ROOM**, AND **HOUSEKEEPING SPACE**.

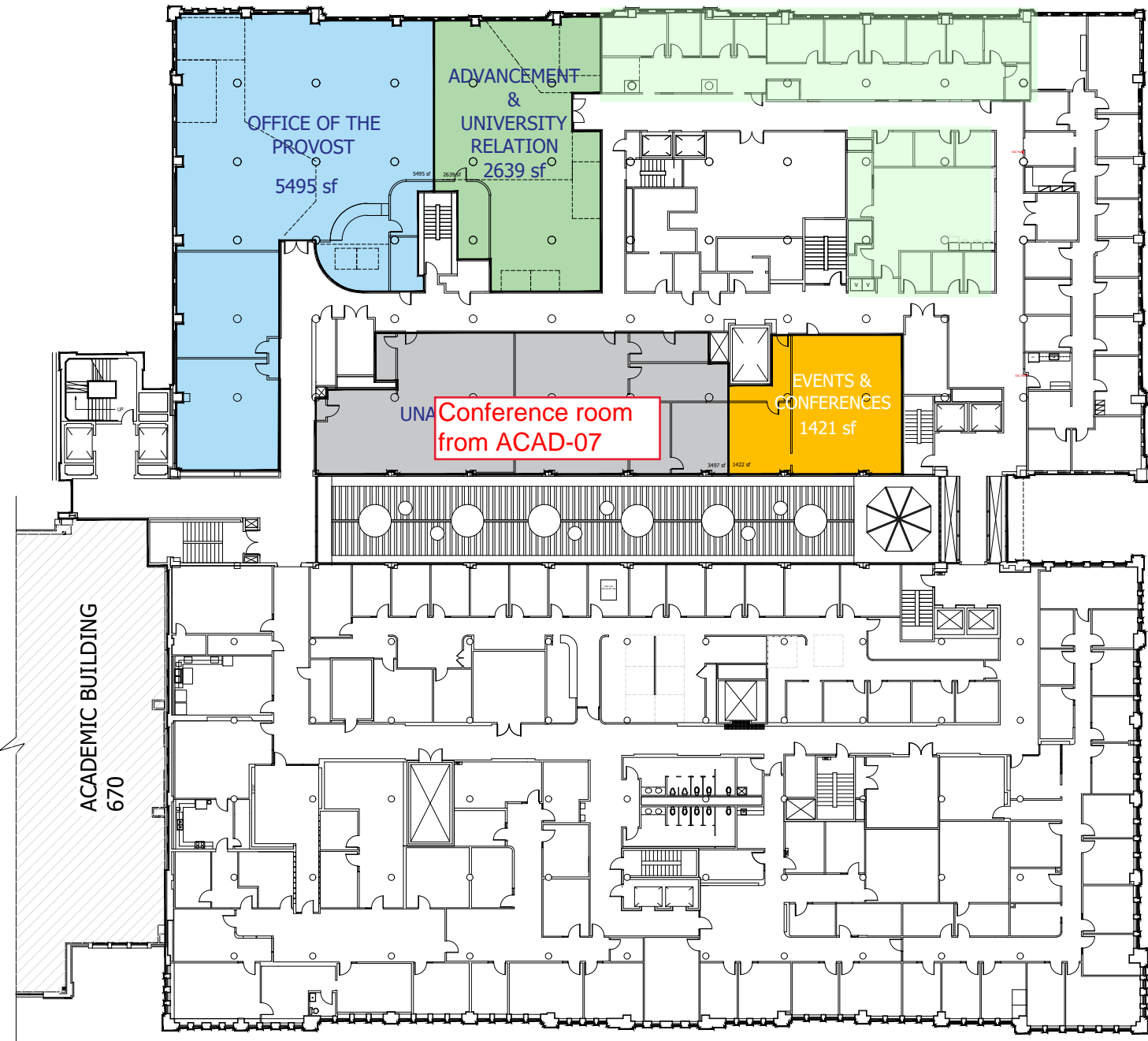


ONE MAIN BUILDING | FLOOR 06



ONE MAIN BUILDING | FLOOR 09

01 EXISTING LAYOUT
SCALE: NTS



02 PROPOSED LAYOUT OMB 09
SCALE: NTS

Phase Seven:

The buildout North 9th floor of One Main building for University Relations and the Provost Office. They will move from South 9th floor to North 9th floor. Also, Events will move from North 6th floor to North 9th floor.

University Relations

They will move from South 9th floor to North 9th floor. It will consist of fourteen offices, thirteen (13) **Office 120 SF Private** and one (1) **VP Office**, one (1) **Conference room up to 8 to 15** /copier area and one (1) **storage room**.

Provost Office

They will move from South 9th floor to North 9th floor. It will consist of fifteen offices, fourteen (14) **Office 120 SF Private** and one (1) **VP Office**, one (1) **Conference room up to 8 to 15** /copier area and one (1) **storage room**.

Events

They will move from South 6th floor to North 9th floor. It will consist of five (5) **Office 120 SF Private**, one (1) **Conference room up to 8** /copier area, one (1) storage room (1,500 SF) with Deep sink and floral cooler.

Support Rooms

This buildout will also create a IDF room, and Housekeeping space.

RELOCATE TO				RELOCATE FROM				EXISTING ROOM COUNT																
BLDG	FLOOR	SQ.FT.	COLOR	DEPT	BLDG	FLOOR	SQ.FT.	RECEPT.	OFFICES	CUBICLES	WORK STATION (OPEN)	CONFR. ROOM	COMPUTER LAB	CLASS ROOMS	LABS.	TESTING RM.	HUDDLE RM.	BRK. RM	STOR.	COPY AREA	LOUNGE	STUDY ZONE	LOCKER AREA	GALLERY
OMB	03	4,959		STUDENT SUCCESS & STUDENT LIFE	OMB	06	1604	1	6	-	-	-	-	-	-	-	-	1	1	1	-	-	-	-

UHD University of Houston
DOWNTOWN

SPACE PROGRAMMING

OBJECTIVE:

UHD WILL UTILIZE THE STATE FOR THE CAPITAL CONSTRUCTION ASSISTANCE PROJECTS TO BUILD THE 4TH FLOOR OF THE WELCOME CENTER, RENOVATE 3RD FLOOR OF THE WELCOME CENTER, AND RENOVATE SPACES WITHIN THE ONE MAIN BUILDING TO ADDRESS PROGRAMMING PROBLEMS.

THE WELCOME CENTER WOULD BECOME THE NEW HOME OF STUDENT SUPPORT/SUCCESS PROGRAMS AND SERVICES, INCLUDING REGISTRAR, FINANCIAL AID, CASHIER, ENROLLMENT MANAGEMENT, TRANSFER RELATIONS, STUDENT ACCOUNTING, AND LARGE SEMINAR ROOMS. THE BUILD-OUT OF THE WELCOME CENTER WOULD ALSO ENHANCE CAMPUS SAFETY/SECURITY BY CONTAINING EVENING AND WEEKEND ACTIVITY IN THE MORE CONTROLLED SPACE OF THE GIRARD STREET BUILDING. THE PROJECT WILL ENCOMPASS 33,832 SQ/FT OF NEW SPACE AND RENOVATION OF 9,000 SQ/FT OF THE 3RD FLOOR OF THE WELCOME CENTER. THIS PROJECT WILL ALSO RENOVATE 64,843 SQ/FT OF SPACE IN THE ONE MAIN BUILDING.

SCOPE:

STUDENT SUCCESS & STUDENT LIFE SUITE RELOCATION

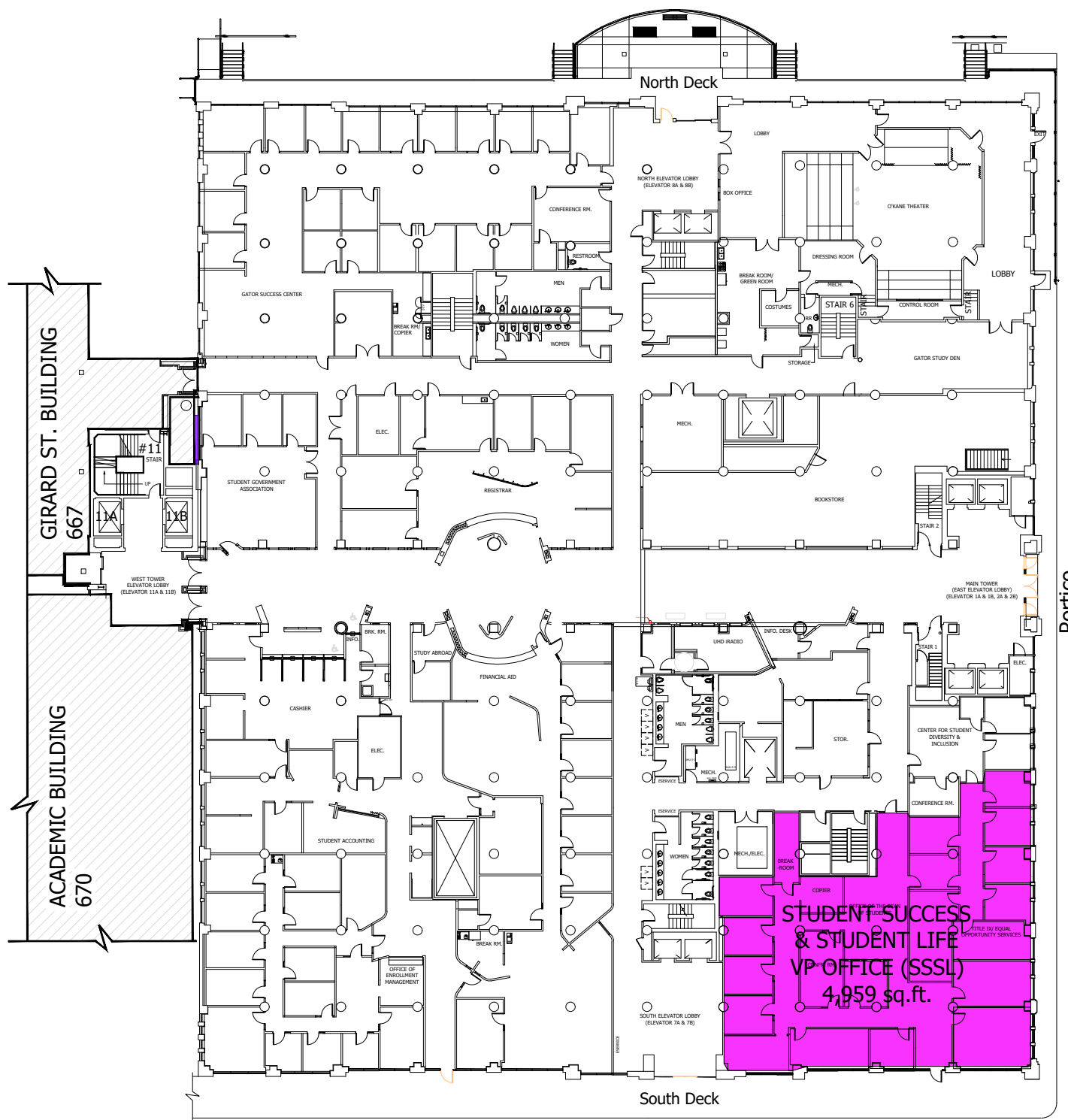
WILL BE TO BUILDOUT SOUTH 3RD FLOOR OF THE ONE MAIN BUILDING FOR STUDENT SUCCESS & STUDENT LIFE (SSSL). THIS WILL INCLUDE THE DEAN OF STUDENTS AREA. THE SSSL SIDE WILL CONSIST OF SIX OFFICES, ONE (1) EXECUTIVE OFFICE, FIVE (5) OFFICE 120 SF PRIVATE AND ONE (1) STORAGE ROOM. THE DEAN OF STUDENT SIDE WILL CONSIST OF TWELVE OFFICES (12), ELEVEN (11) OFFICE 120 SF PRIVATE, AND ONE (1) EXECUTIVE OFFICE, ONE (1) CONFERENCE ROOM 8 TO 15, ONE (1) LOUNGE 4 TO 8 /COPIER AREA AND ONE (1) STORAGE ROOM.



ONE MAIN BUILDING | FLOOR: 06



01 EXISTING LAYOUT
SCALE: NTS



02 PROPOSED LAYOUT - OMB 03 FL
SCALE: NTS

PROJECT NAME:
ONE MAIN COMPLEX PROGRAMMING (PHASE 8)

DRAWN BY: T.H.
REVIEWED: O.O.J.
START DATE: 2022
LAST UPDATED: 5/11/2023

BUILDING/FLOOR:
OMB/06 TO OMB/03

SHEET:
PHASE 8

Phase Eight

Will be to buildout South 3rd floor of the one main building for Student Success & Student Life (SSSL). This will include the Dean of Students area. The SSSL side will consist of six offices, one (1) **Executive Office**, five (5) **Office 120 SF Private** and one (1) **storage room**. The Dean of Student side will consist of twelve offices (12), eleven (11) **Office 120 SF Private**, and one (1) **Executive Office**, one (1) **Conference room 8 to 15**, one (1) **Lounge 4 to 8** /copier area and one (1) **storage room**.