

--- [Classroom Management] ---

Using the Insight Console

The Insight console is a classroom management tool that allows instructors to blank or view student screens and much more from the convenience of the instructor workstation.

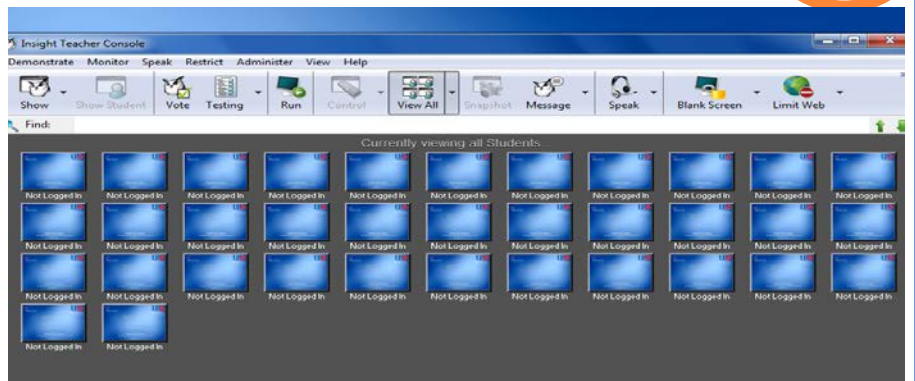
Upon logging in, instructors will see a **notification message** reminding them Insight is running in the background.

To open the **Insight Console**, double click the Insight icon that appears in the system tray.

Or right click the Insight notification message.

Once the console is open you will be able to see each student's computer.

To **enlarge** the view of a particular computer, double click the thumbnail of that computer.



Key Features of Insight Toolbar



Blank Screens

Blank all or selected student screens, student keyboards and mouse devices.

Change the text that appears on the student screens when they are blanked by clicking on the **Options** button in the Teacher tab.

This command is also available in the **Restrict** menu.



Limit Web

Temporarily disable all or selected student access to the internet.

Block all web browsing-

Prevents students from accessing any Web site through any browser.

Allow or block the following web sites –

Allows the instructor to specify lists of Web sites the students are allowed to, or prohibited from visiting.



Limit Apps

Temporarily disable all or selected student access to specified software applications.

This must be configured in the **Options** dialog and then turned on by clicking the **Limit Applications** button or through the **Restrict** menu.








More on back



--- [Classroom Management] ---

Using the Insight Console

The Insight Toolbar

 <p>Show Teacher's Screen Full Screen or Windowed</p>	<p>Select between a full screen or a windowed show mode. In full screen mode, the teacher's screen takes over the entire student's screen and disables each student's mouse and keyboard.</p> <p>In Windowed mode, the teacher's screen appears in a window on the student's machine. The students can re size the window and follow along with the teacher.</p>
 <p>Show a Student's Screen</p>	<p>To show a student's screen to other students select that student and click the Show Student button. While the button is enabled, the selected student controls their machine and their screen will be shown to rest of the students in the class.</p>
 <p>Student Voting</p>	<p>Ask yes/no and multiple choice questions from the Insight console and view in real-time how many students have responded and how they responded.</p>
 <p>Co-Browse</p>	<p>Teachers can launch the browser, go to a web site and the same website is displayed on the Student computer. To activate Co-Browse, click Demonstrate>Co-Browse the Internet. Launch the browser on the Teacher console and go to a website. A browser is automatically launched on the Student computer and the same website is displayed.</p>
 <p>Run Program</p>	<p>Use this feature to run an application or a Web site on student computers. This can be quite useful for younger students who have trouble navigating to a specific web address or starting a specific application.</p>
 <p>View All (Monitoring)</p>	<p>View up to 256 student machines at the same time. Every student's screen will appear as a thumb-nail in the Insight console.</p>
 <p>Send a Message</p>	<p>Send a message to any or all students. This is often an effective way to get a distracted student back on task.</p>

Helpful Tips

Implicit All Selection

If no students are selected and the teacher clicks the blank screens toolbar button, all of the student screens are blanked.

Sorting

By default, the detail view is sorted alphabetically by the Login Name column. Click on any of the other column headings and the list will re-order alphabetically on the selected column.

For more in depth training try the Teacher Quick Start Guide at

http://www.faronics.com/assets/INS_Teacher_Quickstart.pdf or this tutorial video

<http://www.faronics.com/document-library/document/faronics-insight-tutorial/>

Need More Help? – contact the Help Desk at 713-221-8031 (x3000) or email help@uhd.edu.