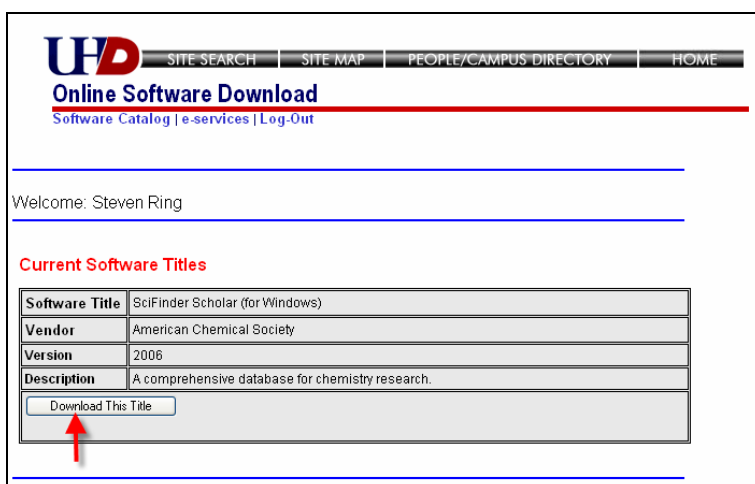
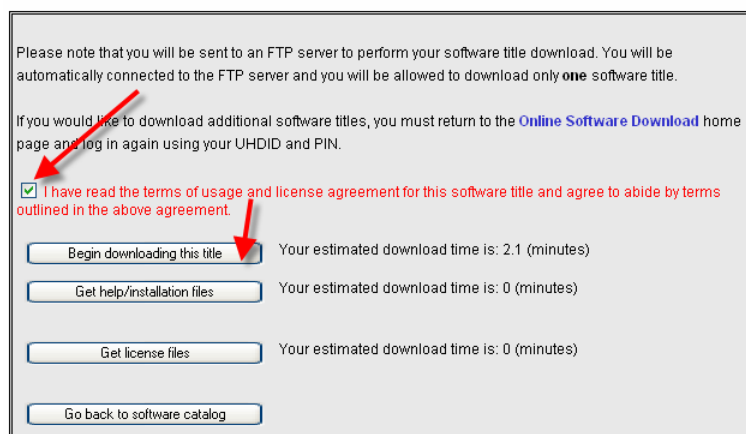


## SciFinder Scholar 2006 - Installation Instructions for Windows

1. Close all open programs before you begin.
2. SciFinder Scholar only works on computers that are part of the UHD campus network. Before you invest the time to download the software, make sure your computer has one of the following connections: (a) a direct network cable; (b) a wireless connection using UHWireless; or (c) an off-campus connection using the UHD VPN client software. For complete details about option (b) and option (c), please see <http://uhdwireless.uhd.edu/>.
3. Choose [faculty/staff e-services](http://www.uhd.edu) or [student e-services](http://www.uhd.edu) at <http://www.uhd.edu>.
4. Choose the [Software Download](#) link at the bottom of the e-services page.
5. Find **SciFinder Scholar (for Windows)** and click [Download This Title](#).



6. Accept the terms of usage and click on the [Begin downloading this title](#) button.



7. When asked **Do you want to open or save this file?**, choose [Save](#).

## SciFinder Scholar 2006 - Installation Instructions for Windows

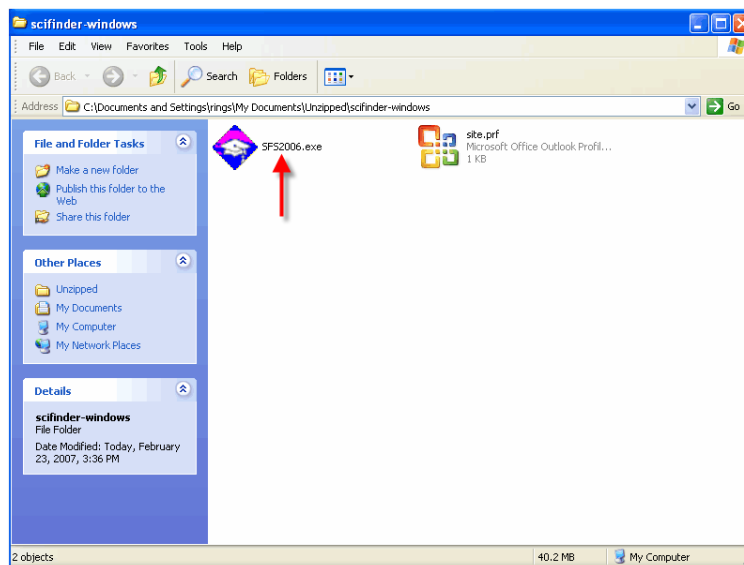
8. Save the file to your desktop. Do not change the file name or extension.

**Technical Note:** This is a very large file, so downloading may take several minutes. If you are using a laptop computer with a UHWireless connection, your connection may time out before the file can download. This problem is less likely to occur in an area with a very strong wireless signal, such as one of the campus computer labs.

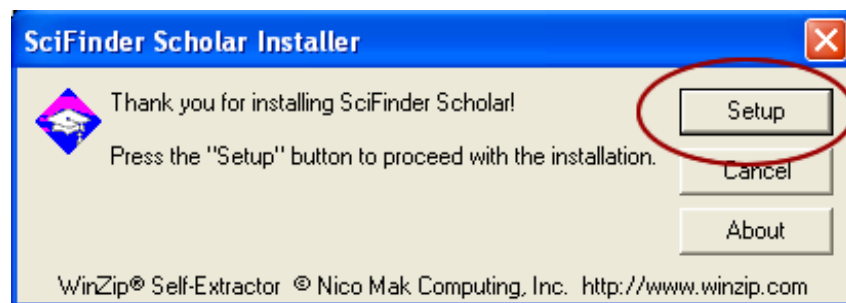
9. When downloading is complete, choose **Open** to start the unzipping process. Then choose **Next** at each prompt until the file is unzipped. Accept all of the default options.

10. A folder should open on your desktop with two files: **SFS2006.exe** and **site.prf**. If you do not see this folder, look in **My Documents > Unzipped > scifinder-windows**.

11. Double-click on the **SFS2006.exe** file icon.



12. You will see the SciFinder Scholar Installer window. Click on the **Setup** button:



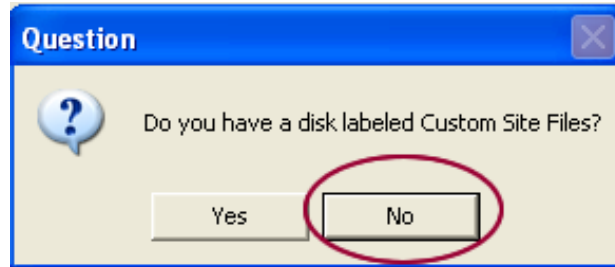
13. Follow the instructions on your screen.

## SciFinder Scholar 2006 - Installation Instructions for Windows

14. You will be asked to choose a folder name. Use the default folder **C:\SFSCHLR**.

15. You will be asked to choose a type of installation. Choose the **Typical** installation.

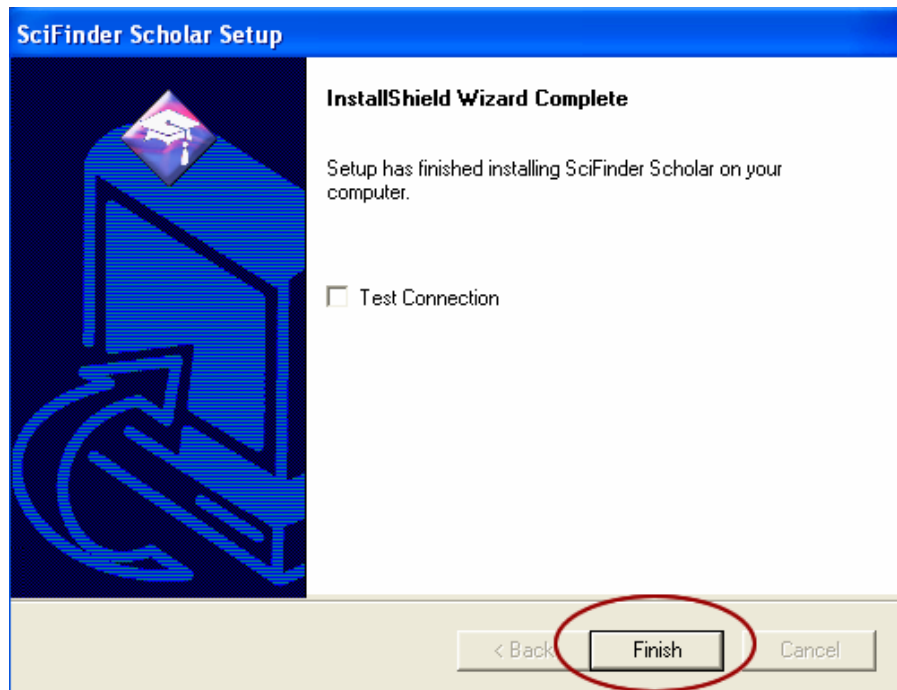
16. You will be asked **Do you have a disk labeled Custom Site Files?** Answer **NO**.



17. You will be asked to **Select Folder for Icons**. Choose **SciFinder Scholar 2006**.

18. You will be asked **Do you want to install SciFinder Scholar Toolbar?** This extra software is optional. If you answer yes, a toolbar menu will be added to Internet Explorer.

19. Click on the **Finish** button. **DO NOT choose Test Connection** (it won't work):



20. When the installation is complete, close the folder named **SciFinder Scholar 2006**.

21. Click on the **Start** button and choose the **Search** option.

## SciFinder Scholar 2006 - Installation Instructions for Windows

22. Choose **All files and folders**.
23. Type **site.prf** in the **All or part of the file name** box.
24. Click on the **Search** button.
25. In the results box, click on file named **site.prf**. There may be two versions of this file. You can pick either one. Then choose **Copy** from the **Edit** menu.
26. Click on the **Start** button again.
27. Click on **My Computer**.
28. Click on **C:\**
29. Click on the **SF SCHLR** folder.
30. Click on **Edit** and choose **Paste**
31. You are now finished. To test your connection to SciFinder Scholar, click on the **Start** menu, choose **All Programs**, and then click on the **SciFinder Scholar** icon.

**Please note:** If you are connecting from home or another off-campus location, you must run the **VPN Client (Windows)** when you launch SciFinder Scholar. You can find the client at <http://uhdwireless.uhd.edu/>. VPN requires high speed Internet (DSL or cable).