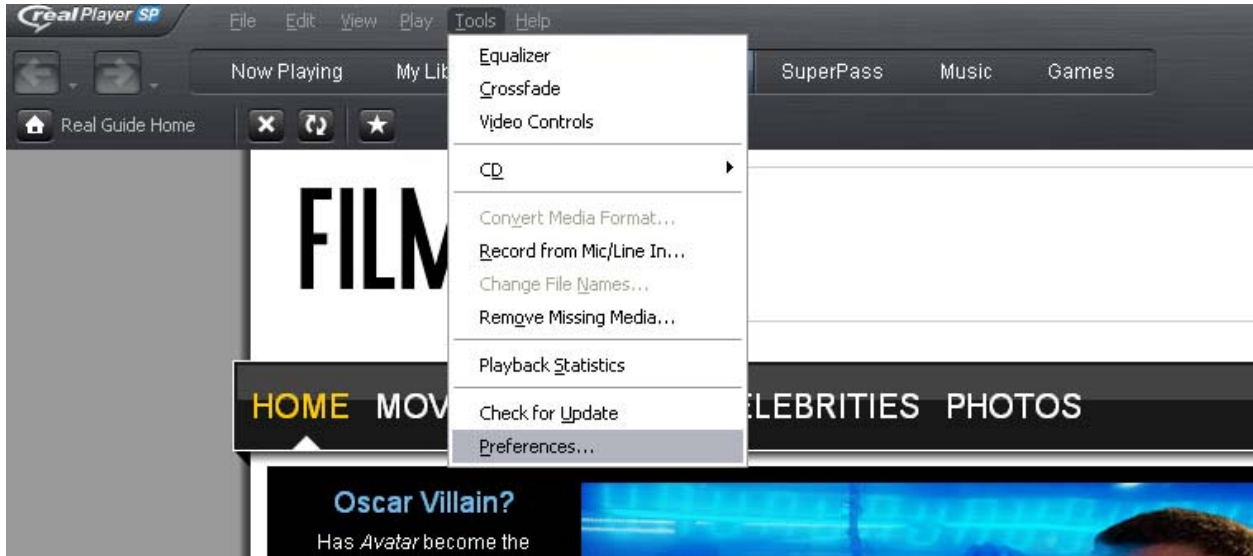


Real player Help

- 1) After downloading Real Player SP from www.real.com.

Here are the SP player settings

- 2) Under TOOLS --> select: Preferences -->



In the Preference pop-up menu select: Connection

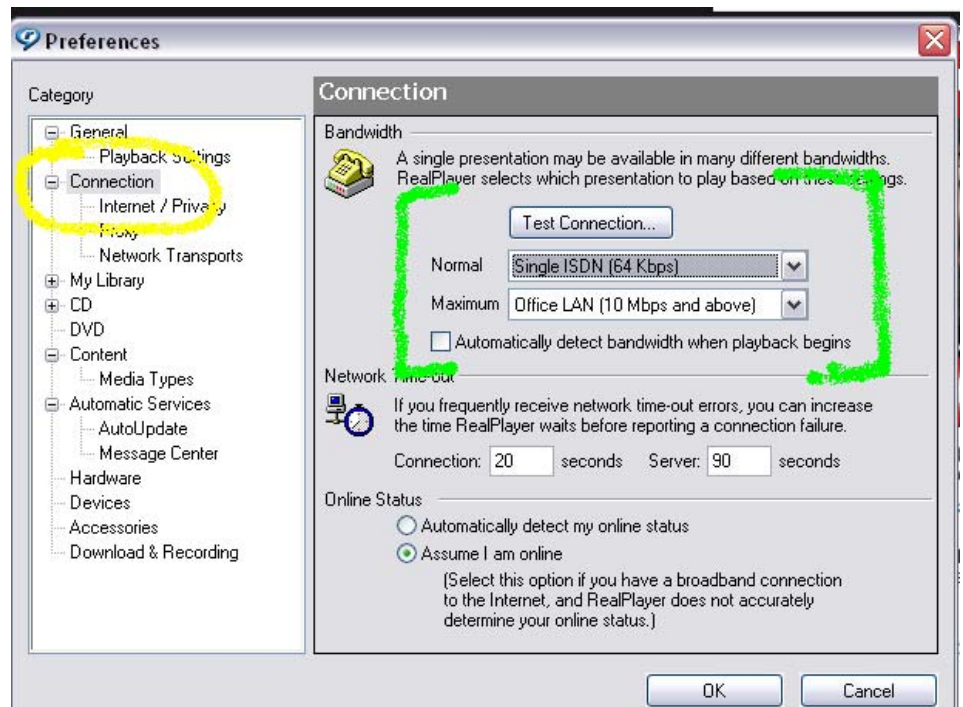
Under Bandwidth test you connection.

After testing make sure

- a) Set Normal to Dual ISDN 128kbps or greater

- b) Set Maximum to Office LAN

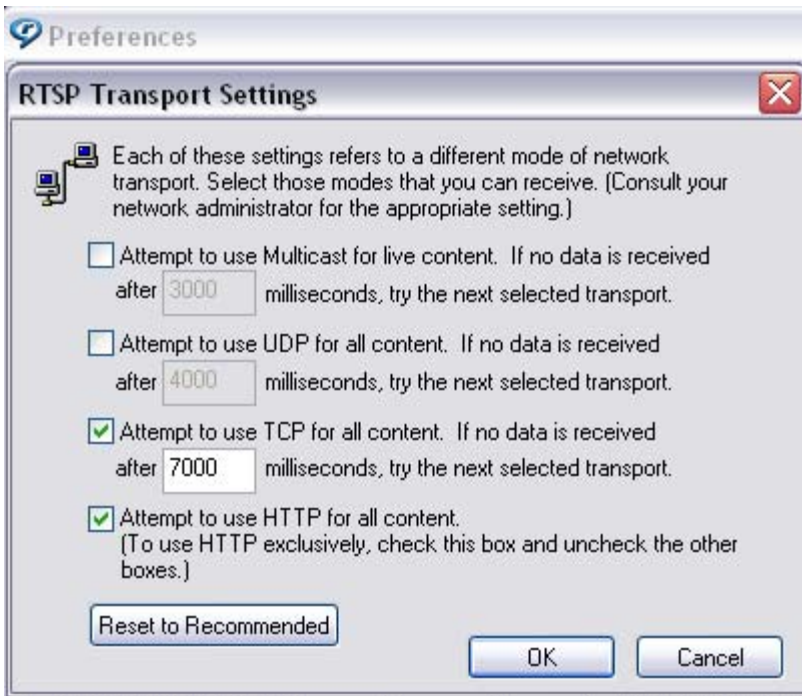
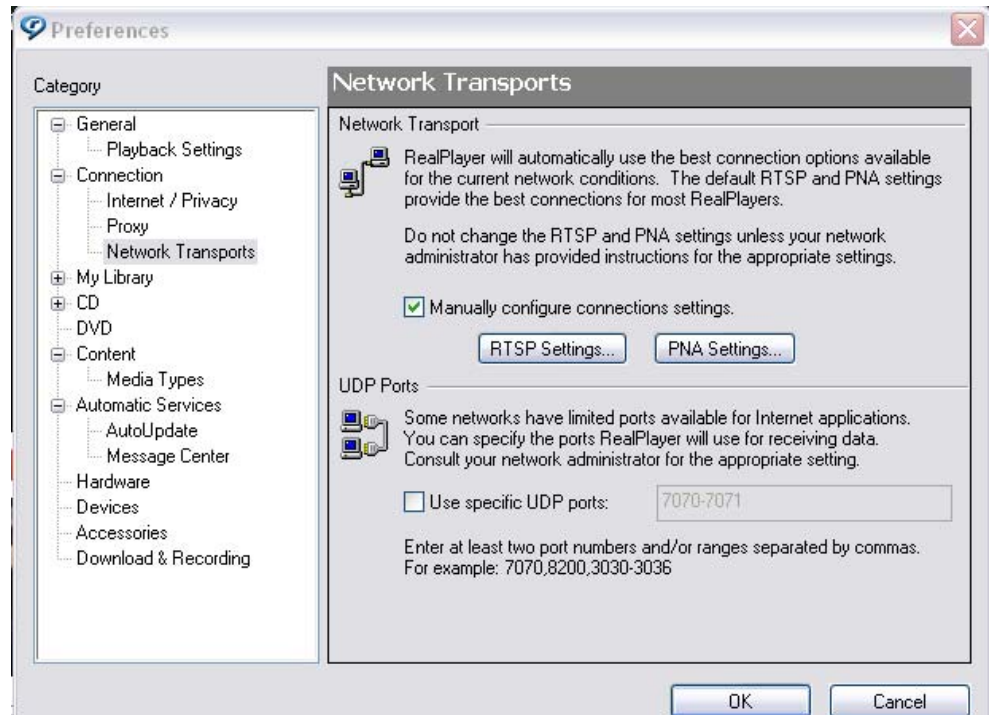
- c) Uncheck "Automatically detect bandwidth" when playback begins



4) Under TOOLS --> select: Preferences --> Connection --> Network Transports -->

a) Check manually configure settings

b) Click on RTSP settings



c) Uncheck Multicast

d) Uncheck UDP

e) Check TCP -- Set to 7000

f) Check HTTP

g) Click on PNA settings and repeat

