

Remote Desktop Connection

Remote Desktop Connection allows you to connect to your UHD PC and access all the programs, resources, and accessories installed on it from a remote computer.

Important Note:

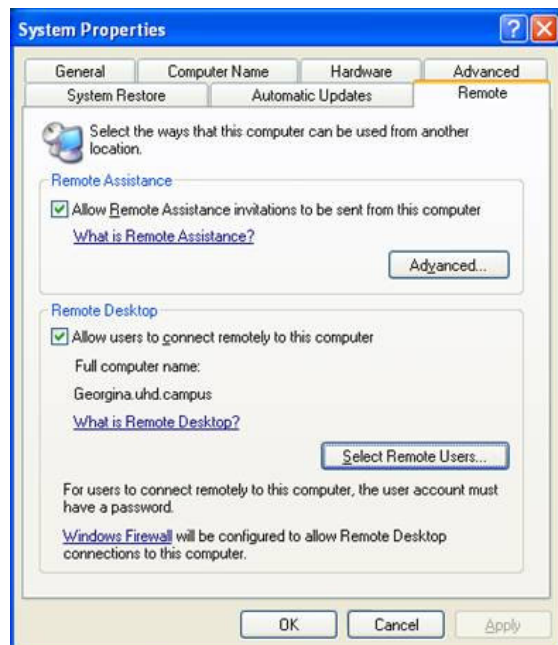
- You must configure your UHD PC for *Remote Desktop Connection* (see below).
- Make sure your UHD PC is on when you try to connect to it remotely.
- Broadband connection (high speed such as DLS or Cable Modem) is highly recommended for your remote PC to use *Remote Desktop Connection* vs. PPP/Dial-Up.
- VPN Client for Windows is required on the remote PC to use *Remote Desktop Connection*. Before using *Remote Desktop Connection* from a remote PC, you need to find out the name of your UHD PC.

What is my UHD PC Name?

To find out the name of your UHD PC (or host), right click on "My Computer" icon on the desktop and select properties. Click on "Computer Name" tab, and make a note of the PC name in the "Full computer name" field. You don't have to copy ".uhd.campus" after the PC name

How to prepare/configure your UHD PC (Windows XP Professional) for *Remote Desktop Connection*

1. Right-click "My Computer" icon on your desktop, and select "Properties".
2. Check "Allow users to connect remotely to this computer" option.



Note: The Terminal version of the remote desktop connection is available only in Windows XP Professional. If your PC on campus is still running Windows 2000 and you would like to access your files, you will be able to do so by sharing your c: drive from your PC on-campus and mapping to it from another PC. Please call the Help Desk at 713-221-8031 (or X3000) for help in sharing your PC and mapping to it from another PC.

How to connect to your UHD PC from another PC

In order to connect to your UHD PC from another PC, you need to use the client version of *Remote Desktop Connection* which is already part of Windows XP Professional and Windows XP Home Edition.

How Do I Launch Remote Desktop Client?

1. Go to Start > All Programs > Accessories > Communications > Remote Desktop Connection
2. Type in the host name or your UHD PC name in the "Computer" field and click Connect.



Sharing Your UHD PC Disk Drives

With remote desktop connection, you will be able to share and access drive C:, CD/DVD drives, network drives and floppy disk drive of your UHD PC from another PC.

1. Launch the Remote Desktop Client version from the remote PC (go to Start > All Programs > Accessories > Communications > Remote Desktop Connection).
2. Click the "options" tab.
3. From the Remote Desktop Connection dialog box, click the Local Resources tab, check Disk Drives.



4. When you click "connect" you will be prompted with the following security warning screen. Check *Don't prompt me again for connections to this remote computer* and click *OK*

Sharing Your Printer

By default, the printers are checked in the "local resources" option. This will allow for accessing local and network printers.